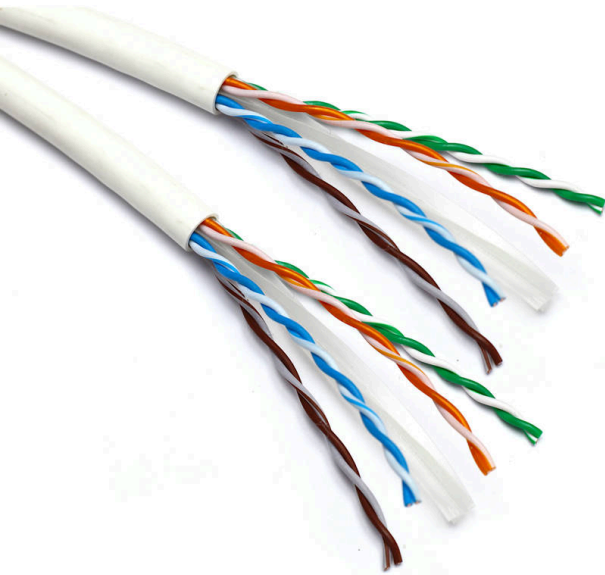


Excel Solid Cat6 Dual Cable U/UTP LSOH CPR
Euroclass Dca 500 m Reel White

Item Code: 100-103



- ✕ Dual Cat6 Copper Cable
- ✕ U/UTP No Overall Screening
- ✕ No Conductor Screening
- ✕ Outer sheath colour White
- ✕ Reaction-to-fire class according to EN 13501-6: Dca
- ✕ Smoke development class according to EN 13501-6: s2

Product Overview

Excel solid Dual Cat6 ethernet cable U/UTP LSOH CPR Euroclass Dca manufactured and tested to the TIA/EIA 568-B.2-1, EN50173-1 and ISO/ IEC 11801 Cat 6 specifications, 500m Reel. Each cable consists of 8 colour coded solid copper conductors twisted together to form four pairs.

These are then formed around a central X-shaped polyethylene centre with the whole cable produced in a LSOH sheath.

Product Specifications

Feature	Values
Conductor surface	Bare
AWG size	24
Conductor category	Class 1 = solid
Total number of cores	16
Stranding element	Pairs
Specification core insulation	Polyethylene (PE)
Core identification	Colour
Overall screening	None
Conductor screening	None
Outer sheath material	Copolymer, thermoplastic (LSOH)

Excel Solid Cat6 Dual Cable U/UTP LSOH CPR Euroclass Dca 500 m Reel White

Item Code: 100-103



Outer sheath colour	White
Flame retardant according to IEC 60332-1-2	yes
Reaction-to-fire class according to EN 13501-6	Dca
Smoke development class according to EN 13501-6	s2
Euro class flaming droplets/particles according to EN 13501-6	d2
Euro class acidity according to EN 13501-6	a1
Outer diameter approx.	12.02 mm
Installation Temperature Range	0...60 °C
Operating Temperature Range	-20...75 °C
Category	6
NVP value	69 %

Cable specifications

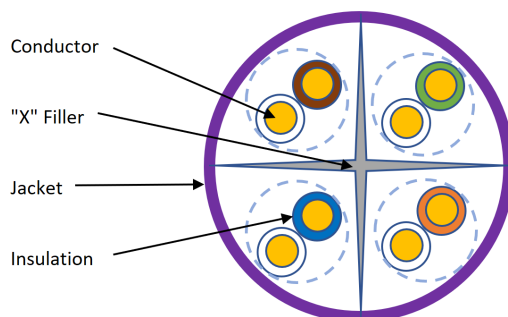
Features	Values
Dielectric strength	2.5kV for 2s
Maximum pulling load	60N/6.1KgF
MBR during installation	8x cable OD
MBR installed	4x cable OD

Excel Solid Cat6 Dual Cable U/UTP LSOH CPR Euroclass Dca 500 m Reel White

Item Code: 100-103



Cross-section diagram



Standards

Applicable standard	Subject
ISO/IEC 11801-1:2017	Information technology - Generic cabling for customer premises: Part 1 General Requirements
IEC 61156-5:2020	Multicore and symmetrical pair/quad cables for digital communications - Part 5: Symmetrical pair/quad cables with transmission characteristics up to 1 000 MHz - Horizontal floor wiring - Sectional specification
EN 50173-1:2018	Information technology. Generic cabling systems - General requirements
EN 50173-2:2018	Information technology. Generic cabling systems - Office premises
BS EN 50288-3-1:2013	Multi-element metallic cables used in analogue and digital communication and control. Sectional specification for unscreened cables characterised up to 250 MHz
EN 50399:2011+A1:2016	Common test methods for cables under fire conditions. Heat release and smoke production measurement on cables during flame spread test. Test apparatus, procedures, results
IEC 60332-1-2:2004 + A12:2020	Tests on electric and optical fibre cables under fire conditions. Test for vertical flame propagation for a single insulated wire or cable. Procedure for 1 kW pre-mixed flame
ANSI/TIA 568-D:2015	Balanced Twisted-Pair Telecommunications Cabling and Components Standards
IEC 60754-2:2014	Test on gases evolved during combustion of materials from cables - Part 2: Determination of acidity (by pH

Excel Solid Cat6 Dual Cable U/UTP LSOH CPR Euroclass Dca 500 m Reel White

Item Code: 100-103



measurement) and conductivity

IEC 61034-2:2005+A2:2020

Measurement of smoke density of cables burning under defined conditions – Part 2: Test procedure and requirements

EN 50575:2014 + A1:2016

Power, control and communication cables — Cables for general applications in construction works subject to reaction to fire requirements

RoHS-II/-III (2011/65/EU & 2015/863): 2023

Our products, demonstrate full adherence to the regulatory stipulations of the EU Directive 2011/65/EU (RoHS-II) and its corresponding delegated directive 2015/863 (RoHS-III).

WFD: 2023

Compliant to Waste Framework Directive

SCIP: 2023

Compliant - Does Not Contain Substances of Concern In articles as such or in complex objects (Products)

POPs (EU) No 2019/1021

EU Regulation for the restriction of Persistent Organic Pollutants.

Part Number Table

Part Number	Description
100-071	Excel Solid Cat6 Cable U/UTP LSOH CPR Euroclass Dca 305 m Box Violet
100-071-1000M	Excel Solid Cat6 Cable U/UTP LSOH CPR Euroclass Dca 1000 m Reel Violet
100-071-500M	Excel Solid Cat6 Cable U/UTP LSOH CPR Euroclass Dca 500 m Reel Violet
100-072	Excel Solid Cat6 Cable U/UTP LSOH CPR Euroclass Dca 305 m Box Green
100-074	Excel Solid Cat6 Cable U/UTP LSOH CPR Euroclass Dca 305 m Box White
100-074-1000M	Excel Solid Cat6 Cable U/UTP LSOH CPR Euroclass Dca 1000 m Reel White
100-074-500M	Excel Solid Cat6 Cable U/UTP LSOH CPR Euroclass Dca 500 m Reel White
100-075	Excel Solid Cat6 Cable U/UTP LSOH CPR Euroclass Dca 305 m Box Orange
100-103	Excel Solid Cat6 Dual Cable U/UTP LSOH CPR Euroclass Dca 500 m Reel White

Excel is a world class premium performing end to end infrastructure solution designed, Manufactured, supported and delivered without compromise.

Contact us at sales@excel-networking.com



E&OE. Excel is a registered trade name of Mayflex Holdings Ltd.