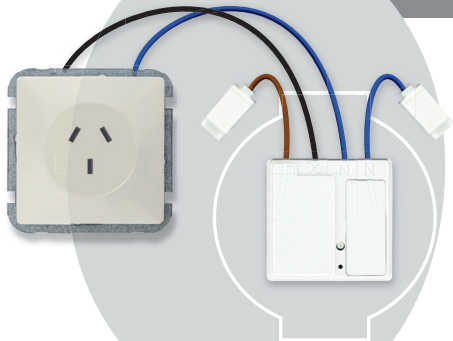




www.trust.com



USER MANUAL



Item 75100 Version 1.0
Visit www.trust.com
for the latest instructions

MINI BUILD-IN SWITCH

AWS-3500 MINI BUILD-IN SWITCH

Read these simple guidelines. Not following them may be dangerous and faulty installation will invalidate any warranty that may apply to this product.

FUNCTIONALITY

This mini build-in switch can be installed behind a wall socket, to switch lighting and electrical devices up to 3500 Watts (resistive load) on/off wirelessly.

COMPATIBILITY

The receiver works with all Trust SmartHome transmitters.

TECHNICAL SPECIFICATIONS RECEIVER

Power supply input	220-240 VAC 50 Hz
RF frequency	433,92 MHz
RF range	Up to 30m indoor, 70m outdoor (optimal conditions)
Memory addresses	6

GOOD TO KNOW

- When there is a power cut, the code of the Trust SmartHome transmitter will still be stored in the memory of the receiver. As soon as power is restored, the receiver will switch off automatically. Use your transmitter to switch the light or electrical device back on again.
- The AWS-3500 is designed to be installed behind an existing wall socket. In most cases there will be sufficient space to install this receiver. This depends on the type and size of the junction box and the type of the wall socket. Should there be insufficient space for easy and correct installation, then we recommend a deeper junction box or to use a wall socket which has sufficient space for easy and correct connection. When in doubt, always consult a qualified electrician.
- Connect no more than 1 transformer for each receiver

WIRELESS RADIO SIGNAL

- The 433.92 MHz radio signal passes through walls, windows and doors.
- Indoor range: up to 30 m. Outdoor range: up to 70 m. (optimal conditions)
- The range is strongly dependent on local conditions, such as the presence of metals. For example, the thin metal coating in Low-emissivity (Low-E) glass has a negative impact on the range of radio signals.
- There may be restrictions on the use of this device outside the EU. If applicable, check whether this device complies with local directives.

MAXIMUM LOAD

Never connect lights or equipment that exceed the maximum load of the receiver, as it can result in defects, a short circuit or fire.

SHOCK HAZARD

Exercise caution when installing a receiver. Voltage may be present, even when a receiver is switched off.

LIFE-SUPPORT

Never use TRUST SMART Home products for life-support systems or other applications in which equipment malfunctions can have life-threatening consequences.

INTERFERENCE

All wireless devices may be subject to interference, which could affect performance. The minimum distance between 2 receivers should be at least 50 cm.

REPAIRING

Do not attempt to repair this product. There are no user-serviceable parts inside.

WATER-RESISTANCE

This product is not water-resistant. Keep it dry. Moisture will corrode the inner electronics and can result in a short circuit, defects and shock hazard.

CLEANING

Use a dry cloth to clean this product. Do not use harsh chemicals, cleaning solvents, or strong detergents.

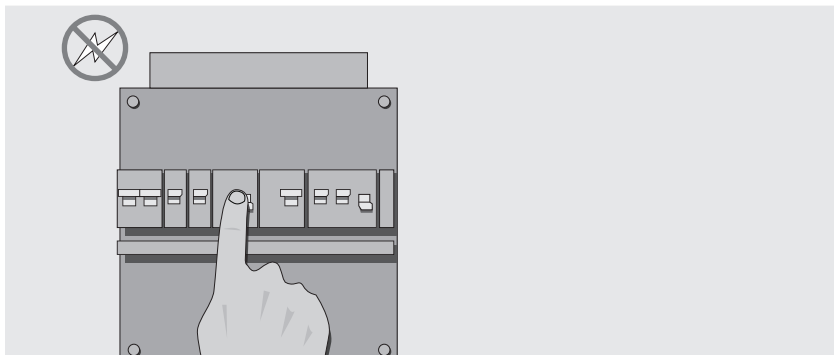
HANDLING

Do not drop, knock, or shake the device. Rough handling can break internal circuit boards and fine mechanics.

ENVIRONMENT

Do not expose the product to excessive heat or cold, as it can damage or shorten the life of electronic circuit boards.

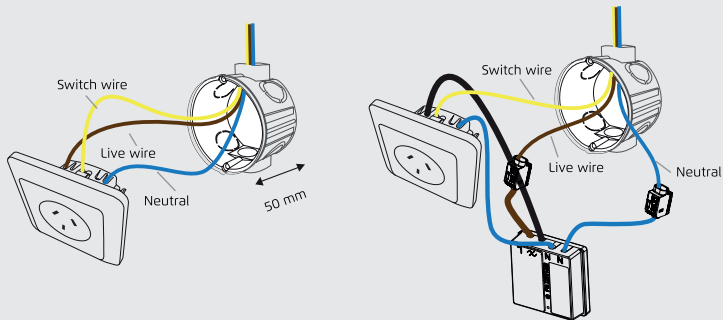
AWS-3500 MINI BUILD-IN SWITCH



1. Switch of mains power

Switch off the mains power (electric meter box) before installing this product.

AWS-3500 MINI BUILD-IN SWITCH



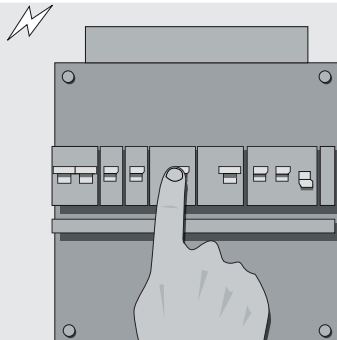
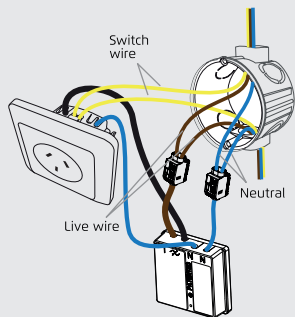
2. Detach the wall socket

Detach the wall socket and note where the wires are connected (Tip: You can also take a picture). Contact an electrician when in doubt about wiring.

3. Connect the wiring

Remove the wires from the wall socket and connect them as shown in the illustration. First connect the live wire to the clamp that is connected to [L]. Then connect the neutral wire to the clamp that is connected to [N]. Now connect the black wire of the AWS-3500 to the wall socket. Use the outlet to which the live wire was connected. Connect the blue wire of the AWS-3500 to the outlet to which the neutral wire was connected. If it is a grounded outlet, the earth wire can be connected directly to the wall socket.

AWS-3500 MINI BUILD-IN SWITCH



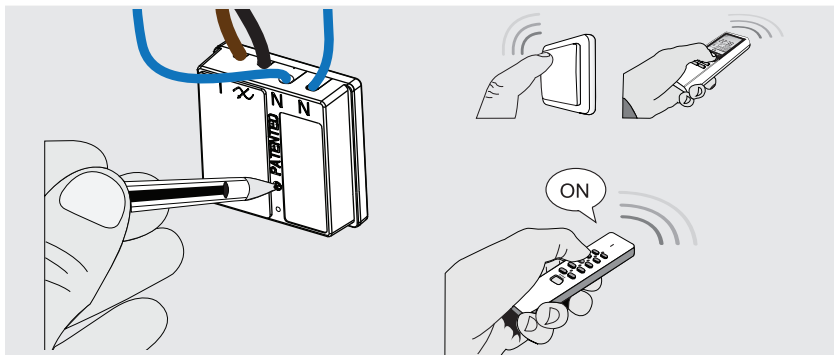
4. Looping the wiring

When the wires need to be looped, for example to another wall socket, install the wires as shown in the illustration. Again, connect the live wire to the clamp that is connected to [L] and the neutral wire to the clamp that is connected to [N]. If it is a grounded outlet, the earth wire can be looped through the wall socket.

5. Switch on mains power

Switch on the mains power (electric meter box) to continue the installation. Shock hazard! Do not touch any exposed wiring. The LED-indicator will blink slowly for 10 seconds to indicate correct installation.

AWS-3500 MINI BUILD-IN SWITCH



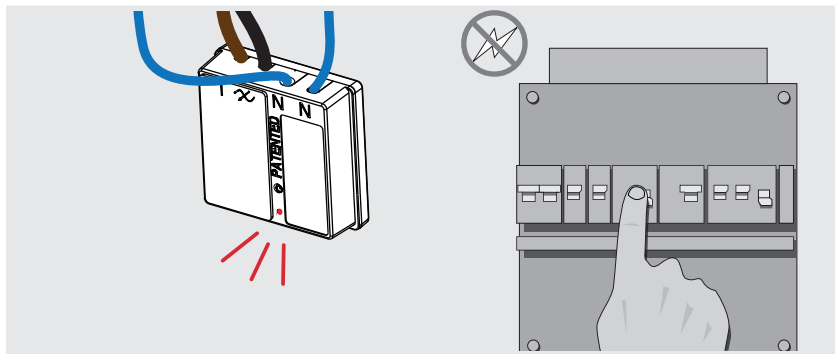
6. Activate learn-mode

Press the learn-button on the receiver for 1 second. The learn-mode will be active for 12 seconds and the LED-indicator will blink slowly.

7. Assign transmitter code

While the learn-mode is active, send an ON-signal with any Trust SmartHome transmitter to assign the code to the receiver's memory.

AWS-3500 MINI BUILD-IN SWITCH



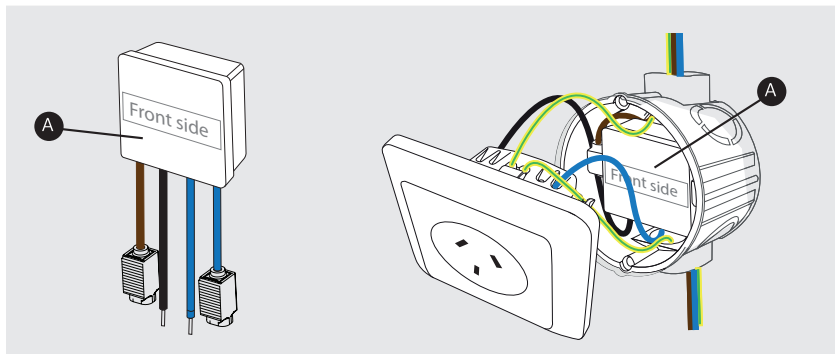
8. Code confirmation

The receiver will slowly blink 2 times to confirm the code has been received. The receiver can store up to 6 different transmission codes in its memory. The memory will be preserved when the receiver is moved to another location or in case of power failure.

9. Switch off mains power

Switch off the mains power (electric meter box).

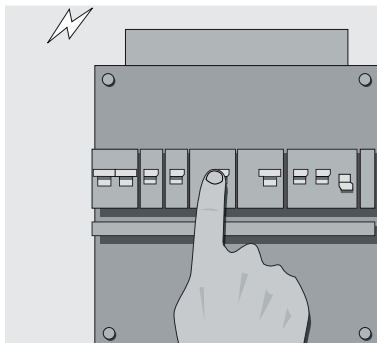
AWS-3500 MINI BUILD-IN SWITCH



10. Mount the receiver in the box

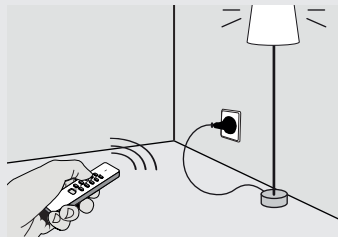
A = front side

AWS-3500 MINI BUILD-IN SWITCH



11. Switch on mains power

Switch on the mains power (electric meter box) to continue the installation



12. Manual operation with transmitter

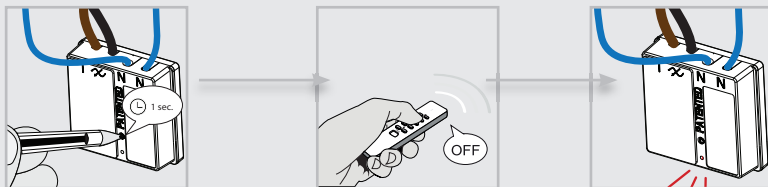
- Press ON to switch the receiver on
- Press OFF to switch the receiver off

AWS-3500 MINI BUILD-IN SWITCH



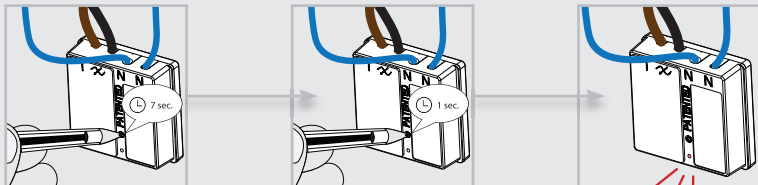
TIP: Mark your wireless wall socket

AWS-3500 MINI BUILD-IN SWITCH



Single code delete

- (1) Press the learn-button for 1 second. The learn-mode will be active for 12 seconds and the LED-indicator will blink slowly.
- (2) While the learn-mode is active, send an OFF-signal with a specific Trust SmartHome transmitter to delete that code.
- (3) The receiver will slowly blink 2 times to confirm code deletion.



Full memory delete

- (1) Press and hold the learn-button on the receiver (approx. 7 sec.) until the LED-indicator starts blinking fast. The delete mode will be active for 15 seconds.
- (2) While the delete mode is active, press the learn-button again for 1 second.
- (3) The receiver will slowly blink 2 times to confirm memory deletion.

AWS-3500 MINI BUILD-IN SWITCH

CE Trust SmartHome declares that this product is in compliance with the essential requirements and other relevant provisions of Directive 1999/5/EC (R&TTE).



If possible, dispose of this product at a recycling center. Do not dispose of this product with the household waste.

Warranty

This product is covered by the legal warranty that applies to your country and it begins on the day of purchase. For additional information, visit: www.trust.com/warranty/

Copyright

The contents of the "Important Information" and "Quick Installation Guide" are subject to copyright protection. Without prior written permission, reproducing or copying is prohibited. Information in these documents is subject to change without prior notice. Check www.trust.com for updates.

Declaration of conformity

Trust International B.V. declares that the Trust SmartHome product:

model:	AWS-3500 MINI BUILD-IN SWITCH
item number:	75100
intended use:	Indoor

is in compliance with the essential requirements and other relevant provisions of the following directives: EMC Directive, Low Voltage Directive and R&TTE Directive.

The product is compatible with the following norms/standards:

EN 60669-2-1:2004 +A1:2009 + A12:2010	EN 61000-3-3: 2008
EN 60669-2-2:2006	EN 55022:2010+AC:2011
EN 60669-1:1999 + A1:2002 + A2:2008	EN 61000-4-2: 2009
EN 301 489-1 V1.9.2 (2011-09)	EN 61000-4-3: 2006 +A1: 2008 +A2: 2010
EN 301 489-3 V1.6.1 (2013-08)	EN 61000-4-4: 2012
EN 300 220-1 V2.4.1 (2012-05)	EN 61000-4-5: 2006
EN 300 220-2 V2.4.1 (2012-05)	EN 61000-4-6: 2009
EN 55015: 2006 +A1: 2007 +A2: 2009	EN 61000-4-11: 2004
EN 61000-3-2: 2006 +A1: 2009 +A2: 2009 Class A	

Manufacturer/Authorised representative,



H. Donker, Procurement Director
Dordrecht, 28 October 2014