

3D Model is the Master Document of Record
Article or Material Must Conform to REACH Procedure S19000000 Sec.14
Article or Material Must Conform to RoHS Procedure S19000000 Sec.13
Part Must Conform to S19000000 Sec.4 Toxicity Procedure
Geometric Dimensioning & Tolerancing as per ASME Y14.5-2009

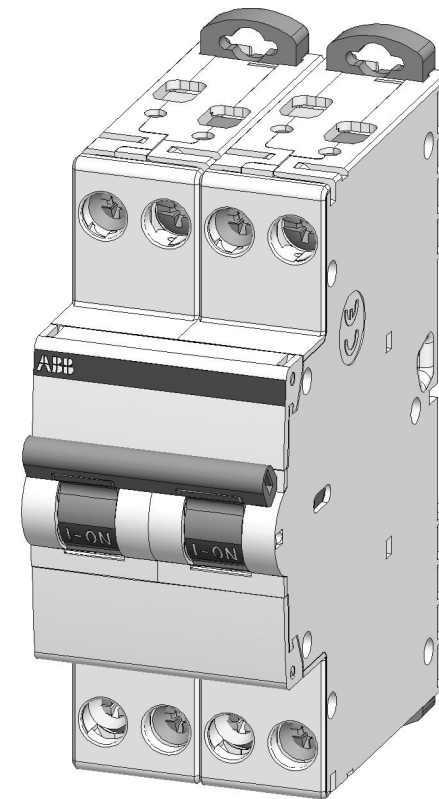
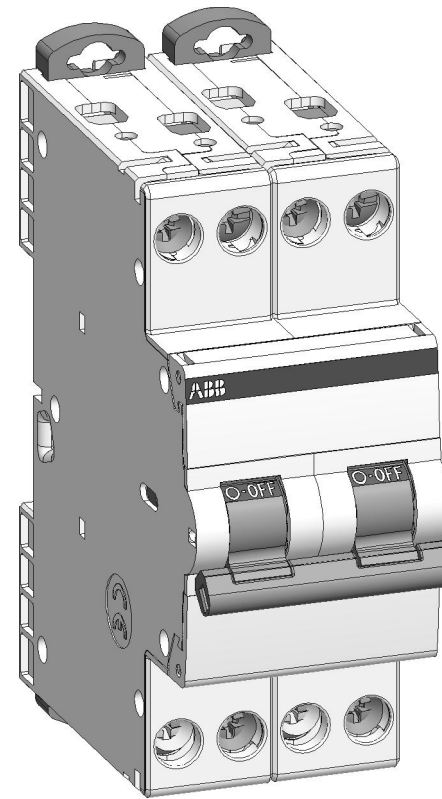
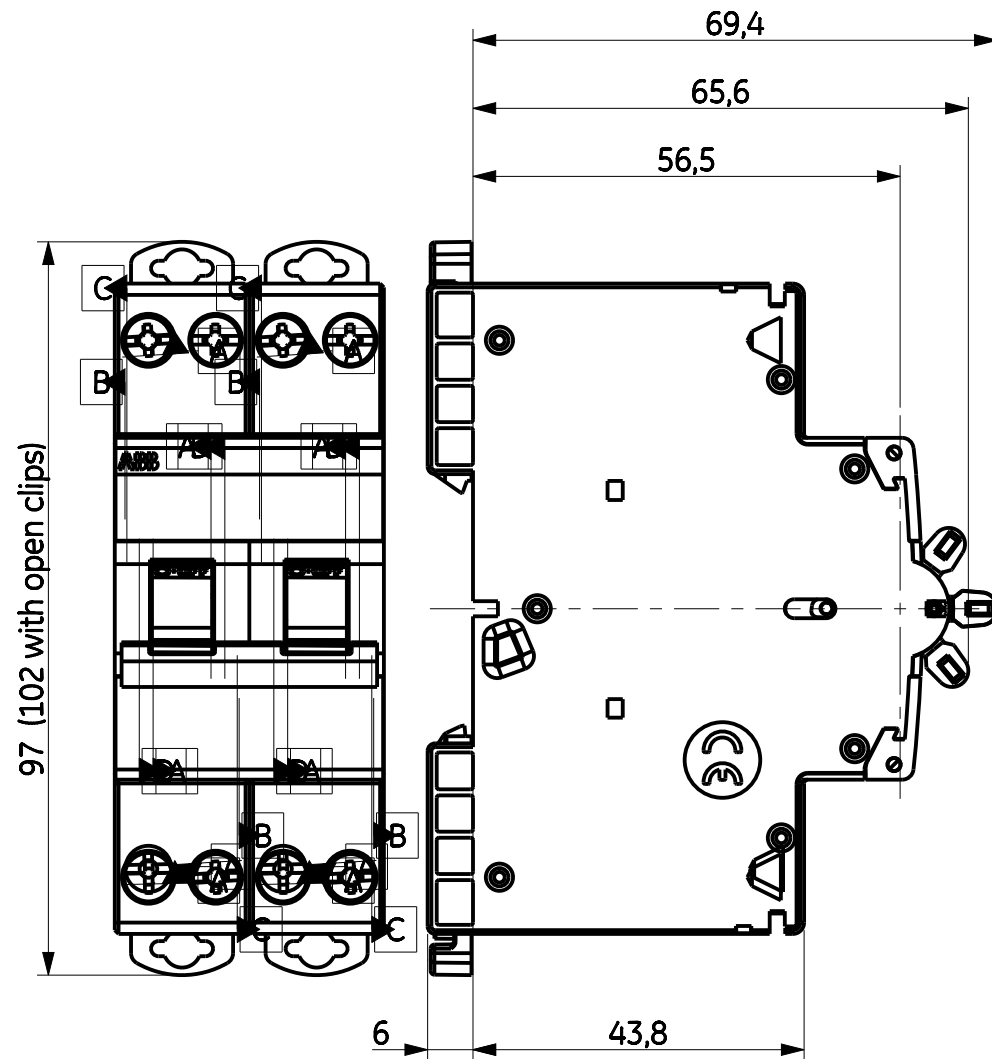
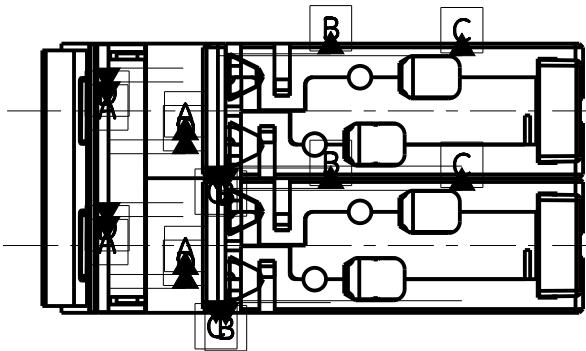
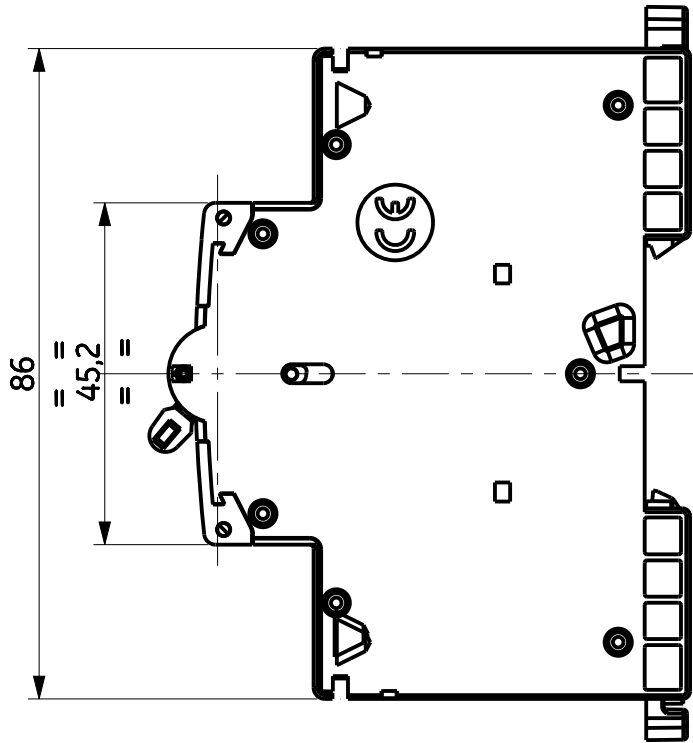
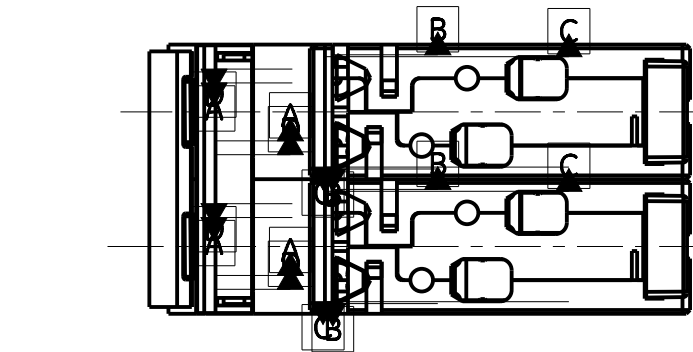
ABB PROPRIETARY AND CONFIDENTIAL INFORMATION
The information contained in the document has to be kept strictly confidential.
Any unauthorized use, reproduction, distribution or disclosure to third parties is strictly forbidden.
ABB reserves all rights regarding intellectual Property Rights.
Copyright 2018 ABB. All rights reserved

A

B

C

D



First Angle Projection



DRAWING FILE 2300279620A		MODEL FILE 2300279620A		<div>ABB</div>				
DATE MODIFIED 23-Sep-19 10:14:19 AM		DESIGNED BY J.C.Rodríguez						
CN# CN: C069937		APPROVED BY C069937		TITLE ABB-S202C M 4P (Assembly)				
Critical to Quality Characteristic								
MATERIAL SPECIFICATION		FINISH SPECIFICATION ---		UNITS mm	LOCAL TITLE ABB-S202C M 4P (Assembly)			
MATERIAL DESCRIPTION ---				SIZE A3	ROOT NUMBER 2300279620A		REV 1	RELEASE STATE In Work
FINISH DESCRIPTION ---				SCALE 1:1	PRODUCT LINE MCB-UNIBIS-MCB			SHEET 1 of 1