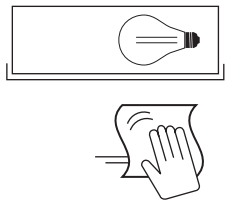
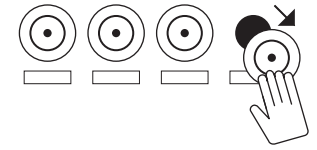
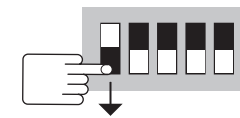
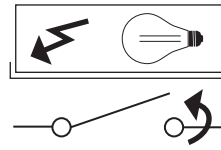


# Huolto- ja kierrätysohjeet

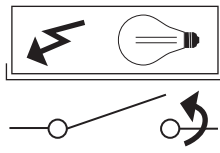
## Underhålls- och återvinningsinstruktioner

### Hooldus- ja utiliseerimisjuhend

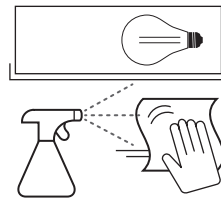
#### Maintenance and recycling instructions



1

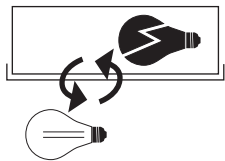
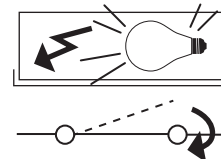


2

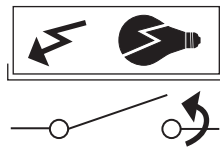


PH 6-8

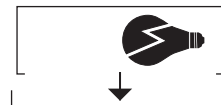
3



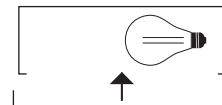
1



2



3



Odota, että valaisin on jäähtynyt.  
Väntä tills lampan har svalnat.  
Oodake, kuni valgusti on jahtunud.  
Wait until the luminaire has cooled down.

4

