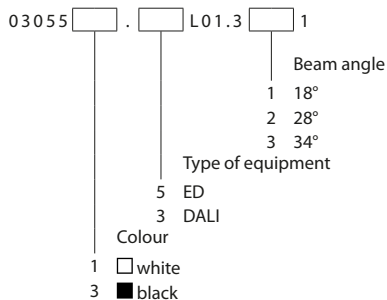


220-240V  
50/60 HzIK  
06IP  
20IP  
20/54

Decorative downlight luminaire, adapted for tool-free assembly, for suspended ceilings, for LED light sources. The luminaire in round version with different angles of light distribution.

**TECHNICAL DATA****Mounting:** in the ceiling, with mounting brackets (included)**Body:** aluminum**Colour:** white, black**ELECTRICAL DATA****Power:** 220-240V 50/60Hz**Includes light source:** yes**Type of equipment:** ED, DALI**OPTICAL DATA****Light distribution:** rotationally-symmetric**Way of lighting:** direct**Reflector:** polished faceted**GENERAL DATA****Lifetime (L80B10):** 60 000 h**Warranty:** 5 years**Application:** public utility facilities, delicatessen, supermarkets, shopping centers, offices, car showrooms, pathways, halls, classrooms, corridors, flats

Code	Luminaire power [W]	Lumen luminaire [lm]	Efficacy [lm/W]	Colour temperature [K]	CRI/Ra
<b>Type: IP20</b>					
03055X.XL01.3X1	14	1200	86	3000	≥80
03055X.XL02.3X1	14	1250	89	4000	≥80
03055X.XL03.3X1	21	1800	86	3000	≥80
03055X.XL04.3X1	21	1900	90	4000	≥80
03055X.XL01.3X3	14	1200	86	3000	≥80
03055X.XL02.3X3	14	1250	89	4000	≥80
03055X.XL03.3X3	21	1800	86	3000	≥80
03055X.XL04.3X3	21	1900	90	4000	≥80
<b>Type: IP20/54, IK06</b>					
03063X.5L01.3X1	14	1100	79	3000	≥80
03063X.5L02.3X1	14	1150	82	4000	≥80
03063X.5L03.3X1	21	1500	71	3000	≥80
03063X.5L04.3X1	21	1600	76	4000	≥80
03063X.5L01.3X3	14	1100	79	3000	≥80
03063X.5L02.3X3	14	1150	82	4000	≥80
03063X.5L03.3X3	21	1500	71	3000	≥80
03063X.5L04.3X3	21	1600	76	4000	≥80



Luminous flux tolerance +/- 10%.

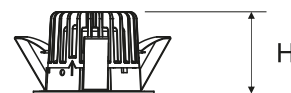
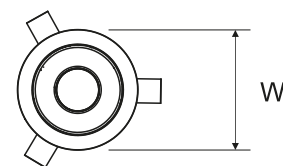
Power tolerance +/- 5%.

Up-to-date product info and General Warranty Terms available on our website [www.luglightfactory.com](http://www.luglightfactory.com)

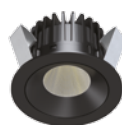
Detailed information on luminous fluxes and powers for individual indexes are indicated on the product data sheet.

The parameters in the data sheet are given for Ta=25°C.

Code	Dimensions [mm] W H	Mounting dimensions [mm] ØS	Pallet quantity	Quantity in package	Net weight [kg]
<b>Type: IP20</b>					
03055X.XL01.3X1	100 68	90	360	1	0.5
03055X.XL02.3X1	100 68	90	360	1	0.5
03055X.XL03.3X1	100 68	90	360	1	0.5
03055X.XL04.3X1	100 68	90	360	1	0.5
03055X.XL01.3X3	100 68	90	360	1	0.5
03055X.XL02.3X3	100 68	90	360	1	0.5
03055X.XL03.3X3	100 68	90	360	1	0.5
03055X.XL04.3X3	100 68	90	360	1	0.5
<b>Type: IP20/54, IK06</b>					
03063X.5L01.3X1	106 73	90	360	1	0.5
03063X.5L02.3X1	106 73	90	360	1	0.5
03063X.5L03.3X1	106 73	90	360	1	0.5
03063X.5L04.3X1	106 73	90	360	1	0.5
03063X.5L01.3X3	106 73	90	360	1	0.5
03063X.5L02.3X3	106 73	90	360	1	0.5
03063X.5L03.3X3	106 73	90	360	1	0.5
03063X.5L04.3X3	106 73	90	360	1	0.5



## OTHER PICTURES



IP20/54



INTO R family

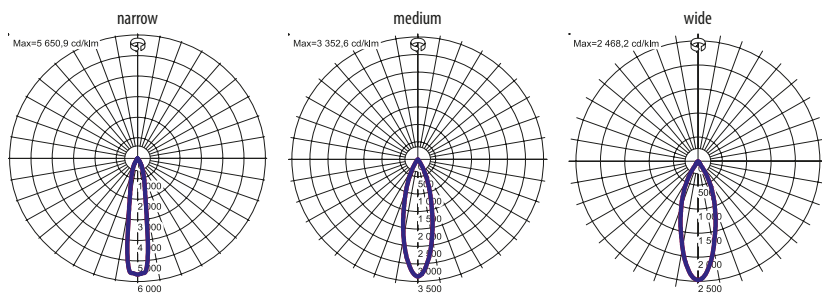
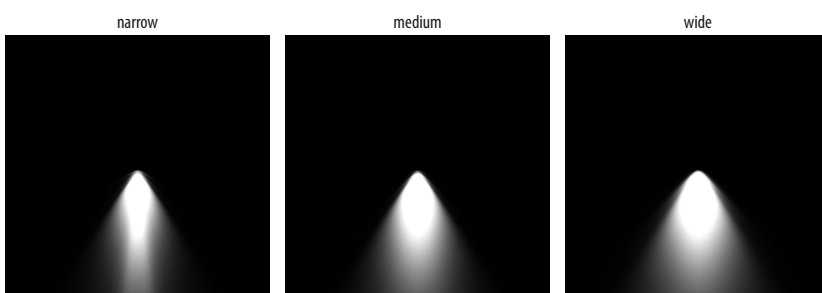
Luminous flux tolerance +/- 10%.

Power tolerance +/- 5%.

Up-to-date product info and General Warranty Terms available on our website [www.luglightfactory.com](http://www.luglightfactory.com)

Detailed information on luminous fluxes and powers for individual indexes are indicated on the product data sheet.

The parameters in the data sheet are given for Ta=25°C.

**LIGHT BEAM CURVES****WAY OF LIGHTING**

Luminous flux tolerance +/- 10%.

Power tolerance +/- 5%.

Up-to-date product info and General Warranty Terms available on our website [www.luglightfactory.com](http://www.luglightfactory.com)

Detailed information on luminous fluxes and powers for individual indexes are indicated on the product data sheet.

The parameters in the data sheet are given for  $T_a=25^{\circ}\text{C}$ .