

Isolate from the mains supply before any maintenance.

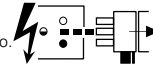
Vor Wartungsarbeiten von der Netzspannung trennen.

Veillez isoler le luminaire du courant avant toute maintenance.

Aislar de la red eléctrica antes de cualquier operación de mantenimiento.

Koppel het toestel af van de netspanning voor elk onderhoud.

Isolera från elnätet innan något underhåll.



Switch Off

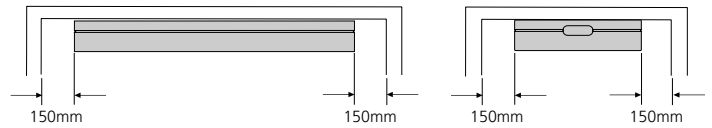
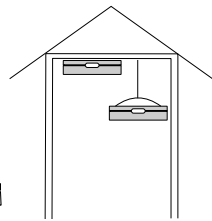
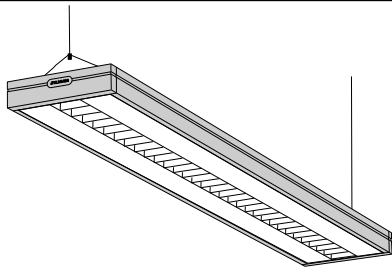
Abschalten

Débrancher

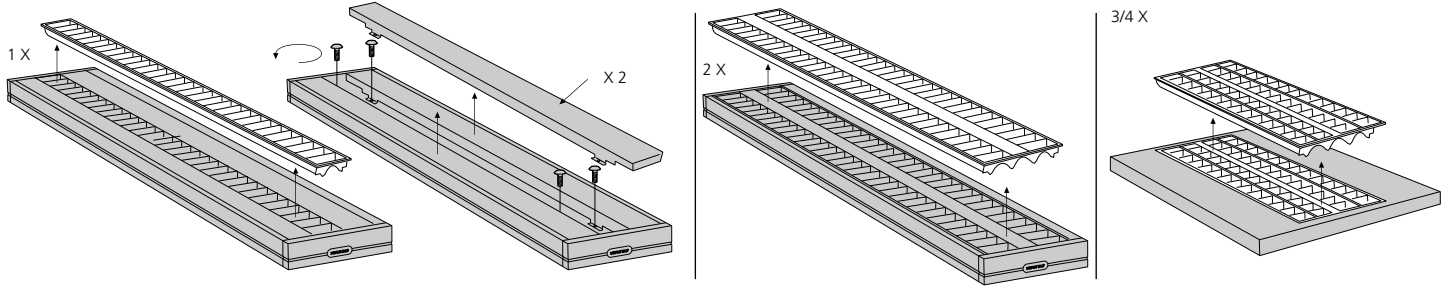
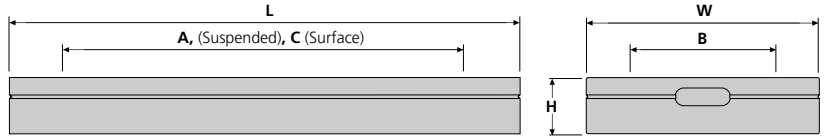
Desconectar

Uitschakelen

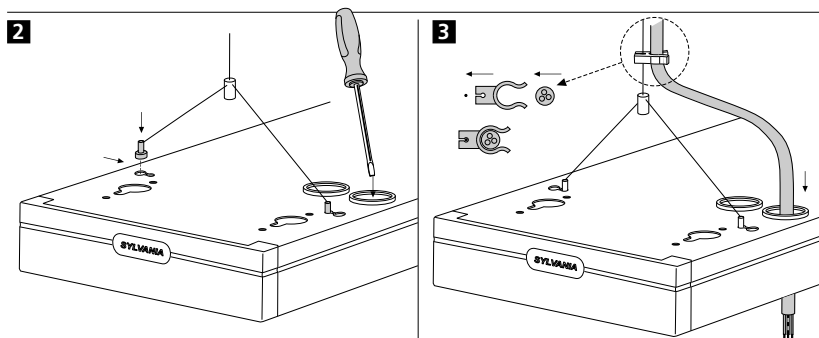
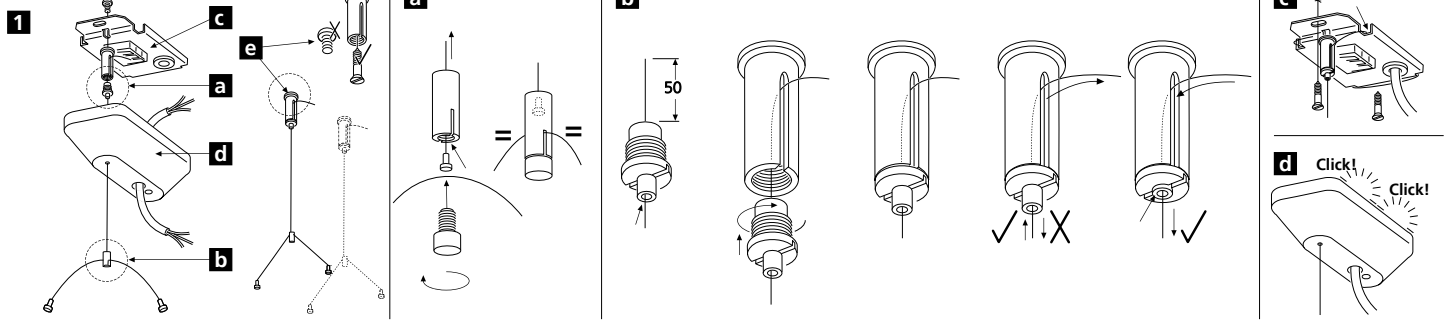
Stäng av



	Size (mm)				Susp. Fix.		
	L	W	H	A	B	C	kg.
3 x 14W	615	615	50	460	270	480	4.4
4 x 14W	615	615	50	460	270	480	4.5
2 x 14/24W	583	187	47	400	n/a	527	1.5
1 x 28W	1183	187	47	1000	120	1060	3.2
2 x 28W	1183	187	47	1000	n/a	1060	2.7
1 x 35W	1483	187	47	1300	120	1360	3.5
2 x 35W	1483	187	47	1300	n/a	1360	3.0
1 x 54W	1183	187	47	1000	120	1060	3.2
2 x 54W	1183	187	47	1000	n/a	1060	2.7

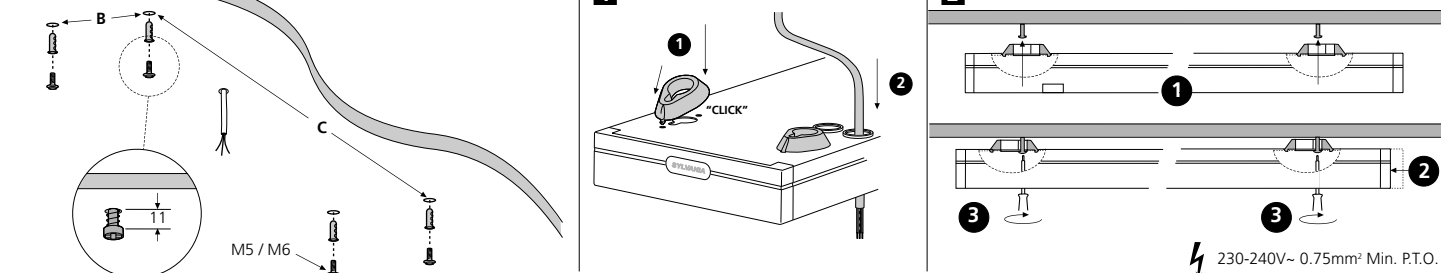


Suspended

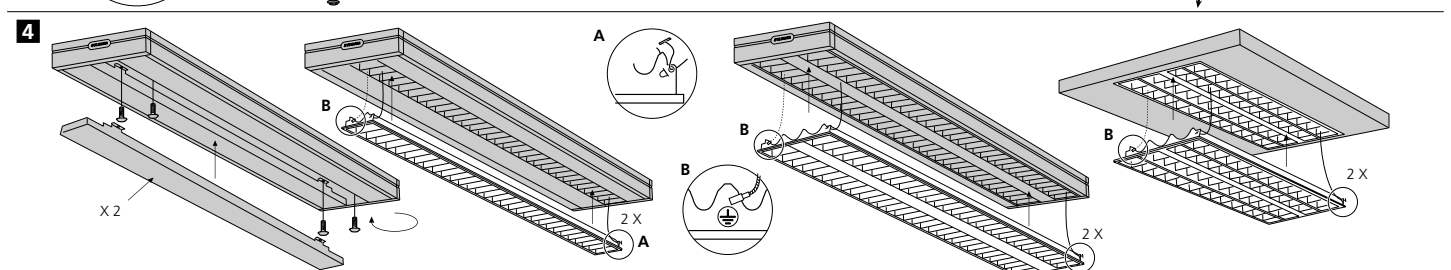


⚡ 230-240V~ 0.75mm² Min. P.T.O.

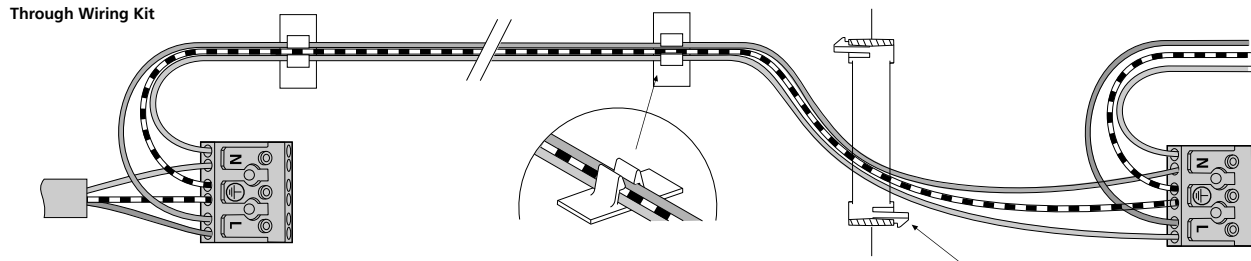
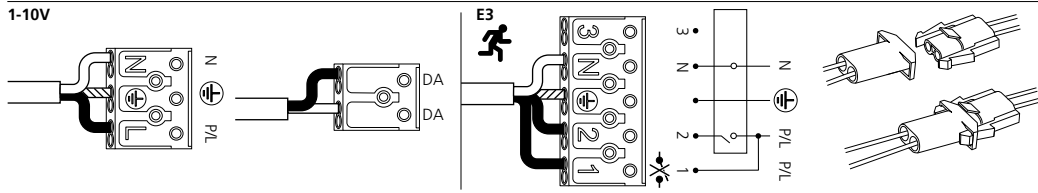
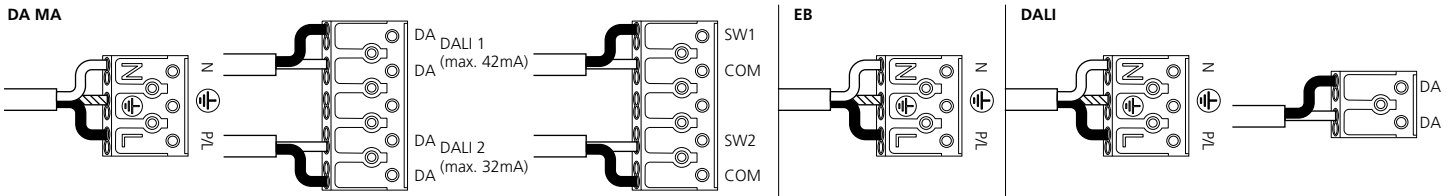
Surface



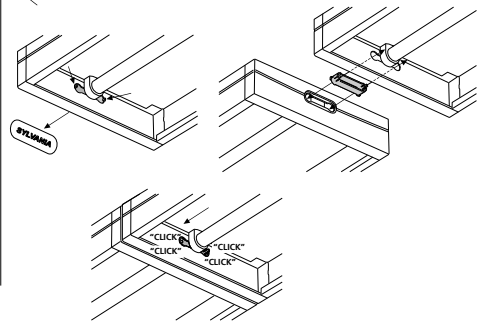
⚡ 230-240V~ 0.75mm² Min. P.T.O.



⚡ 230-240V~ 0.75mm² Min.



2 0050622 - In Line Connector



Routine Testing

Testing should be carried out in accordance with the recommendations of BS5266.

1. A monthly functional test.
2. Twice yearly, a one hour test.
3. Every three years, a full three hour duration test.

The above tests assume a three hour system.

4. Batteries should be replaced when the luminaire no longer meets the 3 hours duration performance.
5. Testing could be performed by interrupting the fixed phase supply for the test duration, during which the luminaire should remain lit.
6. Ensure that the 'LED' is 'OFF' during 'Discharge Mode', and 'ON' during 'Charging Mode'.
7. Replace faulty lamps immediately.

To assist with this testing, a test card is included below.

If the charge indicator (LED) is unlit, this signifies a fault. To increase the chance of a fault being reported between monthly tests, it is desirable that staff are made aware of the purpose of the indicator.

This module should not be modified or repaired by any person other than those nominated by the manufacturer. ANY unauthorised modifications may render the module unsafe and will invalidate our warranty and conformance to any safety standards that may apply. The company will accept no responsibility for any modified modules, or for damage caused as a result of modifications.

All details are given for guidance only and do not constitute a contract. We reserve the right to change the characteristics of products without notice.

Test Record

Type:.....	Location.....					
Month	Test	1st Year	2nd Year	3rd Year	4th Year	5th Year
	1. Functional					
	2. Functional					
	3. Functional					
	4. Functional					
	5. Functional					
	6. Functional					
	7. Functional					
	8. Functional					
	9. One Hour					
	Three Hour					
	10. Functional					
	11. Function					
	12. Funtional					

Suitable for use indoors

Geeignet für Innenanwendung
Pour un usage interne
 Adecuada para uso en interiores
Geschikt voor gebruik binnen
 Lämplig för inomhusbruk



Should you have any queries with this product please contact your local **SYLVANIA** stockist

