



13/18W

26W

Technical Application Guide for PHILIPS LED Lamps

Philips TrueForce Core LED Urban

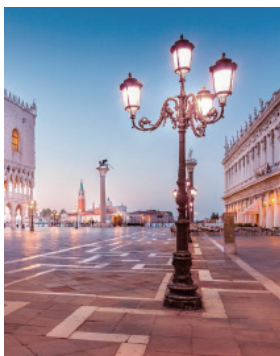


PHILIPS



Introduction

Philips TrueForce LED Public lamps provide an easy LED solution with a fast payback to replace High-Intensity Discharge (HID) lamps. These lamps bring the energy efficiency and long lifetime benefits of LED to HID replacement, with a low initial investment delivering instant savings. With the right lamp size and light distribution, customers can easily install TrueForce Core LED lamps into their existing system, thereby enhancing the light quality without having to change the fixtures.



Benefits

- Cost saving with short payback time
- Low initial investment
- Enhance lighting quality with easy adoption

Features

- High energy efficiency, >153lm/W
- Long lifetime 25,000hrs
- Same/right lamp size and lighting distribution
- Pleasant white light with CRI 80
- IP65 design, suitable to use in the enclosed/open fixture



Applications

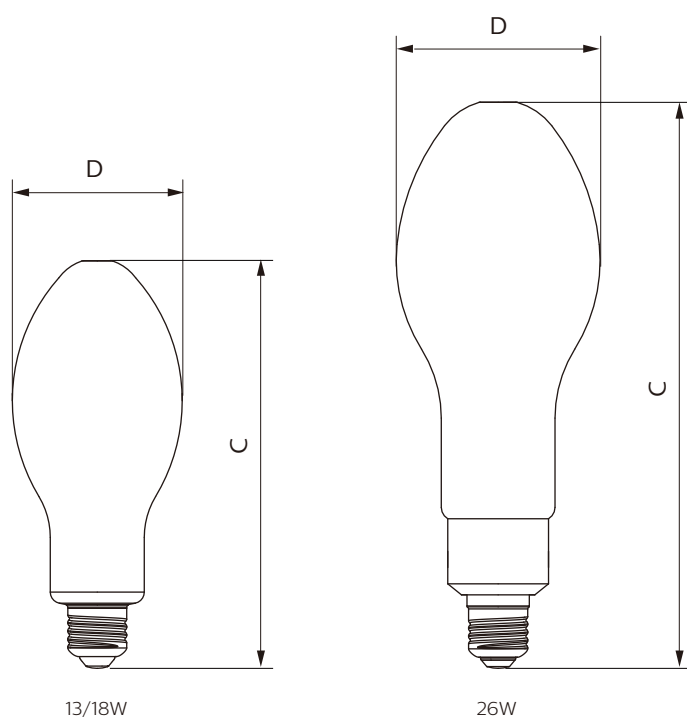
- Public Urban – Streets, Parks, Squares
- Public Road/Area – Streets, Area

Technical Specifications

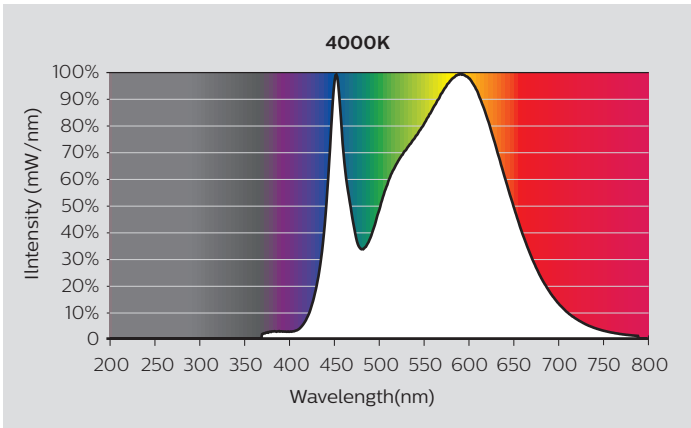
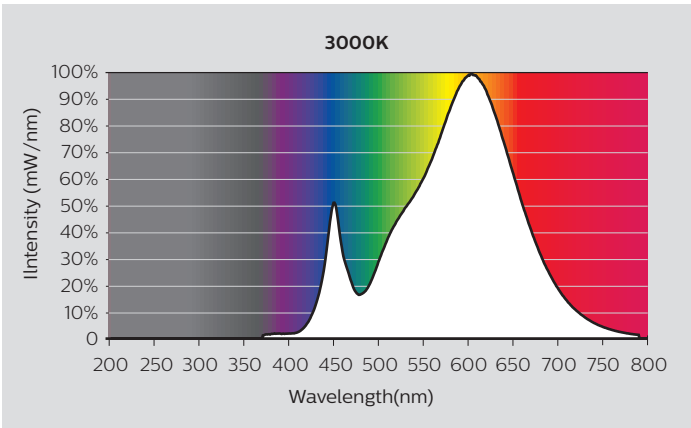
Product description	Lumen Output	Wattage	Color Temp	Beam Angle	Voltage	Cap	Lifetime	CRI	Dimmable
	lm	W	K	o	VAC		hrs		
TForce Core LED HPL 13W E27 830 FR	2000	13	3000	300	220-240	E27	25000	80	No
TForce Core LED HPL 13W E27 840 FR	2000	13	4000	300	220-240	E27	25000	80	No
TForce Core LED HPL 18W E27 830 FR	3000	18	3000	300	220-240	E27	25000	80	No
TForce Core LED HPL 18W E27 840 FR	3000	18	4000	300	220-240	E27	25000	80	No
TForce Core LED HPL 26W E27 830 FR	4000	26	3000	300	220-240	E27	25000	80	No
TForce Core LED HPL 26W E27 840 FR	4000	26	4000	300	220-240	E27	25000	80	No

Fixture compatibility

Product description	C max. Overall Length	D max. Diameter	Weight
	mm	mm	g
13W LED HID lamp	180	75	120
18W LED HID lamp	180	75	130
26W LED HID lamp	245	90	240

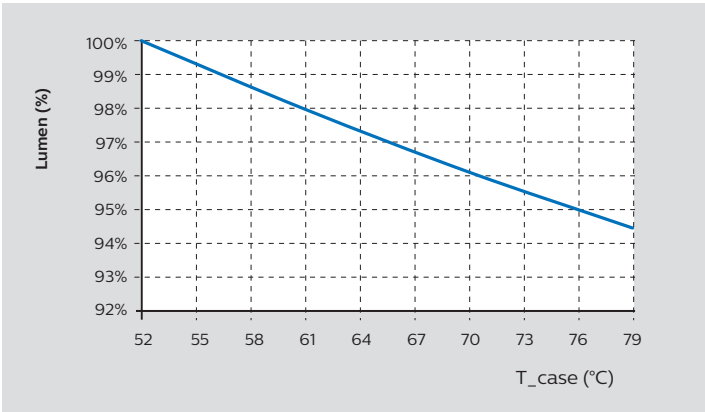


Spectral Power Distribution

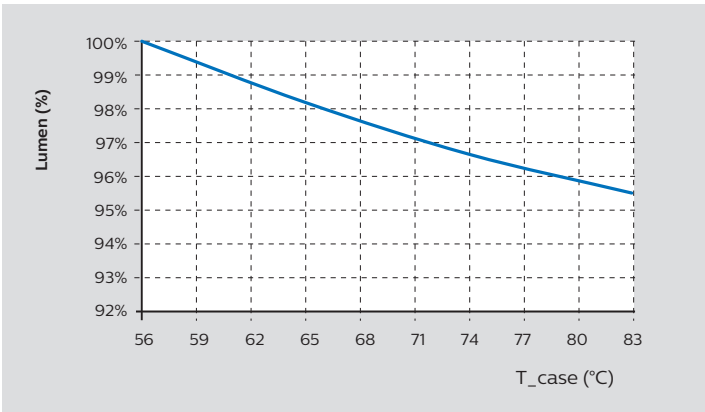


Temperature

13/18W LED HID lamp

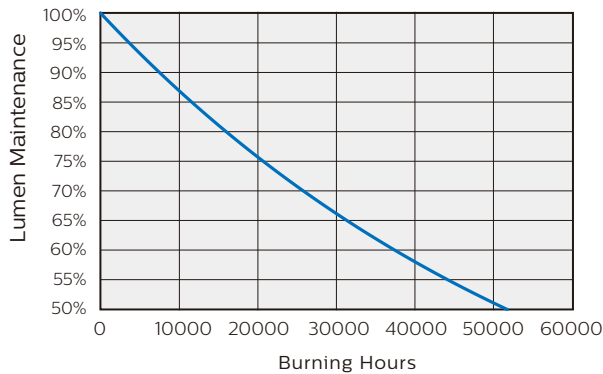


26W LED HID lamp

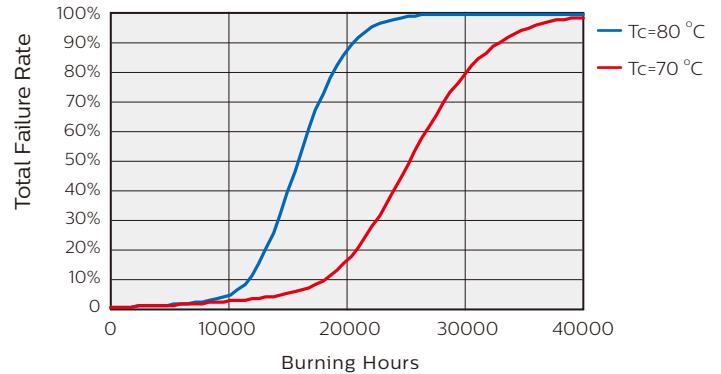


Lifetime + Sustainability

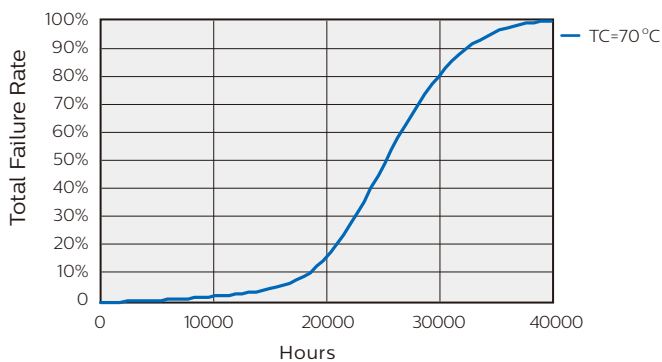
Lumen Maintenance vs Lifetime



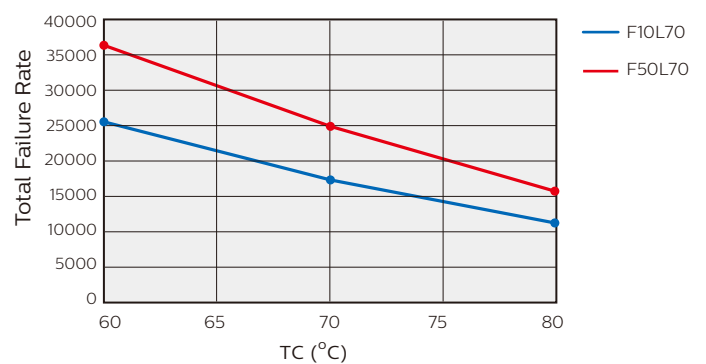
Failure Rate vs Lifetime



Lifetime vs. Failure Rate @ Ta 25 °C



Lifetime vs. Tcase



- Philips TrueForce LED Public lamps have lifetime of 25,000 hours, defined as the number of hours when 50% of a large group of identical lamps fall below 70% of its initial lumens.
- Lifetime estimation based on the application environment condition: please refer to the Tc for lifetime forecast.

WARNINGS & CAUTIONS

- Always switch off the power supply before commencing work!
- Please read the installation instructions carefully and follow the wiring instructions to ensure safety.
- The product is NOT dimmable.
- The product can be operated on Direct Mains or ElectroMagnetic (EM) gear without ignitor. Ignitor ALWAYS needs to be disconnected from the system.
- Recommended to remove capacitor to improve system power factor..
- The product is not compatible with electronic gear.
- Suitable for use in operating temperature range between -20°C to +45°C.
- Do not change the structure or any components of the product to ensure safety.
- The product is designed to fit in standard IEC compliant E27 lamp holders.
- The product should be installed by qualified professional.

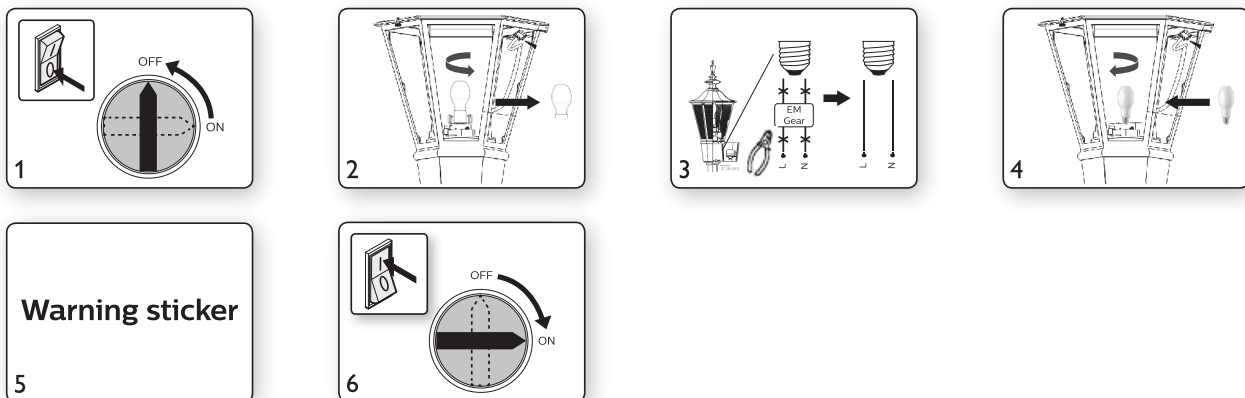
- Perform inspection before installation to ensure the luminaire and lamp holder are in good condition to carry the weight and performance of the product.
- Recommended not to use in open luminaire.
- Please do not apply the product in applications which contains emergency or/and explosive proof luminaires.
- The total system performance may vary depending on the lighting/luminaire system.
- For latest information, please refer to www.philips.com/lighting.
- In case of doubt, please consult Philips representative.
- *Outdoor applications requires the lamp cap to be protected with suitable lamp socket.

DISCLAIMER:

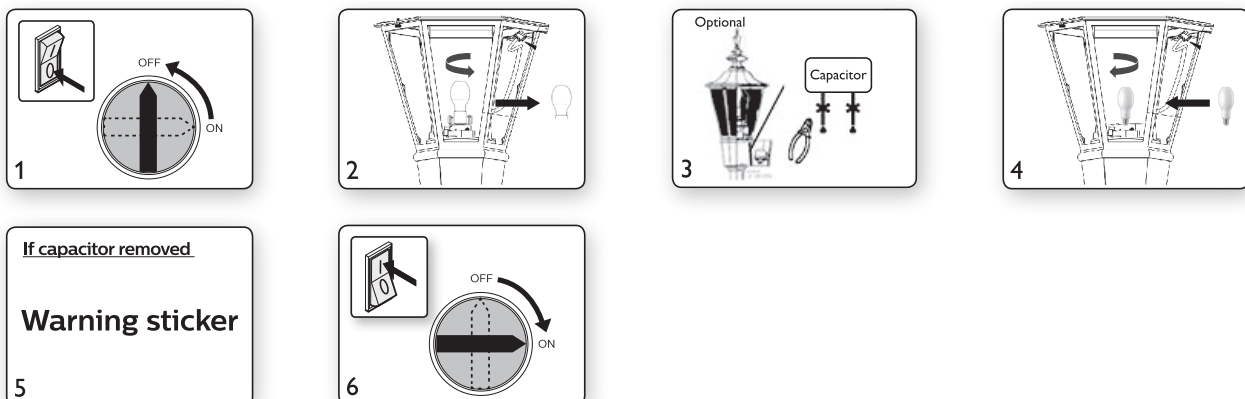
Signify disclaims liability for any direct, indirect or incidental damages in case of installation performed either not according to this guide or not performed by a professional electrician.

Installation Guide

• For replacing HPL/SON/Other Lamps, Convert to Direct Mains (Recommended)

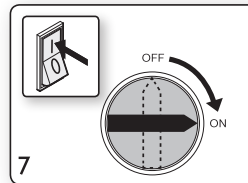
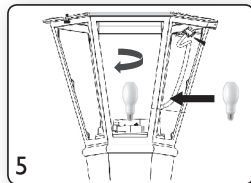
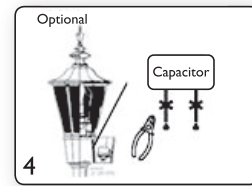
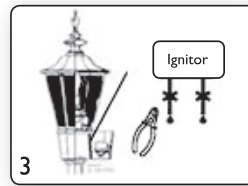
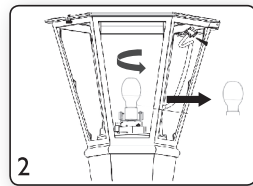
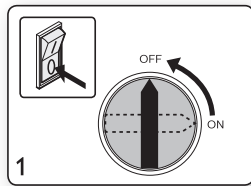


• For replacing HPL Lamps and keeping the EM ballast



- After capacitor is removed, open wires should be terminated properly.
- If capacitor remains the power factor might be lower.

• For replacing SON Lamps and keeping the EM ballast



- After capacitor/ignitor is removed, open wires should be terminated properly.
- If capacitor remains the power factor might be lower.



© 2019 Signify Holding.

All rights reserved. Reproduction in whole or in part is prohibited without the prior written consent of the copyright owner. The information presented in this document does not form part of any quotation or contract, is believed to be accurate and reliable and may be changed without notice. No liability will be accepted by the publisher for any consequence of its use. Publication thereof does not convey nor imply any license under patent or other industrial or intellectual property rights.

12/2019

www.philips.com/lighting