

Webbing Options >>

Tensabarrier® Wall Units are ideal for areas requiring periodic access restriction without taking up floor space. As part of the Tensabarrier® product line, the world's original retractable webbing barrier system, our wall units use the same retracting mechanism as the floor standing Tensabarrier® posts.

Tensator's webbing cassettes have a patented braking system that incorporates twin brake shoes. This slow retract technology allows the webbing to fall to the floor upon release and then slowly and safely retract back into the post, eliminating the risk of an accident.



Industry Applications >>



Retail

Close off checkouts, alcohol displays or changing rooms.



Factory / Warehouse

Shut down aisles when using forklifts; use as a hazard warning for empty loading docks; create quarantine areas; or restrict access during maintenance work.



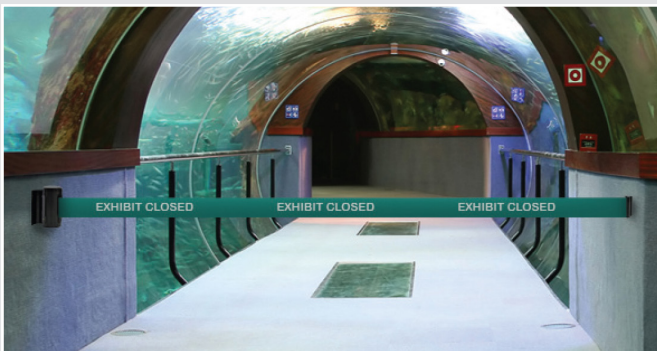
Hospital / Healthcare / Schools

Control or restrict corridor access during maintenance work or cleaning.



Airports / Bus / Train Station

Prevent access to lifts and escalators during periods or close check-in desks.



Museum / Amusement Parks

Mark closed rides, attractions or displays.



Product shown:

897P 150mm wide webbing belt creates a more visible barrier and ensures printed message will stand out.

1



50mm webbing

896 Mini / HC

Webbing Length:

896 Mini: 2.3m**896 HC:** 3.65m**Colours:**

Available in the full range of finishes.

Our classic compact and economical unit for multiple applications. Easy to install and extremely reliable.

2



50mm webbing

896CM**Reverse Mount**

Webbing Length: 2.3m

Colours:

Available in the full range of finishes.

The webbing cassette is reversed on the mounting bracket which allows the unit to be concealed and installed flush against a wall surface.

3



50mm webbing

892N**Recess Unit**

Webbing Length: 2.3m

Colours:

Black and White

Designed for mounting in a recess, the 892N features a subtle and discreet front fascia.

Can be alarmed.

4



50mm webbing

897/899

Webbing Length:

897: 4.6m**899:** 7.7/9.0m**Colours:****Body:** Black**Caps:** Red, Chrome, Black, Yellow

Available in a variety of housing colours, the 897 provides long length barriers that are both practical and appealing.

5



150mm webbing

897P

Webbing Length:

2.0m**Colours:****Body:** Black**Caps:** Red, Chrome, Black, Yellow

An industry-first, the 897P features a 150mm wide webbing belt.

Whether used with a standard webbing colour or with a preprinted message, this 150mm wide belt ensures that your message will stand out.



897

Developed from seatbelt technology, the Tensabarrier's retracting mechanism is the only one in the market designed to meet automotive reliability standards. Tested to over 250,000 cycles ensuring reliable performance in even the most demanding of environments.



Mounting Options >> Tensabarrier® wall units offer a choice of 6 mounting options and make installation on any surface a possible.

Standard Mount

Easily and securely screw onto a wall or sturdy surface. Three screws are concealed by end caps for discreet mounting.

**Removable (semi permanent)**

Slides onto a mounting plate which is screwed into a wall, providing a semi-permanent installation.

**Warehouse Rack Mount**

Clips to the keyholes on standard warehouse racking for instant mounting and removal.

**Glass Mount**

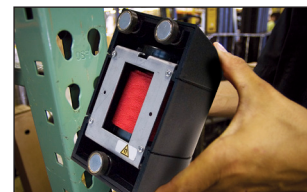
Strong adhesive pads attach the wall mount to any glass fixing.

**Clamp Mount**

Ideal for mounting to an upright such as a pole or warehouse storage rack. Simply tighten screws on the jubilee clip for fast, secure mounting.

**Magnetic Mount**

Powerful magnets fasten the wall unit to almost any metal surface. Can be removed with a simple twist and pull motion.



turn over for tape end & webbing options >>

Tape End Options >>

Standard >>

Standard Tape End *

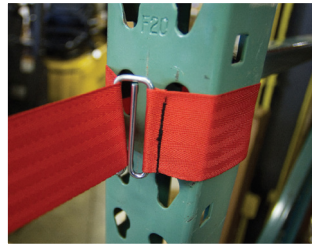
Includes the 898 Wall Receiver, which is screw mounted to the opposite wall.



Other Options >>

Wire Clip Tape End

A metal clip secures the belt end by looping around an upright and clipping back on the webbing. Ideal where the clamp mount is used and attaching a wall receiver is not practical.



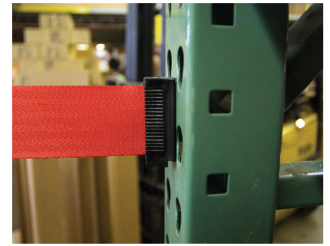
Panic Break Tape End *

Provides a panic breakaway in both directions, allowing for a fast exit in an emergency. Supplied with the 898 Wall Receiver; which is screw-mounted to the opposite wall.



Magnetic Tape End

The tape end contains a magnet, so that the webbing can be attached to metal surfaces without the need for a wall receiver.



*Wall receivers are supplied with all wall units ordered with the standard and panic break belt end.

Webbing Options >>

All Tensabarrier® webbing is made from heavy duty woven polyester and has an 1,100 lb. breaking strain. Tensator's webbing is weather resistant and will last for years without fraying or fading.

50mm Options >>

Available in nearly 40 vibrant colours, Tensabarrier® webbing is also offered with 12 preprinted safety messages. Custom messages and logo designs can be produced in any number of colours by digital printing processes.

Standard 50mm Printed Messages

Order code shown in bold

Cleaning in progress	YC
LIFT OUT OF SERVICE	YL**
Authorised Access Only	RA
Beware Open Pit	YO
Caution - Do Not Enter	YA
Danger Forklift Trucks	YG**
No Entry	RB
EMERGENCY EXIT	GE

*Message printed on one side only,

**Webbing not available in 3.65m

Due to printing limitations, actual webbing colours may vary slightly from colours shown

150mm Options >>

Available in 8 vibrant colours, 150mm wide webbing are also offered with 4 preprinted safety messages. Custom messages and logo designs can be produced in any number of colours by digital printing processes.

Standard 150mm Printed Messages

Order code shown in bold

AUTHORIZED ACCESS ONLY	RAW
NO ENTRY	RBW
CAUTION - DO NOT ENTER	YAW

How to order >>

Email: weborders@tensator.com

MILTON KEYNES	NEW YORK	DUBAI	PARIS	FRANKFURT	MADRID	LISBON	WROCLAW
+44 1908 684600	+1 631 686 0300	+971 4 2997228	+33 1 43 09 85 00	+49 69 3003 890-0	+34 914 904 148	+351 211 991 510	+48 71 359 3800