

# SimPal-T2

GSM Temperature Monitor



SimPal-T2 is the simple DIY temperature monitor device, come with GSM module, temperature sensor, use to monitor environment temperature, only need to install SIM card and plug into wall socket, then it can sending temperature value message by SMS to user's mobile phone. Connect with external higher accuracy external temperature sensor, the sensor can put inside water or extremely high/ low environment, SimPal-T2 also support power lost/restore alert, sending SMS when 220V power lost.

## Main Features:

- Temperature checking: Sending SMS to check the current temperature value of environment.
- Temperature alert: easy set temperature range, SimPal-T2 will auto sending SMS once temperature out or back the setting range.
- Waterproof temperature sensor: waterproof wide temperature range -30 to 100C.
- Power failure alert: SimPal-T2 will sending SMS once power lost or restore.
- EU, AU, UK and US plug available.



## Packing content:

Temperature Monitor: 1pcs  
Cable temperature sensor: 1pcs

### Xiamen SimPal Communication Technology Co.,Ltd.

Add: 3F, No. 2208 Dianqian Industrial Zone, Huli District, Xiamen 361006 China.

Tel: +86-592-6088626

Fax: +86-592-6088626

Mob: +86-13860499337

Skype: vincentjiang2008

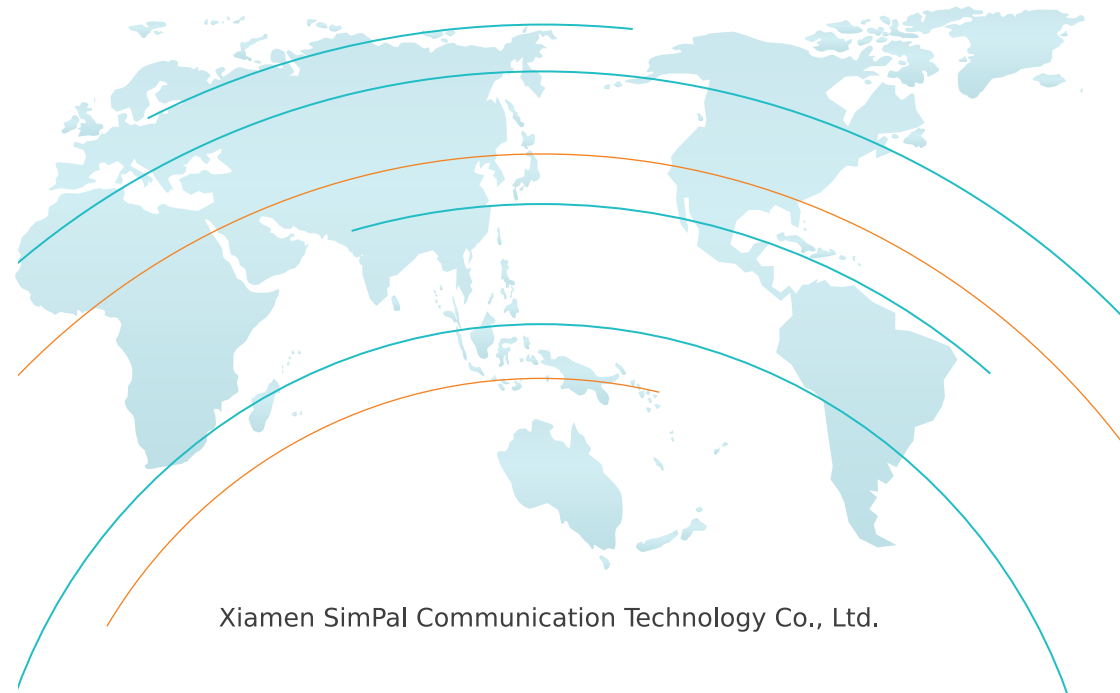
Web: www.simpal.cn

Email: sales@simpal.cn

# SimPal

Xiamen SimPal Communication Technology Co., Ltd local in Xiamen, China. We mainly working on GSM/3G/4G/WiFi intruder alarm system, GSM/WiFi power socket etc products. The R&D engineers have been working on GSM/WiFi products more than 10 years, proficient in hardware design, firmware development.

Quality is the life for the company, we have design exactly product testing flow for each model and make 100% test during production. Top quality product will maintain long term relationship with our customer.



Xiamen SimPal Communication Technology Co., Ltd.

# SimPal-W230

WiFi Power Control



SimPal-W230 WiFi Power Control is the simple WiFi power control system. Main unit power plug come with WiFi module, RF 433Mhz module and temperature sensor, can be working as thermostat, connecting with 10pcs wireless sensor for smart control and home alarm.

## Main Features:

- Power control: remotely on/off power via APP, support timer control, schedule control.
- Temperature monitor: know real-time temperature on APP, set power plug work as thermostat.
- External accessories: working with 10pcs wireless sensor and unlimited wireless siren. Door magnetic, PIR detector, smoke detector etc sensors available.
- Home alarm: once sensor trigger, auto push message to users APP.

## Packing content:

SimPal-W230 WiFi power plug: 1PCS  
WDS-051-F Door magnetic: 1PCS  
WIR-053-F PIR detector: 1PCS

# SimPal-G212

GSM Alarm System



SimPal-G212 GSM Alarm System is the GSM alarm with digital time display. Main unit come with GSM module, RF 433Mhz wireless module, speaker and 110dB siren, support 16pcs wireless sensor, two ways talking, loud sound alarm. Use for home emergency dialer and intruder alarm.

## Main Features:

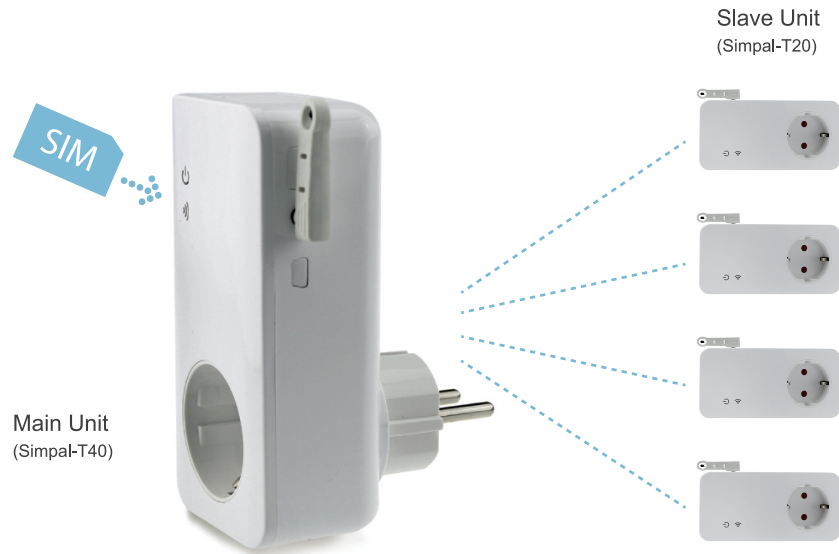
- Work with SIM card: working at GSM network, use for emergency calling and send SMS to notify sensor alarm.
- Work with wireless sensor: connecting 16pcs wireless sensor and unlimited wireless siren, door magnetic, PIR motion detector, smoke detector available.
- Power lost alert: send SMS to notify 220V power change.
- Easy configure: Three touch button, easy arm/disarm by press touch button. Also can be operating on remote control or APP in mobile phone.

## Packing content:

SimPal-G212 Main Panel: 1 PCS  
WRC-047-F Remote control: 2 PCS  
WDS-051-F Door magnetic: 1 PCS  
WIR-064-F PIR detector: 1 PCS

# SimPal-T40

## GSM Power Socket



Main Unit  
(Simpal-T40)

Slave Unit  
(Simpal-T20)

SimPal-T40 GSM socket is a simple and powerful system to remotely control the power to the electrical devices or electrical outlets at home via SMS or app in mobile. The main unit also functions as an alarm during a power failure or temperature deviations. It can be expanded with four slave units and up to five different power outlet can be individually controlled with only one SIM card. Switching on or off the current can be controlled according to a schedule or with a thermostat function.

### Main Features:

- Work with SIM card  
Installed SIM card and plug to power outlet, then it can be remotely on/off power by calling the SIM card number.
- Temperature sensor  
Both main unit and slave units have individual temperature sensors. It allows you to remotely monitor the temperature, thermostat controlling the electrical outlet and get alerts when the temperature deviations from each device.
- Thermostat control  
The power can be automatically turned on or off if the temperature falls below or exceeds a preset interval.

- Power failure alarm  
Device come with built-in power capacitor. It can send SMS to notify power failure.
- Easy to install  
The devices installs quickly in just minutes. All it takes is a SIM card to the main unit.
- Powerful socket  
Devices with a consumption of up to 16A or 3600W can be connected on power socket.

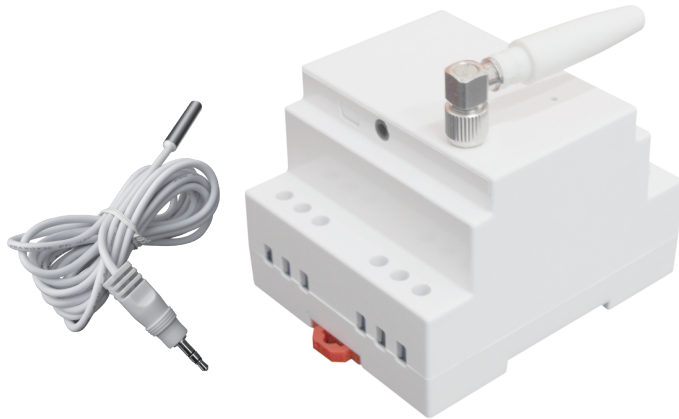
### Compare GSM socket models

Model	SimPal-T4	SimPal-T40	SimPal-T20
Dimension (No included plug parts)	12.5×6.0×3.8cm	12.5×6.0×3.8cm	12.5×6.0×3.8cm
Weight	176g	181g	167g
SMS control	YES	YES	YES (Need to pair with T40)
Temp alarm	YES	YES	YES
Thermostat	YES	YES	YES
Schedule control	YES	YES	YES
Power failure alert	YES	YES	NO
Socket type	Schuko, French, UK, AU		



# SimPal-D210

DIN-Rail GSM Power Control



SimPa-D210 GSM Power Control working with SIM card, compact power transformer design, 110-230V AC power input, both 110-230V AC and 12V DC power output; Connected 110-230V output with electric appliances or connected your gate opener to the 12V DC output, then you can use your mobile phone to control appliances or gate opener by free calling.

Work with two wired sensor and one siren, once sensor trigger, auto turn on siren and send SMS alarm. External temperature sensor to report temperature value SMS to your mobile phone.

Apply for gate opener, remote power control, security alarm etc.

## Main Features:

- Remote power control: turn on/off power by free calling.
- Compact transformer design: 230V AC input, both 230V AC and 12V DC output , no need extra power adaptor.
- Temperature sensor: support temperature alarm and thermostat power control.
- Schedule or timer control: auto on/off power according setting schedule or turn on/off power for some minutes.
- Sensor alarm: two lines sensor input and one 12V DC output, when sensor trigger, auto turn on 12V power for some seconds.
- Work as gate opener: calling to trigger gate opener system to open the gate.

# SimPal-G4

GSM PIR Camera



SimPal-G4 GSM PIR camera, the simple image capturing devices, integrated PIR human motion detector and telecom 2G/3G GSM module. Once camera detect motion, it will auto capturing images and sending the images by email; also support SMS, voice calling to notify user.

Perfect selection for summer house, home, office, shop or warehouse security.

## Main Features:

- Worked on 2G/3G GSM Network, send SMS to mobile phone and send HD alarm images by email via cellular data.
- 5.0M pixels camera lens, sending HD 1280\*768 images to user's email via Cellular or WiFi network. (Only 900/2100Mhz support WiFi)
- PIR detection: Built-in PIR detector, auto send SMS or pictures once detect human motion.
- External accessories: Work with 16pcs wireless sensor and unlimited quantity wireless siren.
- Real time audio: call the camera number (SIM card) to listen in live voice.
- Built-in lithium battery: Rechargeable battery ensures operation if any external power failures.

## Packing content:

SimPal-G4 Camera	1pcs
Power adaptor	1pcs
Metal bracket	1pcs
Manual	1pcs

