



celotron
MAKES LIFE EASIER™

7" Touch Screen IP Camera Tester

CE-TC7086IP (Snro: 71 636 22)

7inch wide view Capacitive touch screen / ONVIF support more than 30 IP cameras + auto search (Hikvision, Dahua, Honeywell, Samsung, Sony, etc.) / Mobile Client Video / 12V 2A output power/ 5V 2A power bank / PoE output power supply / HDMI output / WIFI



IP camera tester is great CCTV tools for IP camera's installation and maintenance, both for Analog and IP camera test, built in video level meter, Analog and digital video signal output, IP address scan, Ping test, Port flashing, cable test, Digital Multi-meter, optical power meter and TDR cable tester etc ,very easy to operate

Wide brand and model support IP camera tester (all Onvif). After charging 7~8 hours, normal working time +16 hours, built in WIFI, test Wireless IP Camera: 12V 2A power output for camera ,48V PoE power supply, Directly provide PoE power to IP Camera 5V 2A power output(as a power bank 13000mAh),HDMI output; Audio input and output, Network bandwidth testing, image 180 degree rotating, the power and network ports on the top of the tester, easy to connect the cable.

Application

- CCTV system installation and maintenance
- Network cabling project installation and maintenance
- Dome camera IP camera testing
- Video transmission channel testing
- PTZ controller

Features:

1. 7 inch touch screen, 800*600 resolution. **NEW**
2. Capacitive touch screen ,OSD menu,
3. Touch screen and key operation **NEW**
4. Built-in WIFI, wireless network camera test **NEW**
5. Support 1080P HD cameras up to 5MPix **NEW**
6. Support ONVIF camera ,and Support DAHUA,Haikang,KEDA,Samsung,HIKVISION and TIANDY camera.ect
7. Support running the mobile phone or tablet mobile client software of the IP camera manufacturers.
8. Image can rotate 180 degrees **NEW**
9. Display real resolution of the IP camera images



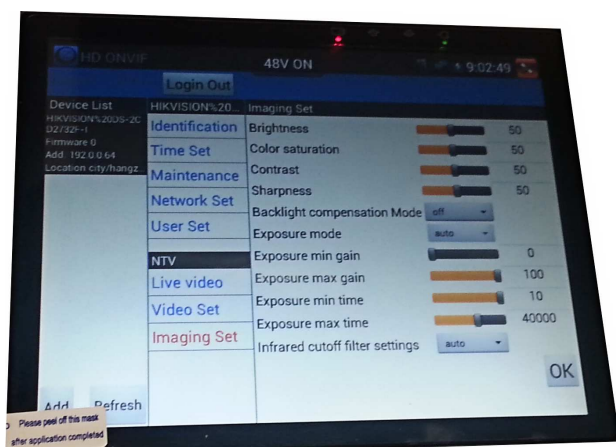
10. Video screenshot ,video recording ,files named and save, easy to find **NEW**
11. Support network PTZ controller (**ONVIF**)
12. Support 1080P HD video files and MKV/MP4 media files play
13. PTZ controller ,Photograph, Video record, Record playback
14. Video level meter, Video PEAK lever, SYNC level, COLOR BURST measurement **NEW**
15. Optical Power Meter, it can measure the optical power value
16. Visual fault locator , to test fiber's bending and breakage *
17. TDR cable test, Digital Multi-meter, optical power meter, and Visual fault locator, etc function ; **NEW**
18. Digital video color bar output, analog video color bar and testing image output **NEW**
19. POE voltage measurement, PING test ,IP address scan, port flashing etc
20. PoE DC48V power output , Max power 24W ; **NEW**
21. 12V /2A power output **NEW**
22. 5V 2A power output , as the power bank **NEW**
23. HDMI output, 1920*1080P Resolution ; **NEW**
24. Audio in /out
25. LED lamp, calculators, music players and other application tools
26. Support customers self update software
27. Lithium Ion Polymer Battery, working time lasts 16 hours



Specifications

Model	CE-TC7086IP
Display	7 inch Capacitive touch screen , resolution 800 (RGB) x 600
Network port	10/100M auto adjust, RJ45
WIFI	Built in WIFI, speeds150M, receive wireless camera image etc.
Example: IP camera types	ONVIF , ACTi、 Dahua IPC-HFW2100P、 Hikvision,DS-2CD864-E13、 Samsung SNZ-5200、 Tiandy TD-NC9200S2、 Kodak IPC120L、 Honeywell HICC-2300T、 Aipu-waton IP5000-BC-13MP/IRS06-13MP、 fine-Tida IPC、 FSJ BY-1080Q、 WEISKY IPC camera etc. Can also be customized by importer.
Video level test	1 channel BNC Input & 1 channel Output , NTSC/PAL (Auto adapt)
Video level meter	PEAK video signal level, SYNC signal level, COLOR BURST chroma level measurement
Zoom Image	Support Analog camera and IP camera image zoom /move
Snapshots,Video record,Record playback	Image Screenshots, record ,save ,view and record play back
HDMI output	1 channel HDMI output, support 1920*1080P
12V/2Apower output	Output DC12V/2A power for camera
5V power output	5V 2A power output, as a mobile phone Power bank
PoE power output	48V PoE power output, Max power 24W。
Audio test	1 channel audio signal input, test whether sound normal, 1 channel audio signal, to connect headphone

PTZ control	Support RS232/RS485 control, Baud 600-115200bps, Compatible with more than 30 protocols such as PELCO-D/P, Samsung, Panasonic, Lilin, Yaan, etc
Video Signal Generator	Output one channel PAL/NTSC color bar video signal for testing monitor or video cable.(red, green ,blue, white and black color)
Network color bar generator	Local side PC can login the tester, send the signal by network ,test network connection communication whether normal
UTP Cable tester	Test UTP cable connection status and display in the screen. Read the number on the screen
Data monitor	Captures and analyzes the command data from controlling device, also can send hexadecimal
Network test	IP address scan, link scan, Ping test, Quickly search the connection IP camera and other device's IP address
Cable scan	Search the cable by the audio signal
PoE test	Measurement POE switch or PSE power supply voltage and cable connection status
Digital Multi-meter	AC/DC Voltage, AC/DC current, Resistance, Capacitance, Data hold, Relative measurement, Continuity testing . Testing speed: 3 times/ seconds, Data range -6600~+6600.
Optical power-meter	Calibrated Wavelength(nm) : 850/1300/1310/1490/1550/1625nm Power range(dBm) : -70~+10dBm
Visual fault locator	Test fiber's bending and breakage (SM and MM fiber)
TDR cable test	Breakpoint (cable length) and short circuit measurement(BNC cable, telephone cable)
POWER	
External power supply	DC 12V 2A
Battery	Built-in 7.4V Lithium polymer battery ,6500mAh
Rechargeable	After charging 7~8 hours, normal working time 16 hours
Parameter	
Operation setting	Capacitive touch screen, OSD menu, (English)
Auto off	1-30 (mins)
General	
Working Temperature	-20℃----+50℃
Working Humidity	30%-90%
Dimension/Weight	231mm x 172mm x 52mm / 1.26Kg



DISTRIBUTION IN SCANDINAVIA:

Celotron Oy
Yrittäjänkulma 5
33710 Tampere
Finland

Email: info@celotron.com
Phone: +358 3 2831 555
www.celotron.com