

# ELECTRIC SAUNA HEATER HARVIA GLOW CORNER EE

item number: HTRC7004EE / HTRC9004EE

models: TRC70EE / TRC90EE

**HARVIA**  
Sauna & Spa



## Modern design to sauna interior

- stylish and streamlined pillar electric sauna heater for a narrow space
- large amount of stones (50 kg) guarantee soft steam and steady heat
- stainless outer steel case

### Digital control panel features:

- touch screen digital display
- heat- and splash proof
- temperature meter display
- adjustment for temperature, timer, lighting switch and delay start
- dehumidifying function to dry the sauna room after use
- turns off automatically in case of overheating or temperature sensor malfunction
- child safety lock

## Technical data

Use	Compact medium sized saunas in domestic use
Type	Corner Pillar electric heater
Control type	With external digital control panel
Sauna room volume (m3)	6-10 m <sup>3</sup> (TRC70EE) 8-14 m <sup>3</sup> (TRC90EE)
Output (kW)	6,8 kW (TRC70EE) 9 kW (TRC90EE)
Supply voltage (V)	400 V 3N
Fuse (A)	3x10 (TRC70EE) 3x16 (TRC90EE)
Lightning output	230 V 1N~ (max 100 W)
Weight (kg)	15,3 kg (TRC70EE) 16,3 kg (TRC90EE)
Stone capacity	50 kg (Ø 5–10 cm, AC3000)
Protection class (IPxx)	IPX4

## Dimensions

Space requirements (Width x Depth x height)	430 x 430 x 1900 mm
Height	1105 mm
Width	330 mm
Depth	330 mm
Safety distance (front)	100 mm
Safety distance (top)	795 mm
Safety distance (bottom)	20 mm

# ELECTRIC SAUNA HEATER HARVIA GLOW CORNER EE

item number: HTRC7004EE / HTRC9004EE

models: TRC70EE / TRC90EE

**HARVIA**

Sauna & Spa

## Accessories

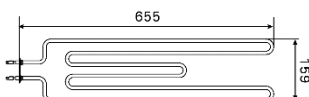


Safety railing HTRC3 and  
Illuminated safety railing HTRC3L

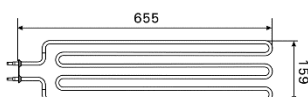


Embedding flange HTRC1

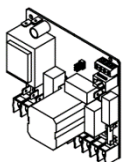
## Spare parts



ZRH-720 (TRT70EE)



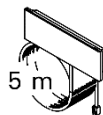
ZSE-259 (TRT90EE)



WX600



WX247



WX60

## Wiring diagram

