



Easy Rack Power Distribution

- Easy Basic Rack PDU
- Easy Metered Rack PDU
- Easy Switched Rack PDU



www.apc.com

Life Is 





Product feature by series

	Basic	Metered	Switched
Design feature			
Ultralow-profile in depth	√	√	
Hydraulic-magnetic circuit breakers (in units with 32A input current)	√	√	√
Environmental monitoring port for external temperature/humidity monitoring		√	√
Availability for regional outlets socket type	√		
Display and network management			
Full-featured network management capability via web, SNMP		√	√
User-interactive LCD display for local access		√	√
Field-replaceable network management module		√	√
Network port sharing (up to four Rack PDUs share one IP address)			√
Metering capability			
Active current measurements (amps)		√	√
Active power measurements (including volts, amps, real power (kW) and energy (kWh))		√	√
User-customizable alarms and warnings		√	√
Embedded log memory to record/review/report		√	√
Use access control with two levels		√	√
Outlet control			
Individual outlet remote power on/off control			√
Power-on sequencing and time delays with full user customization			√
Outlet level grouping (multiple outlets in same or multiple units follow single command)			√
Use access control with two levels		√	√
Installation and maintenance			
Ultralight for installation	√	√	
Field-replaceable network management module		√	√

Make Power Distribution Easy

The APC by Schneider Electric Easy Rack PDU is an easy-to-install, easy-to-use rack mount PDU which provide reliable power distribution to the equipment in the rack and with functionality of monitoring and control.

Easy Basic Rack PDUs

Reliable power distribution

Easy Metered Rack PDUs

- Real-time remote monitoring of connected leads
- User-defined alarms warn IT and data center managers of potential circuit overloads to prevent accidental power loss to critical equipment

Easy Switched Rack PDUs

- Metered functionality
- Switch on/off the connected power load remotely

Typical applications

- Small and medium data centers and computer rooms
- Manufacturing facilities
- Telecommunication
- Commercial buildings
- Healthcare
- Transportation

Easy for installation

- Ultra-light weight thanks to aluminum housing
- Support both toolless mounting and bracket mounting
- Built-in input cord with Industrial connector for vertical PDU
- Low-profile in depth, more convenience for equipment installation

Easy for operation and maintenance

- User-friendly and simple Web interface and LCD screen
- Support network port , easy for data communication
- Field-replaceable control module, easy for maintenance



Easy Basic Rack PDUs

APC Easy Basic Rack PDUs provide reliable rack power distribution via a single input with multiple output receptacles and distribute power from low amperage single phase circuits to higher-power 3-phase solutions.



	EPDU1016B	EPDU1116B	NEW EPDU1116B-SCH	EPDU1132B	NEW EPDU1132B-SCH	EPDU1216B	EPDU1232B	
Electrical	Nominal Voltage	230VAC			400VAC, 3PH			
	Input Circuit	16A			32A		16A, 3phase	32A, 3phase
	Input frequency	50/60 Hz						
	Input Connector	IEC-320 C20 200-240V Inlet	IEC 309 16A 2P+E	SCHUKO TYPE 16A	IEC 309 32A 2P+E		IEC 309 16A 3P+N+E	IEC 309 32A 3P+N+E
	Input Cord Length	2.5 m	3 m			2 m		
	Output Voltage	200-240VAC, 1PH						
	Output Receptacles	(8) C13	(20) C13 (4) C19	(14) SCHUKO , 45° orientation	(20) C13 (4) C19	(21) SCHUKO , 45° orientation	(36) C13 (6) C19	(30) C13 (12) C19
	Circuit Breakers	NA			2 X 16A 1-pole hydraulic-magnetic circuit breakers		NA	6X 16A 1-pole hydraulic-magnetic circuit breakers
Physical	Mount Style	Horizontal (19" rackmountable)			Vertical			
	Width	488mm	62mm					
	Height	44.4mm	902mm	1175mm	1506mm	1794mm		
	Depth	44.4mm						
	Housing material	Aluminum extrusion						
	Tool-less mounting	NA	Yes					
Environmental	Color	Black						
	Operating Temp	-5° to +45° C						
	Operating Humidity	5-95%RH, non-condensing						
	Elevation Operating/Storage	0-3 000 m / 0-15 000 m						
Regulatory	EMC	CE ,followed by standard EN55035, EN55032, EN55024						
	Safety	CE , TUV, followed by standard EN/IEC62368-1						
	Environment	RoHS, REACH						
Package	Rack Mounting Brackets	M6x16mm screw (4pcs), M6 cage nut (4pcs)	M5x10mm,self-tapping screw (4pcs), L type Bracket 2pcs (included screw)					
	Safety Sheet	included						
	Installations Instructions	included						
	Package Dimension	560*150*80mm	1320*160*110	1660*160*110	1950*160*110			
	Weight/shipping weight	0.58KG/1.18KG	2.2KG/2.98KG	1.94KG/2.84KG	3.58KG/4.36KG	4.3KG/5.5KG	3.08KG/4.28KG	5.14KG/6.2KG
Warranty	1year							

Easy Metered Rack PDUs

Easy Metered Rack PDUs provide real-time remote monitoring of connected loads. User-defined alarms warn of potential circuit overloads before critical IT failures occur.



		EPDU1016M	EPDU1116M	EPDU1132M	EPDU1216M	EPDU1232M	
Electrical	Nominal Voltage	230VAC			400VAC, 3PH		
	Input Circuit	16A		32A	16A, 3phase		
	Input frequency	50/60 Hz					
	Input Connector	IEC-320 C20 200-240V Inlet		IEC 309 16A 2P+E	IEC 309 32A 2P+E	IEC 309 16A 3P+N+E	
	Input Cord Length	2.5 m		3 m		2 m	
	Output Voltage				200-240VAC, 1PH		
	Output Receptacles	(8) C13		(18) C13 (3) C19	(20) C13 (4) C19	(21) C13 (3) C19	(18) C13 (6) C19
	Circuit Breakers	NA		2 X 16A 1-pole hydraulic-magnetic circuit breakers		NA	6X 16A 1-pole hydraulic-magnetic circuit breakers
Physical	Mount Style	Horizontal (19" rackmountable)			Vertical		
	Width	482mm			62mm		
	Height	44.4mm			902mm		
	Depth				44.4mm		
	Housing material	Aluminum extrusion					
	Tool-less mounting	NA			Yes		
User Interface	Color	Black					
	Local User Interface	LCD Display , language:English					
	Local User Control	1 Button for scroll/select/Reset			2 Buttons for scroll/select/Reset		
	Communication I/O	1 Network port , 1 Temperature/Humidity port					
Environmental	Remote Management Capabilities	http/https, SNMP V1,V2,V3					
	Operating Temp	-5° to +45° C					
	Operating Humidity	5-95%RH, non-condensing					
Regulatory	Elevation Operating/Storage	0-3 000 m / 0-15 000 m					
	EMC	CE ,followed by standard EN55035, EN55032, EN55024					
	Safety	CE , TUV, followed by standard EN/IEC62368-1					
	Environment	RoHS, REACH					
Package	Rack Mounting Brackets	M6x16mm screw (4pcs)、 M6 cage nut (4pcs)		M5x10mm,self-tapping screw (4pcs), L type Bracket 2pcs (included screw)			
	Safety Sheet	included					
	Installations Instructions	included					
	Package Dimension	560*150*80mm		1320*160*110		1660*160*110	
	Weight/shipping weight	0.68KG/1.32KG		2.5KG/3KG		3.72KG/4.48KG	
Accessory	EPDU-TH (need to be ordered separately)						
Warranty	1 year						

Easy Switched Rack PDUs

Easy Switched Rack PDUs provide advanced load monitoring combined with remote on/off switching control of individual outlets for power cycling.



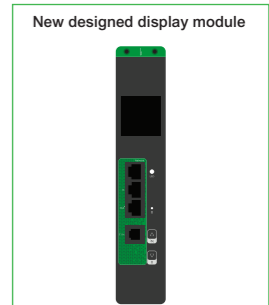
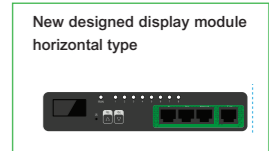
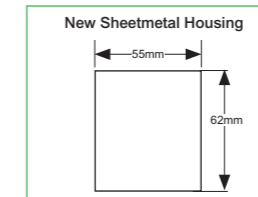
EPDU1016S



EPDU1116S



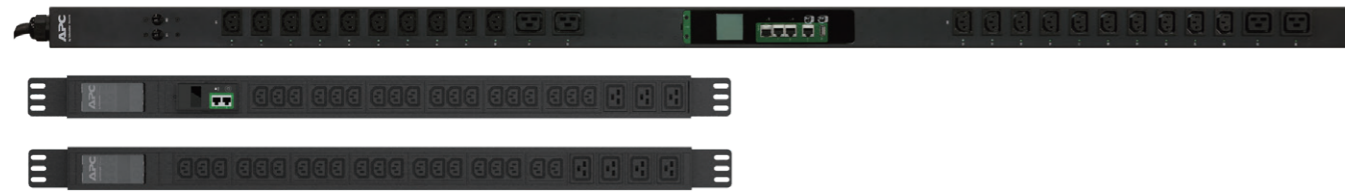
EPDU1132S



		EPDU1016S	EPDU1116S	EPDU1132S
Electrical	Nominal Voltage		230VAC	
	Input Circuit		16A	32A
	Input frequency		50/60 Hz	
	Input Connector	IEC-320 C20 200-240V Inlet	IEC 309 16A 2P+E	IEC 309 32A 2P+E
	Input Cord Length	2.5 m		3 m
	Output Voltage		200-240VAC, 1PH	
	Output Receptacles	(8)C13		(20) C13 (4) C19
	Circuit Breakers		NA	2 X 16A 1-pole hydraulic-magnetic circuit breakers
Physical	Mount Style	Horizontal (19" rackmountable)		Vertical
	Width	482mm		55mm
	Height	44.4mm		1738mm
	Depth	200mm		62mm
	Housing material		Sheetmetal	
	Tool-less mounting	NA		Yes
	Color		Black	
User Interface	Local User Interface		LCD Display , language:English	
	Local User Control		2 Buttons for scroll/select/Reset	
	Communication I/O		1 Network port , 1 Temperature/Humidity port , 2RS485 port sharing connection	
	Remote Management Capabilities		http/https, SNMP V1,V2,V3	
Environmental	Operating Temp		-5° to +45° C	
	Operating Humidity		5-95%RH, non-condensing	
	Elevation Operating/Storage		0-3 000 m / 0-15 000 m	
Regulatory	EMC		CE ,followed by standard EN55035, EN55032, EN55024	
	Safety		CE , TUV, followed by standard EN/IEC62368-1	
	Environment		RoHS, REACH	
Package	Rack Mounting Brackets	M6x16mm screw (4pcs)、 M6 cage nut (4pcs)		M5x10mm,self-tapping screw (4pcs), L type Bracket 2pcs (included screw)
	Safety Sheet			included
	Installations Instructions			included
	Package Dimension	560*220*80mm		1950*160*110mm
	Weight/shipping weight	2.8KG/3.6KG		7.3KG/8.5KG
Accessory			EPDU-TH (need to be ordered separately)	
Warranty			1 year	

What's NEW

Brand-new appearance

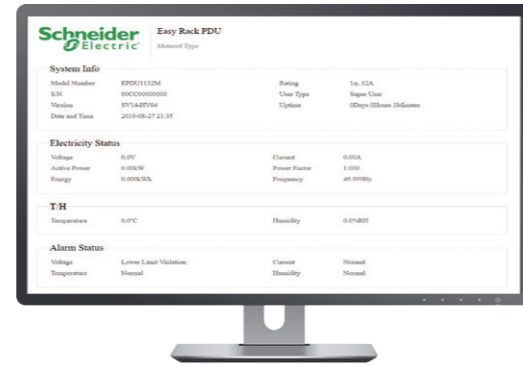


Ultra Light Weight

Reduce 50% weight thanks to Aluminum housing



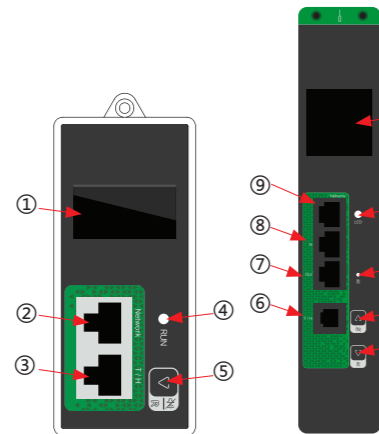
User Friendly Web Interface



New-designed Display Module

- Smart
- Easy for use
- Multifunctional

items	function
① LCD Display	display information about the Rack PDU.
② Network Port	Connects the Rack PDU to the network.
③ T/H Sensor port	Port for connecting a Temperature/Humidity Sensor.
④ Status LED	Indicates the working status.
⑤ Function Button	Press to page down and clear alarm. Press and hold for 10 seconds to reset settings to default.

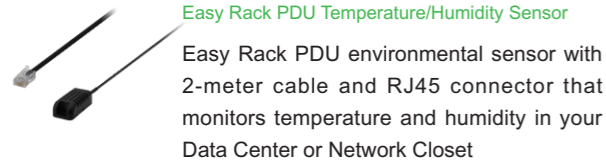


Item	Function	Description
①	LCD Display	View functional data
②	Run Indicator LED	Indicates the status when the power is on
③	Reset Button	Press and hold for 4 seconds to reset to the default settings
④	Up Function Button	Scroll for function status, Alarm shutoff
⑤	Down Function Button	Scroll for function status, Alarm shutoff/reboot (Press and hold for 10 seconds to reboot)
⑥	Temp/Humidity Port	Temp/Humidity Sensor connection port
⑦	Out	RS485 port sharing connection
⑧	In	RS485 port sharing connection
⑨	Network Port	Connect the Rack PDU to your network

Available Accessories

EPDU-TH

Easy Rack PDU Temperature/Humidity Sensor



Easy Rack PDU environmental sensor with 2-meter cable and RJ45 connector that monitors temperature and humidity in your Data Center or Network Closet

EPDU-BRKT

Easy Rack PDU Mounting Bracket one pair



Easy Rack PDU Bracket used for mounting 2 Easy Basic Rack PDUs or Easy Metered Rack PDUs on side of a NetShelter rack.

EPDU-PCG0B

Easy Rack PDU Power Cord, IEC309 (16A) to C20, 0.5m



Easy Rack PDU compatible cable connects an IEC 309-16A connector to an IEC C19 outlet. It can be used as a means to connect an Easy Rack PDU with IEC 309-16A connector to an APC single phase UPS .

EPDU-PCC0B

Easy Rack PDU Power Cord , Schuko to C20, 0.5m



Easy Rack PDU compatible cable connects a Schuko CEE 7 connector to an IEC C19 outlet. It can be used as a means to connect an Easy Rack PDU with Schuko connector to an APC single phase UPS .

Custom Easy Rack PDUs

Pre-configured or custom Easy Rack PDU designs to suit unique project and end-user requirements

BREAKING NEWS!

- Now enhanced Easy Rack PDU Customization Capabilities!
- Short Lead Time
 - Competitive price

Make Power Distribution and Custom Easy

The APC by Schneider Electric Easy Rack PDU is an easy-to-install, easy-to-use, easy-to-customize rack mount PDU which provide reliable power distribution to the equipment in the rack.

Ability to customize Rack PDUs and pre-configure them to meet your needs. Some options configured in as little as 2 weeks with a minimum order quantity of 50!

Length Pre-configuration of Input Cord

Lengthen or shorten the length of power cord. It is flexible for the customers choosing the right power cord length according to the actual situation of the data center site.

Lockable outlets

Custom Easy Rack PDU provides the ability to choose the lockable C13/C19 outlets. It can prevent the power line from loosening accidentally, which leads to power failure of the equipment.

Color Coding Rack PDUs

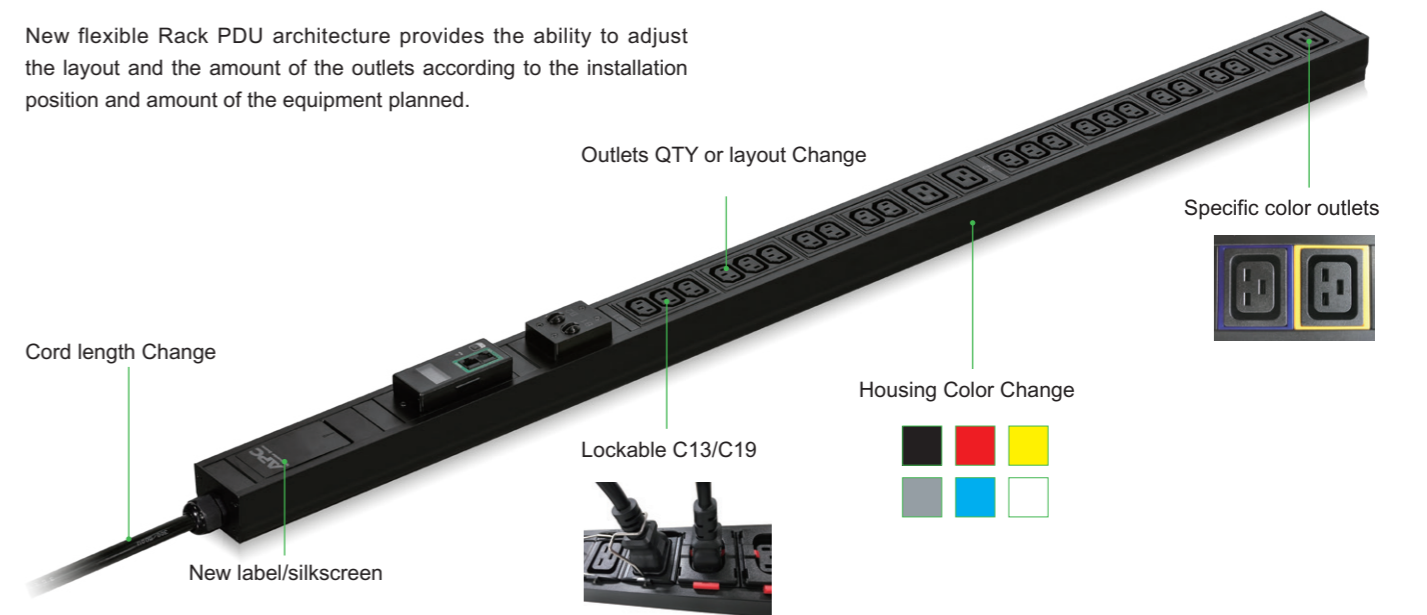
Including housing color change or the outlets surrounding color change. Color coding is proven to provide many benefits most importantly reducing human error, the major culprit of downtime.

Specific labels/silkscreen

Custom Easy PDU provides the ability to specify the labels/silkscreen according to customer needs.

Outlet layout and amount

New flexible Rack PDU architecture provides the ability to adjust the layout and the amount of the outlets according to the installation position and amount of the equipment planned.

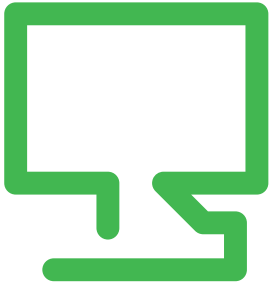


Addressing unique needs with the service you expect from Schneider Electric

- Dedicated team to assist from design to delivery
- Competitive pricing model
- Optimized lead times for special orders
- Fast turn around times for product modifications
- Global supply chain with Schneider Electric

For requests and more details e-mail: easycustomracks@se.com

Life Is On



Find out more:

The Rack PDU Selector is located at:
www.apc.com/tools/selector/pdu

Test drive a metered or switched Rack PDU at:
testdrive.apc.com

Schneider Electric

132 Fairgrounds Rd.
West Kingston, RI 02892
Phone: 1-877-800-4272

www.apc.com

May 2020

©2016 Schneider Electric. All Rights Reserved.
Schneider Electric | Life Is On, APC, InfraStruxure, StruxureWare, and NetShelter are trademarks and the property of Schneider Electric SE, its subsidiaries, and affiliated companies. All other trademarks are the property of their respective owners.
998-1165125_GMA-US_B