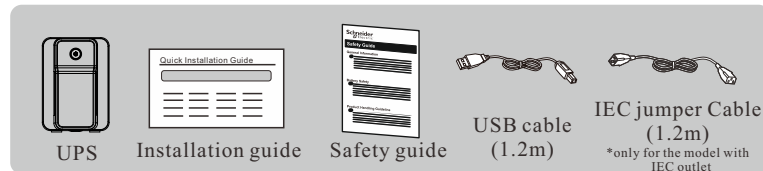


Quick Installation Guide

EN TME14815 - 11/2022

APC™ Back-UPS™ BXS Series - 500VA, 750VA, 950VA, 1200VA

Accessory



Place and Power On

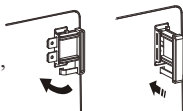
1. Place the Back-UPS to avoid:

- Direct sunlight
- Excessive heat
- Excessive moisture
- Excessive dust/dirt



For operation, please place the unit on the floor.

2. Connect the battery by pulling the battery handle up, and then pushing it into the unit.

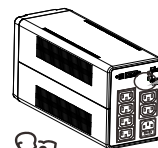


3. Connect equipment to the UPS. Avoid using extension cords.

4. Plug the Back-UPS power cord directly into a wall outlet, not into a surge protector or power strip.

5. Press the POWER button for 1 second and release the power button to turn on the UPS. After a long beep, the white indicator is on to confirm that the Back-UPS is ready to provide protection. Press the button for 2 seconds and release the power button to turn off the UPS.

6. DO NOT pull out the battery disconnecter during On Line Mode.



You could scan QR code from the back panel of the UPS to access the user manual for more details.



go2se.com/ref=BXS500MI



go2se.com/ref=BXS950MI



go2se.com/ref=BXS750MI



go2se.com/ref=BXS1200MI



go2se.com/ref=BXS950MI-GR



go2se.com/ref=BXS750MI-GR



go2se.com/ref=BXS1200MI-GR

Features

- A ON/OFF button with indicator
- B Input power cord
- C Battery backup and surge protected outlets
- D Battery connector
- E Input circuit breaker
- F AC power inlet with AC fuse (only for model with IEC socket)
- G USB data port
- H In/Out Ethernet surge-protected ports

