

IP Power 9850XX

User Manual



Version: 1.01A
Firmware Version: 1.13
Date Released: March 2020

Warning: Any changes made to this equipment without permission may cause damages to the device!

IMPORTANT NOTICE

1. IP Power 9850XX was designed for indoor use, we carry no responsibility for possible damages caused by outdoor use, especially in the rain.
2. Please use the power adapter provided by the dealer, we carry no responsibility for the possible damage from using power adapters not provided by us. .
4. Do not shake the IP Power 9850XX in any fashion
5. Please contact the dealer If IP Power 9850XX is not working properly.

Copyright © 2018 All rights reserved. No part of this publication may be reproduced, stored in a retrieval system, or transmitted in any form or by any means, electronic, mechanical, photocopying, recording or otherwise, without the prior written consent of us.
All trademarks and products mentioned in this document are the properties of us.

Table of Content

WELCOME	4
Introduction	4
Features :.....	5
Specification	6
Minimum System Requirements	6
Package Contents	6
INTERFACE DESCRIPTION	7
Outlook	7
Fuse replacement	8
SETTING UP YOUR DEVICE.....	9
Before Starting.....	9
Hardware Connection	9
Software Installation	10
WEB INTERFACE	15
Connect to your Device	15
Device name :	17
Information :	18
IO Control :	18
Network :	31
Application Settings :	33
System Setting :	44
OTHER WAYS TO CONTROL	48
FAQ :	51

Welcome

Introduction

IP Power 9850XX is a new generation of the Power Distribution Unit (PDU) & Remote Power Control (RPC) system.

With embedded web server and **HTTPS** protection , 9850XX supports higher grade security as working on Internet. User can control power easily and more safely through the web browser in Windows , Android or iOS system , like Internet Explorer (IE) , Google Chrome , Safari web browser or control through APP in Android or in iOS system .

With 4 buttons on device top, it allows user to direct control manually to each port ON/OFF with fingertip without web browser / APP , also allows remote control power on/off up to **4 separate** devices via network .

As support **SSL & SNMP**, user can use public email like Gmail / Hotmail / Yahoo Mail to get the email as the ON/OFF status changed . User can also **control** by **e-mail** without doing port forwarding / port mapping and search the other IP Device in webpage directly and quick .

9850XX supports **Auto Ping , Time Scheduler** which is more suitable for factory / commercial / office / home automation . User can get the device status in LOG information or in remote IP address which sent to get LOG message from 9850 (SYSLOG) . .

For system integrator, there are several popular developing tolls like HTTP/CGI command , **SSH/Telnet , SNMP** , Modbus TCP/IP & BACnet TCP/IP .

The various applications of the 9850XX includes:

Power Management, Server Management, Internet Controllable Timer, System Integration, Remote Power Control in Remote locations etc.

User Friendly . Convenience & Powerful ,

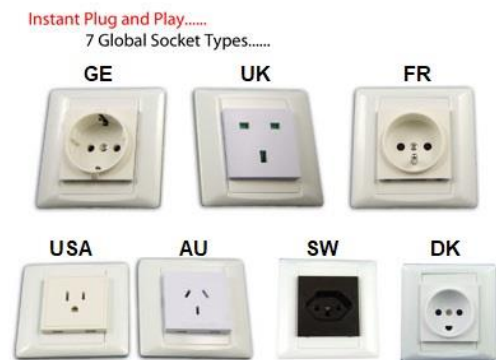


Product Overview

Features :

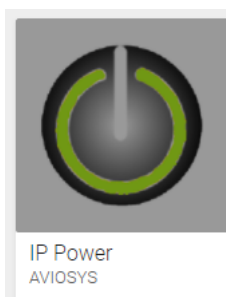
1. 4 port Remote power controller for power On, Off and Reboot.
 2. Web Server built-in design, directly control by web browser in Windows , **Android or iOS** system like Internet Explore (IE) , Google Chrome and so on .
 3. **4 Buttons Control** : Direct manual hardware control each outlet without working on Web browser .
 4. Support **HTTPS** , SSL , TCP/ IP , DHCP, DDNS , SMTP , **SSH/Telnet** , **SNMP** , **Modbus/TCP** and **BACnet/IP** .
 5. Power Surge protection & FUSE embedded in .
 6. **SYSLOG** : Support Log function & send to assign IP address
 7. Time Schedule - can pre-set a suitable time to turn power on / off automatically .
 8. **Auto Ping** for network control & segment management automatically
 9. High grade components for long stability and performance
 10. **Back Up** for quick setup for multiple devices like Time Schedule, Network Setting.
 11. Support public e-mail -- @gmail.com , @yahoo.com , @hotmail. cometc.
E-mail Control & Advice :
 - Receive e-mail with IPs device boot up.
 - **POP3 Control**—Control each outlet ON/OFF via E-mail. No need to do Port Forwarding .
 12. Specific software developed by Aviosys and provided free of charge :
 - SDK Available : HTTP Command
 - Windows software “ IP Power Center “ : Control Multiple Aviosys IP Power devices in one software
 - CNT software (Cross Network Technology)- allows user eliminate set up work on any Router without port forwarding , simply Plug & Play .
- Support MQTT protocol.**

13. 7 models for different power plugs available
 - IP Power 9850-FR - France (NF C61-31)
 - IP Power 9850-UK - United Kingdom (BS1363)
 - IP Power 9850-GE - German (Schuko)
 - IP Power 9850-AU – Australia (AS/NZS 3112)
 - IP Power 9850-US - USA (NEMA5-15R)
 - IP Power 9850-SW - Switzerland (SEV 1011)
 - IP Power 9850-DK - Demark (Type D)



15. Support APP for Android or iOS system :

- **Android APP** -- name “IP Power “ free download in Google Play .
- **iOS APP** -- name “IPPOWER+ “ free download in Apple App Store



IPPOWER+
Aviosys Inc

Specification

- Power input : 15A / 90-120VAC , 10A / 210-240VAC , 50-60Hz.
- Maximum loading of each output: **10Amp**
- Maximum of Total loading : **10Amp**
- Fuse protection : **10Amp**
- Dimensions: 200 x 140 x 50 mm (L x W x H)
- Weight: 990g
- Enclosure – Metal case in deep Gray color
- Operation **Temperature** : -10 ~ 60 °C or 14 ~104(°F)

Minimum System Requirements





- Network & Web Browser & Internet Connection
- Ethernet Cable & Power Cord




Package Contents

- 9850XX Unit
- Installation CD : include Manual with SDK and IP Search Software

Interface Description

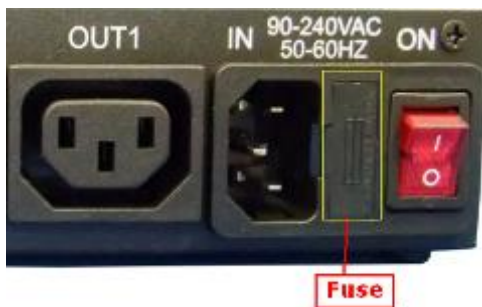
Outlook

	
<p>The above picture are model 9850AU /</p>	<p>9850FR</p>
	
<p>The above picture are model 9850GE /</p>	<p>9850UK</p>
<p>Buttons Control</p>	<p>There are 4 buttons . As outlet turn ON , the buttons light will be ON</p> <p>RESET function : Please keep pressing the two buttons #1 and #2 for 7 seconds and then release .Then you will hear a long beep sound and 3 short beep sound which show the reset Successfully . After reset , all the settings will be back to Default .</p>
<p>4 Outlets</p>	<p>There are 7 models</p> <ul style="list-style-type: none"> - 9850FR (NF C61-31) - 9850GE (Schuko) - 9850US (NEMA5-15R) - 9850-DK - 9850UK (BS1363) - 9850AU (AS/NZS 3112) - 9850SW (SEV 1011)
<p>Power input</p>	<p>In this socket, there is power input and Fuse socket .</p> <ul style="list-style-type: none"> ● The input power sends power to the 9850XX. ● Fuse : To prevent electrical surges from damaging the unit. The 9850XX comes with one spare fuse in the unit. <p>Fuse TYPE: U/C GFE 10A 250V (PF)</p>

	  
Power Switch:	The Power switch turns on the input power.
Network: LAN	LAN 10/100 Mbps network

Fuse replacement

1.) The fuse is located between the power switch and the power input plugs.

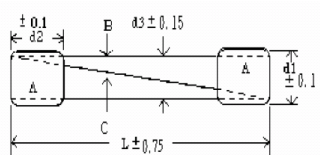


2.) Carefully remove the fuse holder with a flat screwdriver.



3.) The fuse can be purchased from electronic shops.

Specification : U/C GFE 10A 250V (PF)



Setting up your device

Before Starting

*Before setting up the device make sure of the following:

- 1.) All the package contents are all included if anything is missing please contact the dealer where the device was purchased from.
- 2.) Check the power input cable is working correctly.
- 3.) Check all cables to make sure there are no problems with it.

Hardware Connection

Before hardware connection, please make sure that there is no more than 2 network card (include dynamic network card) . If there are more than two network card in your PC. You may not get the IP address of 9850XX

The default setting for 9850XX to get IP is DHCP mode - get IP from Router. If user do not use router and connect the 9850XX to your PC directly or connect to HUB which have no DHCP function , the connection sequence of network cable and power cord are different . Please refer following procedure :

A. 9850XX ----- Router ----- PC (with Web browser)

- 1.) Connect the Ethernet cable (RJ45) to the 9850XX to your local area network.
- 2.) Then connect the power cable into the power input port of the 9850XX.
- 3.) Connect the device that you would like to control to the output plug on the top of the 9850XX.
- 4.) Switching the power source to ON status , this switch is located at the rear of 9850XX.
- 5.) After power on for around 45 seconds , there is a short beep sound for 9850XX which means the system reboot successfully

B. 9850XX ----- PC (with Web browser)

If you select to connect to PC directly , please connect the RJ45 cable to 9850XX after 1 minutes as power on of the 9850XX device . power hear the beep sound of 9850XX DO NOT connect the RJ45 as power ON

- 1.) Connect the power cable to 9850XX and press the power switch to ON

- 2.) After 9850XX power on for around 45 seconds , there is a short beep sound for 9850XX which means the system reboot successfully
- 3.) Then Connect the Ethernet cable (RJ45) to the 9850XX to your PC.

Notice : This is very important for this procedure . Please do not plug the network cable to 9850first under this connection . (without Router assigned the IP to 9850)

- 6.) Execute the software IPEDIT.exe to get the IP as 192.168.1.169
- 7.) Please make sure the IP address of you PC is also 192.168.1.X / XX/XXX or you may not log in the 9850XX wepage in 192.168.1.169

Software Installation

The **Media Link - IP Family CD** comes with the device , it has all the necessary software to run and setup the device.

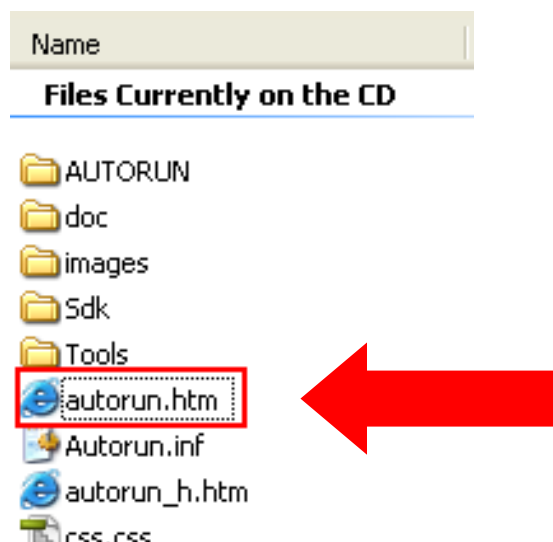
IP Power Software:

IP Edit (Required)

IP Power Center *(For multiple IP Power devices control purpose)

A. Installing Software

- 1.) Place the **Media Link-IP Family CD** into the CD/DVD Rom drive. The CD will auto run the file if user had pre-set, if not, please open the file "**autorun.html**"



- 2.) Click on the IP Power Section Bar
- 3.) Select the IP Power 9850XX
- 4.) All the available downloads for the 9850XX will be shown
- 5.) Download the required software – **IPedit.exe** - by clicking on the download button.



B. Network Connecting by LAN

LAN connect by IP search software “ **IPEDIT** ”

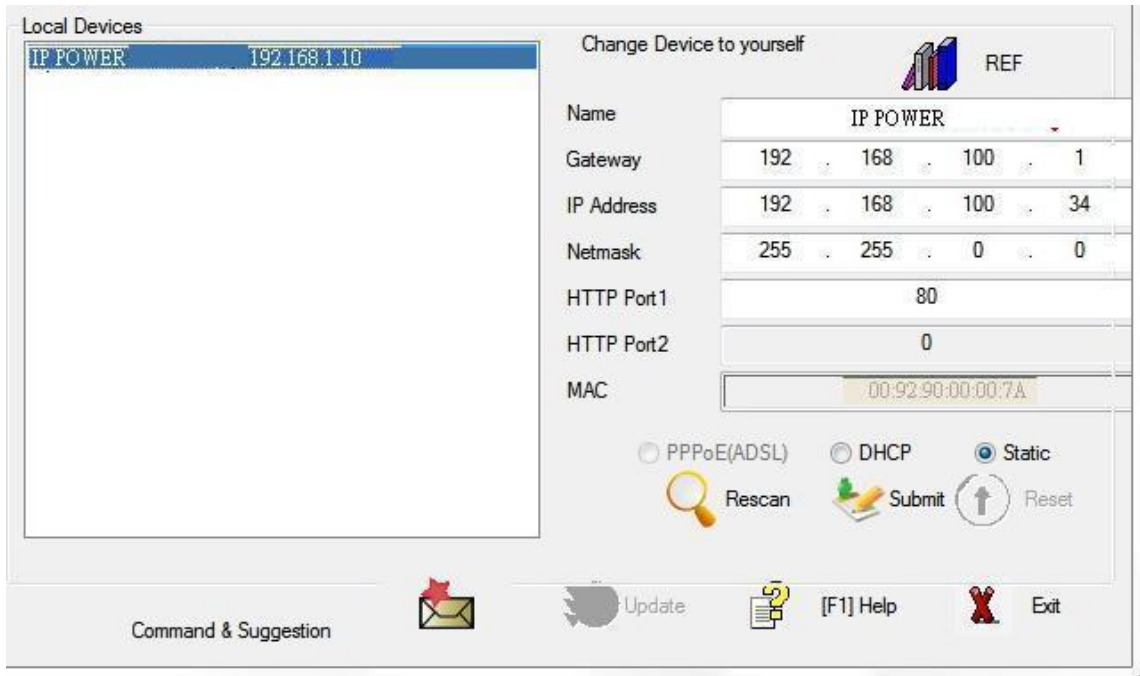


IP Edit is a search tool designed to search, configure, or access the IP Power 9850XX from a local network computer.

IP Power 9850XX Default Login / Password

Please use our IP Search tool “IPEDIT.exe “ to get the IP address of 9850XX .

- 1.) In the local devices section user will see user device shows up if connection is correct.



Default as DHCP status , 9850XX will auto get the IP address from user`s router by the suggest hardware connection as following :

9850XX ----- Router ----- PC (with Web browser)

If there is no assigned IP to 9850XX by the connection , the 9850XX will change to FIX IP address :

- **Default IP:** 192.168.1.168 (While this is no DHCP apparently)

If can't see the IP in the area of Local Devices of IPEDIT.exe. Please disable the Firewall and Anti Virus software temporally and try again.

- 2.) Select the 9850XX device and the device information will pop up on the right.
- 3.) Check to see that the gateway IP and the IP Address (9850XX) match user current network.

If not, type in the correct information, then hit the " Submit " button to save changes.

For example:

If user has the following information regarding the 9850XX and user network

User PC Network :

Computer IP Address: 192.168.1.122

Gateway: 192.168.1.1

Sub Net mask: 255.255.255.0

Port: 80

User 9850XX in IPEDIT :

9850XX IP Address: 192.168.100.34

Gateway: 192.168.100.1

Sub Net mask: 255.255.0.0

Port: 80

Since the IP Address of the 9850XX is : 192.168.100.34

User will need to make sure that the first 3 segments of user 9850XX IP Address must match the first 3 segments of user gateway IP.

First 3 Segment of Gateway Address: 192.168.1.X

So user new IP Address for the 9850XX should be: 192.168.1.XXX

New Network Information

9850XX IP Address: 192.168.1.26

Gateway Address: 192.168.1.1

Local Computer IP Address: 192.168.1.122

Sub Net mask: 255.255.255.0

Port: 80

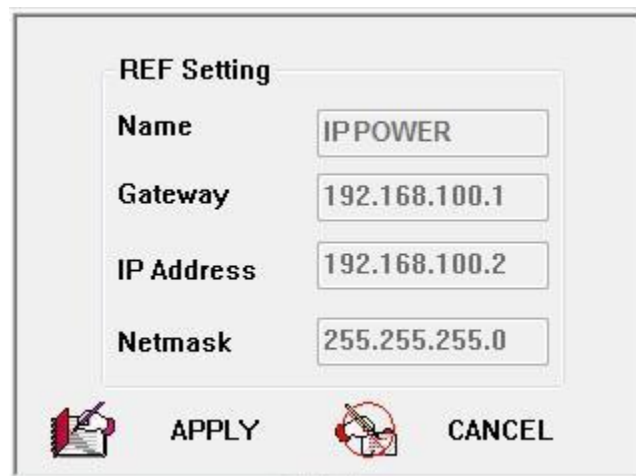
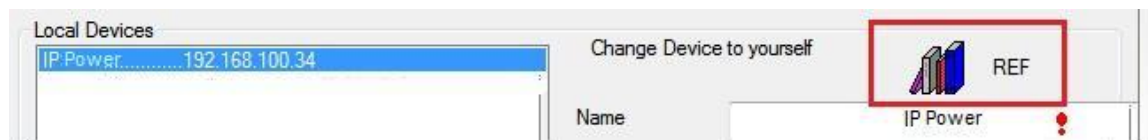
- 4.) Press the " Rescan " button to see if changes have been made.
- 5.) Double click on the device in the local device section and an IE web browser with the device login will pop up.
- 6.) Type in the default Login and IP Address to enter the device.

Default Login : admin

Default : 12345678

Notice :

* User can click " REF " in IEPDIT to auto search proper IP setting for 9850XX.
It will take few minutes to show the suggest wizard.



Please click " APPLY " as seeing the suggest wizard , click " yes " to ignore the remind message of IP being used and then type the Username and Password to change the IP setting.

Username : admin

Password : 12345678

Notice :

Segment : The first 9 digits of the IP Address .

EX: The IP of user PC is 192.168.100.122. If the " Local IP Address " at WiFi Info is 192.168.100.x (X can the value of 1~252) , user PC can get into the webpage of 9850XX .

Please press "Rescan " to search the router nearby again if can not see user router in the list.

C. Internet Setup

To connect the IP Power 9850XX on Internet, there are two ways

- Setup Port Mapping / Port Forwarding in your router. Please check your Router owner's manual .
- Use our own software " IP Power Center " : Please refer to the "IP Power Center " manual in the CD

D. Using IP Service

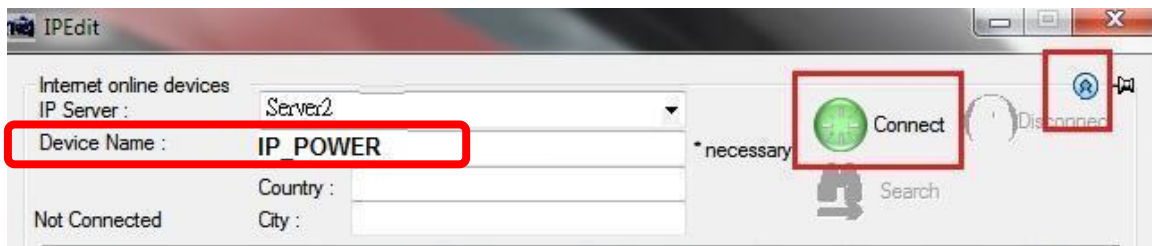
IP Service is a function which allows user to search for the device easily without having to remember long complicated IP address. Instead, if user know the device's name of user's IP Power device and user can easily find IP Address with IP Service. ***To log in the webpage of 9850XX on Internet , user still need to do the "Port Forwarding " in own router.***

Before using "IP Service " , please change the device name of user 9850XX to avoid similar name in Host Server.

IP Service & CNT Setting	
Enable	<input checked="" type="checkbox"/>
IP Service Server :	Server1 ▼
CNT Server List:	Server1 ▼
Device Name :	Manual-9850
Country :	Country
City :	City
Find Manual-9850 device on http://www.mypedit.com	
<input type="button" value="Apply"/>	

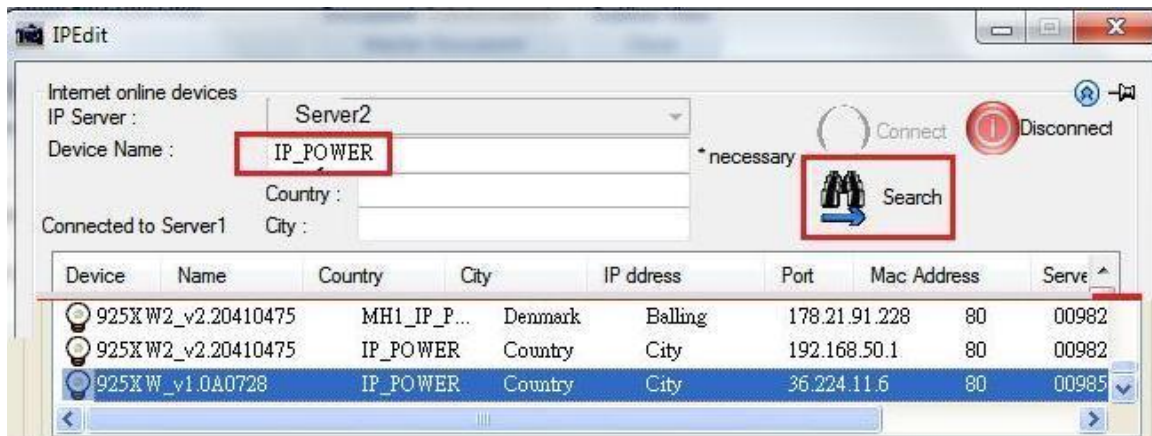
1.) Open IP Edit and select the server that user's 9850XX is designated to.

Hit the " Round Green color Connect button " on the top of IP Edit screen shot below.



- 2.) Then type in the 9850XX Name that user have selected for the device and press the Search button.
- 3.) Find user device and double click on the screen and a IE window will pop up connecting to user device. **User device must be Port Forwarded for the login screen to appear.*

EX: The 9850XX device name as IP_POWER , and user can search the device easily :



- 4.) After user has connected to user device, type in the Login and Password for user device

Web Interface

Connect to your Device

Once the 9850XX has been setup correctly, log into the device.

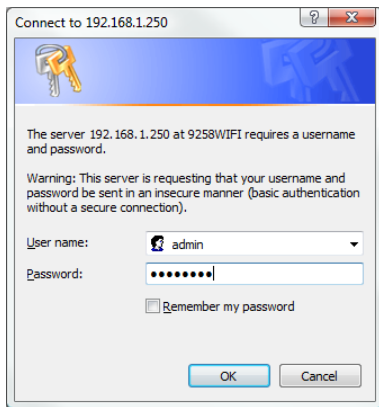
First Option

- 1.) Go to IP Edit to find the device that is being used
- 2.) Double click on the device linked and an IE window will appear with the loading screen

Second Option

- 1.) Open Internet Explorer type in the IP Address of the device followed by the : sign.
For example: http:192.168.122.188:9258
192.168.122.188 – IP Address

2.) Once you have typed in the IP address of the 9850XX and it is ready to be worked.



The default Username and Password for the 9850XX

Username : admin

Password: 12345678

The Control Console

The Right side Menu of the Web Interface for controlling the functionality and setup of the IP Power 9850XX.



The IP Power 9850XX Console consists of six main sections which will be explained in details below.

- **Device name & Hide or Display the left setting column** (for smart phone control)
- **Power Control** : Controls , Schedule & Ping.
- **Network** : Setting
- **Application** : Email , DDNS, Communication & IP Service
- **System** : Management, Information, SysLog & Firmware
- **Logout**

Device name :

This section show the device name



You can change the device name here : Application → IP Server → Device name
Change name " IP POWER 9850XX " as "Enjoy 9850XX "

Please change the name in English only and do not use symbol like !@#\$%^&*()_+

A. Device Name & Display / Hide the left setting section :

For Smartphone user to control 9850XX easily , user can select to show or to hide the left control section by pressing the blue area near device name for Smartphone control :

- With left control section :

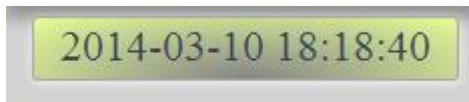


Without left control section :

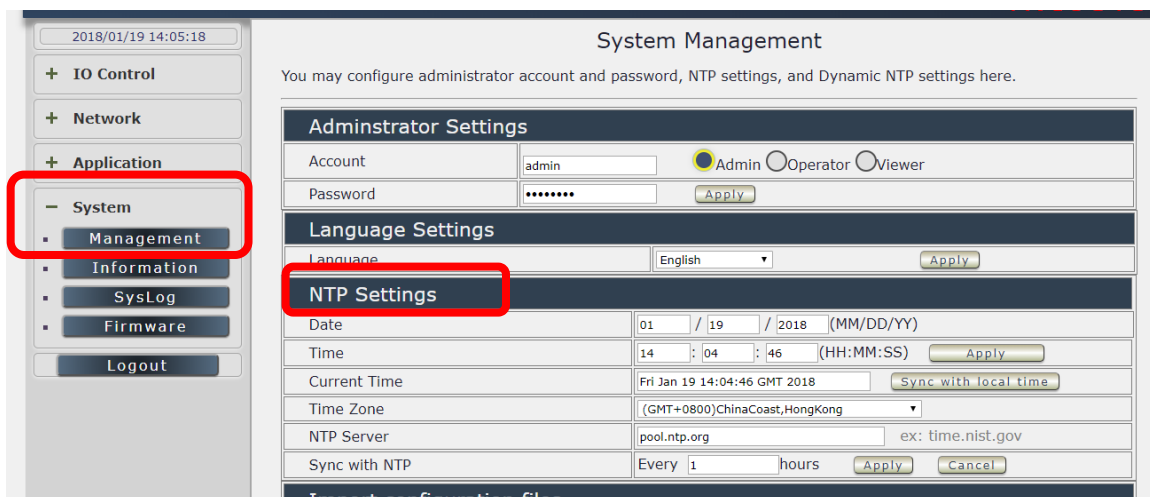


Information :

In this section, it shows Time at **Year – Month – Date** , **Hours : Minutes : Seconds** .



To setup the Time , Please go to “ System → Management → NTP Settings “ , please press “Apply” to save the new setting .



IO Control :

The IO Control Section allows you to directly / automatically control the outlets of the 9850XX as well as schedule Daily, Weekly, and Monthly power cycles.

There are five sections : Control , Schedule , Ping , Timeline and History.



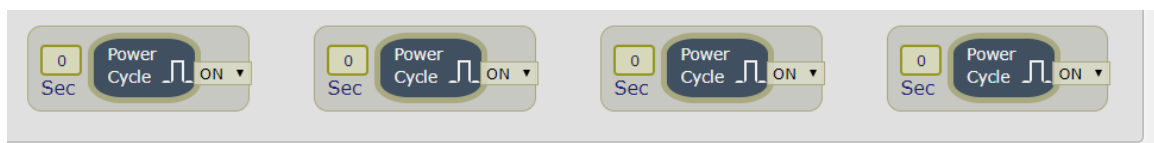
A. Control

There are 2 setting pages in this Section. One is “ Power Control “ and another one is “Advance Setup “

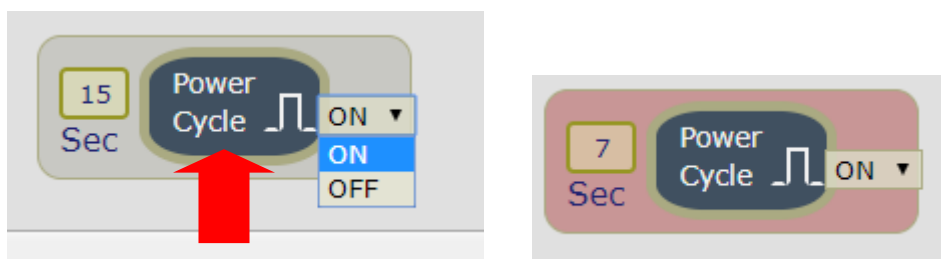
A-1. Power Control :

User can do the following 3 basic operation in this page :

1. Manual control each port ON or OFF directly by pressing the power sign.
2. Power Cycle control : Manually Control the relay delay to turn ON / OFF . The relay cycle time can be set from 1 to 9999 seconds



User can setup the time and the final status in power cycle as ON / OFF



For example : (sec = seconds)

- Original Outlet as “ OFF “ , select final status as “ ON “ & fill 15sec :
After press power cycle button, the outlet will turn OFF for 15 seconds and then turn ON .

OFF (15 sec) → ON

- Original Outlet as “ ON “ , select final status as “ ON “ & fill 10sec :
After press power cycle button, the outlet will turn OFF for 10 seconds and then turn ON .

ON -- > OFF (10 sec) → ON

- Original Outlet as “ OFF “ , select final status as “ OFF “ & fill 8 sec :
After press power cycle button, the outlet will turn ON for 8 seconds and then turn OFF .

OFF → ON (8 sec) → OFF

- Original Outlet as “ ON “ , select final status as “ OFF “ & fill 5 sec :
After press power cycle button, the outlet will be ON for 5 seconds and then turn OFF .

ON (5 sec) → OFF

Notice :

As use Latching Relay in IP 9850 , there is no difference of **Normal Closed Relay** (NC) or **Normal Open Relay** (NO) . As there is no power for 9850 device , **the relay status will keep as it is at ON or at OFF .**

- 3 Group Setting : User can control more than one outlet by press the right side “Apply “ button . For safety concern , each port of 9858MT will turn ON or OFF one after one .



- Apply : Setup the ON/OFF by the buttons status .
- Inverter : Change the outlet status from ON to OFF ,or form OFF to ON by one button contorl.

A-2 Advance Setup :

User can do the following 4 advance operation in this page :

- Port Name setting

User can name each power by click the name above the power button

The number of character is max. 12 characters and Please change the name in English only and do not use symbol like !@#\$%^&*()_+

Port Name Setting			
Outlet1	Outlet2	Outlet3	Outlet4
Jason	tony	power3	power4

- Notification Setting :

Notification Setting				
Name	Jason	tony	power3	power4
Forbidden off manually	<input type="checkbox"/>	<input type="checkbox"/>	<input type="checkbox"/>	<input type="checkbox"/>
Forbidden Power cycle	<input type="checkbox"/>	<input type="checkbox"/>	<input type="checkbox"/>	<input type="checkbox"/>
Email Alerts	<input type="checkbox"/>	<input type="checkbox"/>	<input type="checkbox"/>	<input type="checkbox"/>
Beep Alert	<input type="checkbox"/>	<input type="checkbox"/>	<input type="checkbox"/>	<input type="checkbox"/>
Default Power Status	OFF ▼	OFF ▼	OFF ▼	OFF ▼

Apply

- Forbidden off manually :
Stop to control ON/OFF in the webpage manually .
9850 will follow control by HTTP/CGI command or by Schedule setting.

- Forbidden Power cycle :
Stop to “power cycle” control in the webpage manually . 9850 will follow control by HTTP/CGI command or by Schedule setting.

For example :

Forbidden outlet #1 & power cycle # 2 . The manual control button will be grey and can not control as following :



- E-mail Alarm Setting :

User can enable /disable the e-mail alarm here. Please refer the page 33 to setup the email information in “Application “ → Email .

The e-mail alarm section allows 9850XX to notify user by following situation :

- Receive E-mail with IP information & MAC Address as 9850XX device boot up.
- Receive E-mail as ON/OFF status change in each output .
- Beep Alert : User can setup the operation beep (short time beep) sound here.
- Default Power Status: The control section allow user to set the power status on ON or OFF or LAST when the device power Rebooted . The output will be same status as choose LAST before the device power turn off. To save the setting here , please click “Apply “ button .

Note : Please change the name in English only and do not use symbol

like !@#\$%^&*()_+

- Shutdown on LAN & Wake On Lan setting :

Shutdown On Lan Settings				
Name	Jason	tony	power3	power4
Delay Time	60 Seconds	60 Seconds	60 Seconds	60 Seconds

Apply

Wake On Lan Settings	
Control Outlet	MAC
Power1	000000000000 Send
Power2	000000000000 Send
Power3	000000000000 Send
Power4	000000000000 Send

Apply

- Shutdown on LAN

9850XX can be used to safely turn off the **WINDOWS or LINUX** system through Network. With this feature you can remotely shutdown any system which that is connected to the IP Power 9850XX through normal Windows / LINUX shut down procedure. Before operating the software shutdown function it is essential to install our software.

Please check the software in the SDK section of package CD .
File name : Shutdown_On_LAN

NOTE : The delay time setup in this section is for “ Shutdown ON LAN “ procedure . Not for outlet ON/OFF function

- Wake up on LAN

This is a application for PC / Server / Main board which had been enable the “ WAKE ON LAN “ function in own setting . User need to know the MAC address of the PC /Server to be wake up .

Schedule List

1
Duration Mode

☐ Once
 ☐ Every Week
 ☒ Every Day

Date: From to

Time : : (Hr:Min:Sec)

Schedule power action ☒

Jason ☒

SOL

Relay-ON
 Relay-OFF
 Relay-CYCLE
 WOL
 SOL

tony ☒

SOL

power3 ☒

Relay-OFF

power4 ☒

Relay-OFF

Apply No.1 Sch

Delete

Ping List

Global Ping Base Setting
Apply

Ping Interval	<input type="text" value="5"/> Sec.	Response Time Out	<input type="text" value="900"/> ms.
Ping After Action Delay	<input type="text" value="5"/> Sec.	Action Max repeat times	<input type="text" value="1"/> (0=non stop)

Conditional Mode

☐ Single
 ☒ OR
 ☐ And

IP & Host Name	Failed times then action	Repeat	
<input type="text" value="www.baidu.com"/> Check	<input type="text" value="03"/>	<input type="text" value="Stop"/>	Rule No1
<input type="text" value="www.sony.com"/> Check	<input type="text" value="03"/>		

Ping failure action ☒

Jason ☒

Relay-OFF

Relay-ON
 Relay-OFF
 Relay-CYCLE
 WOL
 SOL

tony ☒

Relay-OFF

power3 ☒

Relay-OFF

power4 ☒

Relay-OFF

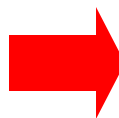
Apply Rule

Delete

B- 1 Schedule

In this section , user can see the setting schedule list first up to 29 rules . To setup each schedule , please press “ Schedule Setting “ , then user can get the “ Schedule List “ page as following :

Please click the button to switch between “ Schedule Setting “ & “ Schedule list “ :



Schedule Setting

WOL=Wake-On-Lan, SOL=Shutdown-On-Lan

No.1

On 0000/00/00

Schedule
 Action at 00:00:00

Schedule List

1
Duration Mode

☒ Once
 ☐ Every Week
 ☐ Every Day

The schedule allows you to control the power outlet or turn ON / OFF/ RESET at assigned time

- Adding a Scheduled Event

1. Select the Action Duration :

There are 3 setting - Once , Every Day . Every Week

2. Select a Specific Date Range where the device will repeat the desired actions during the time specified.

1
Duration Mode

☐ Once
 ☒ Every Week
 ☐ Every Day

Weekly select:

☐ Sunday
 ☐ Monday
 ☒ Tuesday
 ☐ Wednesday
 ☒ Thursday
 ☐ Friday
 ☐ Saturday

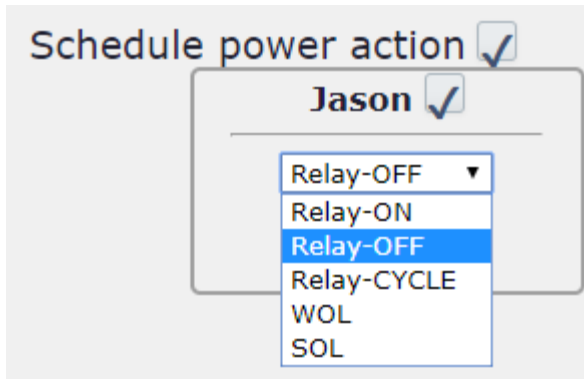
Date: From to

Time 00
 Schedule

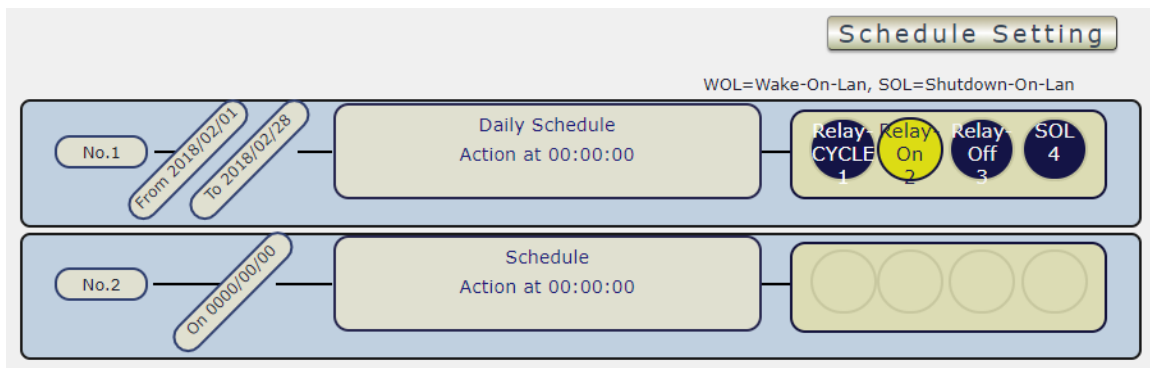
Jan 2018							February 2018							March 2018						
Su	Mo	Tu	We	Th	Fr	Sa	Su	Mo	Tu	We	Th	Fr	Sa	Su	Mo	Tu	We	Th	Fr	Sa
	1	2	3	4	5	6					1	2	3					1	2	3
7	8	9	10	11	12	13	4	5	6	7	8	9	10	4	5	6	7	8	9	10
14	15	16	17	18	19	20	11	12	13	14	15	16	17	11	12	13	14	15	16	17
21	22	23	24	25	26	27	18	19	20	21	22	23	24	18	19	20	21	22	23	24
28	29	30	31				25	26	27	28				25	26	27	28	29	30	31

3. Select the Time Period.

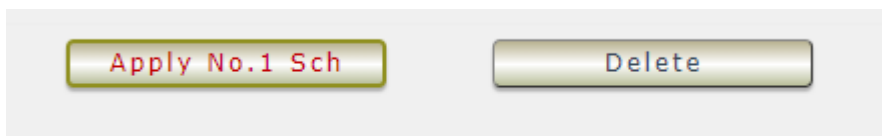
4. Choose the Action : Enable power # by clicking in the small square to mark “ v “ , and select one from the power action of OFF/ON/RESET as you need. .



Once the scheduler has been Set Up , hit the “ ADD No.:X Power Schedule “ button and you will see your setting located on the bottom of the Action section .



- **Apply / Edit a Schedule Event :**



Please select the Rule you want to edit in Scheduler Table. , Change the setting like Duration , Date , Time and Action. Then Press “Apply Np. X Sch “ button to confirm the setting and you will see the page refresh and new setting display in Scheduler list

- **Delete** - Click “ Delete “ button to remove a rule from the list .

B- 2 Ping

The Ping function allows the device to Ping an IP Address automatically to act as a watchdog to make sure the device getting Ping and working properly. Please Click the button to switch between “ Ping Setting “ & “ Ping List “. User can hide the setting section by press “ Ping List “. There are 4 rules for Ping .

- Ping List Page :



- Ping Setting Page :

The screenshot shows the 'Ping Setting' page. It has a 'Global Ping Base Setting' section with fields for 'Ping Interval' (5 Sec), 'Response Time Out' (900 ms), 'Ping After Action Delay' (5 Sec), and 'Action Max repeat times' (1 (0=non stop)). Below is a 'Conditional Mode' section with radio buttons for 'Single', 'OR' (selected), and 'And'. A table shows 'IP & Host Name' (www.baidu.com, www.sony.com) and 'Failed times then action' (00). A 'Ping failure action' checkbox is present. At the bottom, there's a 'Ping 3' section with a flowchart similar to the Ping List page. A red arrow points to the 'Ping List' button at the top right.

There are 3 sections of the setting area :

1. Setting Rule Numbers :

User can click to select different rules numbers at the right side button “ Rule No: X “ as following pictures . There are 29 rules available.

Ping List

Global Ping Base Setting			
Apply			
Ping Interval	5 Sec.	Response Time Out	900 ms.
Ping After Action Delay	5 Sec.	Action Max repeat times	1 (0=non stop)
Conditional Mode <input type="radio"/> Single <input checked="" type="radio"/> OR <input type="radio"/> And			
IP & Host Name		Failed times then action	Repeat
www.baidu.com	Check	03	Rule No1
www.sony.com	Check	03	

2. Ping Base Setting :

Ping List

Global Ping Base Setting			
Apply			
Ping Interval	5 Sec.	Response Time Out	900 ms.
Ping After Action Delay	5 Sec.	Action Max repeat times	1 (0=non stop)

- Ping Interval : The number of seconds (Sec.) between each ping .
- Respond Time Out : The number of milliseconds (= ms.) of the device will wait for a response from the Pinged device if no ping is detected within this time it will be considered a Ping failure.
- Ping After Action Delay : After ping finished , do the action after setting seconds (Sec.)
- Action Max. repeat times : Set the times to execute the Ping Failure action
Set 0 means action non stop - Keep action & no limit times.

As setting finished , please click “ Apply “ to save the setting in this area , the webpage will refresh and user can see the final setting result. Ten different set up rules for different port .

3. Other Setting :

The setting here is for each rule .

Conditional Mode			
<input type="radio"/> Single <input checked="" type="radio"/> OR <input type="radio"/> And			
IP & Host Name		Failed times then action	Repeat
www.baidu.com	Check	03	Stop ▼
www.sony.com	Check	03	

Rule No1

- Logic Mode :

User can select the action activate by one / two IP Host failure or either one fail

- Single : Execute Action by one IP Host failure .
- OR : Execute Action by either one IP Host failure as setting 2 pcs IP Host
- And : Execute Action by both IP Host failure as setting 2 pcs IP Host

Single : 9858MT will Ping one IP address. As the IP fail times reach to the setting times .
Action (ON/OFF/RESET) will be activated .

Conditional Mode ☒ Single ☐ OR ☐ And

IP & Host Name	Failed times then action	Repeat
www.google.com <input type="button" value="Check"/>	03	Stop

Ping failure action ☐

Ping 1

WOL=Wake-On-Lan, SOL=Shutdown-On-Lan

```

graph LR
    Start([No.1Ping every 5sec]) --> Baidu[www.baidu.com]
    Start --> Sony[www.sony.com]
    Baidu --> BaiduFail{0.9sec Timeout Ping 3 times}
    Sony --> SonyFail{0.9sec Timeout Ping 3 times}
    BaiduFail --> EitherFail{Either Fail}
    SonyFail --> EitherFail
    EitherFail --> Seq1((1))
    Seq1 --> Seq2((2))
    Seq2 --> Seq3((3))
    Seq3 --> Seq4((4))
    Seq4 --> Delay[after 5sec]
    Delay --> Repeat([Repeat 1Times])
    Repeat --> Start
  
```

OR : 9858MT will Ping 2 IP address. Either one IP fail times reach to the setting times.
Action (ON/OFF/RESET) will be activated .

AND : 9858MT will Ping 2 IP address. Both IP fail reach to the setting times.
Action (ON/OFF/RESET) will be activated.

Conditional Mode ☐ Single ☒ OR ☐ And

IP & Host Name	Failed times then action	Repeat
www.google.com <input type="button" value="Check"/>	03	Stop
www.sony.com <input type="button" value="Check"/>	03	Stop

Ping failure action ☒

Ping 1

Jason ☒ Relay-OFF

tony ☒ Relay-OFF

power3 ☒ Relay-OFF

power4 ☒ Relay-OFF

- IP & Host Name : Input the IP Address (ex: 122.116.123.138) or Host - web address (ex: www.google.com) user would like to Ping.
User can use the “ **ping test** ” bottom to check the address valid or not
- Failed times then action : Setup the ping failure times for 9858MT to execute the setup ON/OFF / Reset action of setting .
- Repeat : After the ON/OFF/Reset action , user can setup the Ping action to keep ping (Continue) or to Stop Ping (Stop) .
- Enable Ping function : In the selected Rules number , please select the outlet number power to activate as ping fails and then press “ Apply Rule Action ” button to confirm the setting .

- Ping failure action :

When the number of Ping Failures times have been reached. The device can be set to “ ON , OFF or Reset “ function

Reset: Can set up the time gap from OFF to ON. The “ Sec “ section is for action as Reset only.



Ping failure action ☒

Jason ☒

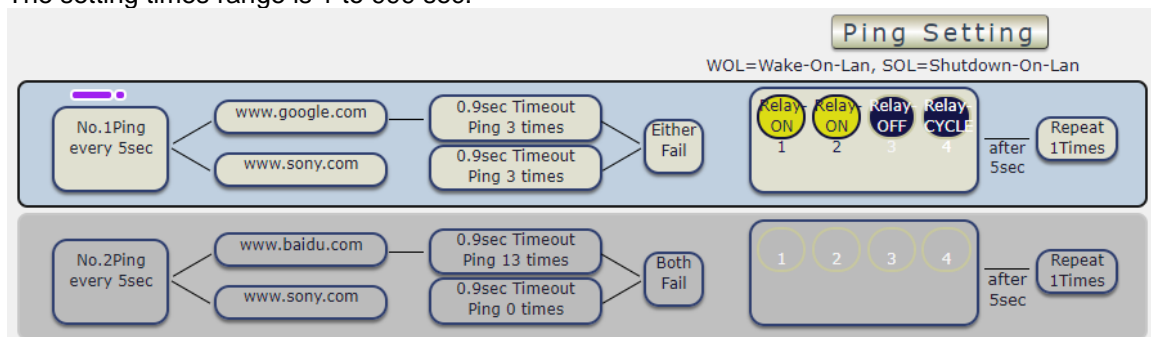
tony ☒

power3 ☒

power4 ☒ sec.

Ping 1

The setting times range is 1 to 999 sec.



Select the number of Ping Failures that user prefer to do before the action is activated.

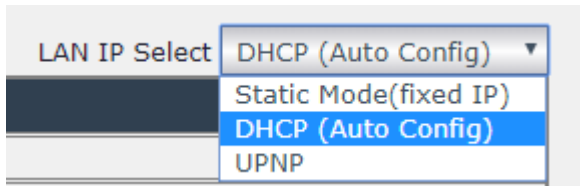
EX: Result of setting

Network :

There are 3 sections in this port : LAN Network , DNS setting and Port setting

LAN Network Settings :

The network status is connected by ether cable with RJ45 connector . There are 3 network connection way : Static IP / DHCP / UPNP



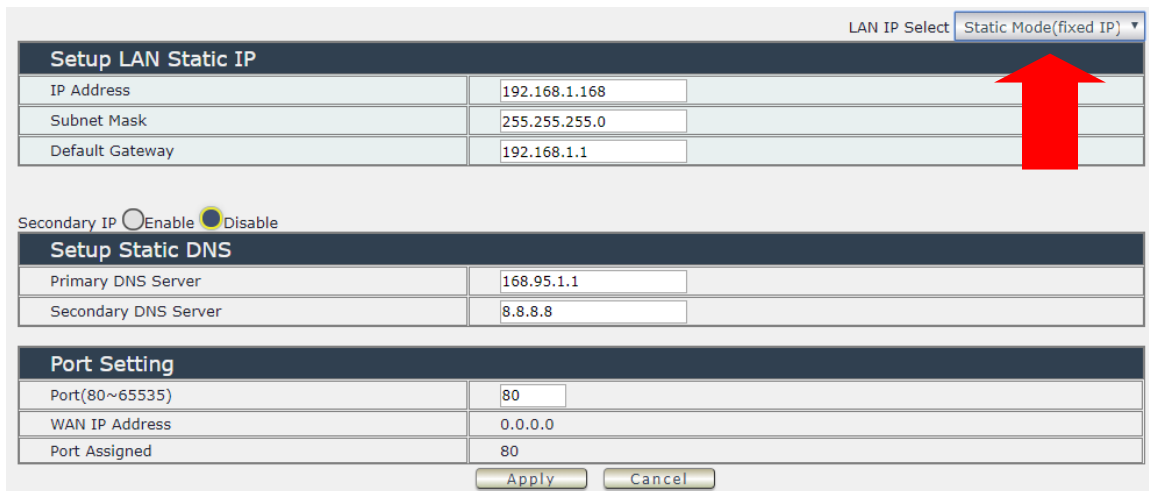
A screenshot of a web interface showing a dropdown menu labeled 'LAN IP Select'. The menu is open, displaying three options: 'DHCP (Auto Config)' (selected), 'Static Mode(fixed IP)', and 'UPNP'.

A. STATIC (fixed IP) :

Setup IP address , DNS and Port manually. This allows the 9858MT to obtain an IP Address automatically from user's server connected to Internet. Recommended for users who need to control through Internet.

Please do fill up the correct gateway / port for login from Internet .

Please do fill up the correct DNS server for sending / receiving email (alarm) .



A screenshot of a web interface for configuring LAN settings. The 'LAN IP Select' dropdown is set to 'Static Mode(fixed IP)'. The page is divided into three sections: 'Setup LAN Static IP', 'Setup Static DNS', and 'Port Setting'. A red arrow points to the 'Static Mode(fixed IP)' dropdown.

Setup LAN Static IP	
IP Address	192.168.1.168
Subnet Mask	255.255.255.0
Default Gateway	192.168.1.1

Secondary IP ☐ Enable ☒ Disable

Setup Static DNS	
Primary DNS Server	168.95.1.1
Secondary DNS Server	8.8.8.8

Port Setting	
Port(80~65535)	80
WAN IP Address	0.0.0.0
Port Assigned	80

Apply Cancel

B. DHCP Mode :

Obtain IP address via DHCP mode . setup the DNS and port

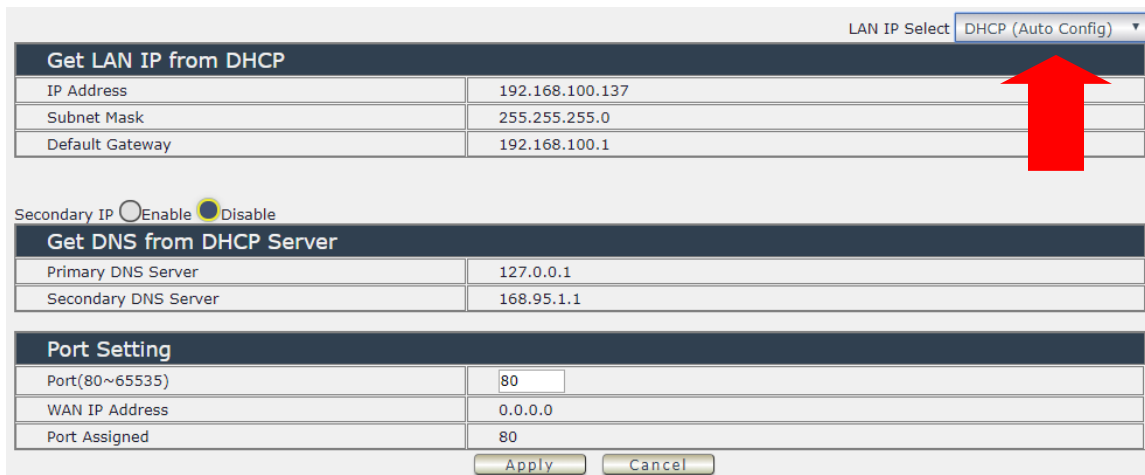
This allows the 9858MT to obtain an IP Address automatically from user's server connected to Internet. Recommended for non- advance users.

User can only revise the Host Name under DHCP mode. This is also the default setting for fast LAN connection solution.

As the IP from DHCP Service of user's router will be changed by router . 9858MT will remember last IP of 9858MT assigned by user's router in "Last DHCP state " for information

Please do fill up the correct gateway / port for login from Internet .

Please do fill up the correct DNS server for sending / receiving email (alarm) .



LAN IP Select **DHCP (Auto Config)**

Get LAN IP from DHCP	
IP Address	192.168.100.137
Subnet Mask	255.255.255.0
Default Gateway	192.168.100.1

Secondary IP ☐ Enable ☒ Disable

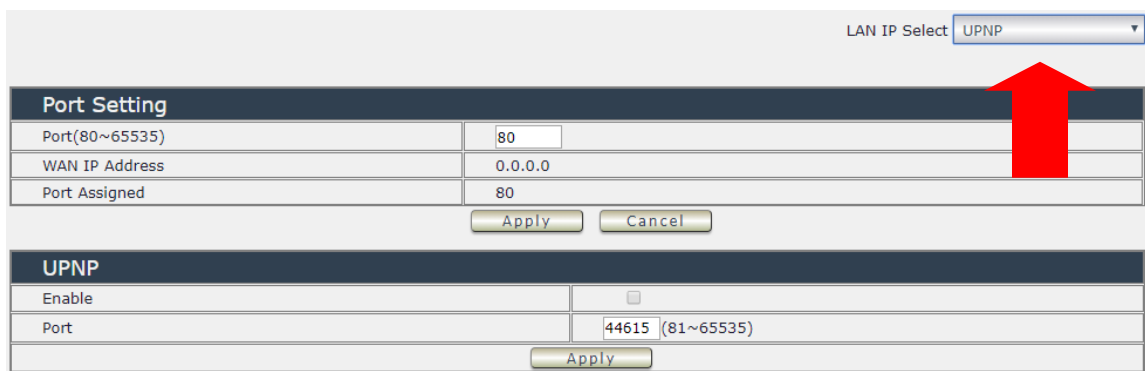
Get DNS from DHCP Server	
Primary DNS Server	127.0.0.1
Secondary DNS Server	168.95.1.1

Port Setting	
Port(80~65535)	80
WAN IP Address	0.0.0.0
Port Assigned	80

C. UPNP :

With UPNP function , user can log in webpage through Internet without setting Port forwarding / port mapping in your router . No matter use " FIX IP " or " DHCP " , user can enable this UPNP function .

Notice : It support to pass through one router and may not work as 9858MT under multiple routers.



LAN IP Select **UPNP**

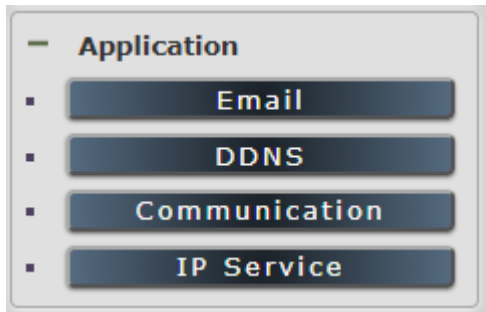
Port Setting	
Port(80~65535)	80
WAN IP Address	0.0.0.0
Port Assigned	80

UPNP	
Enable	<input type="checkbox"/>
Port	44615 (81~65535)

Please do fill up the correct gateway / port for login from Internet .

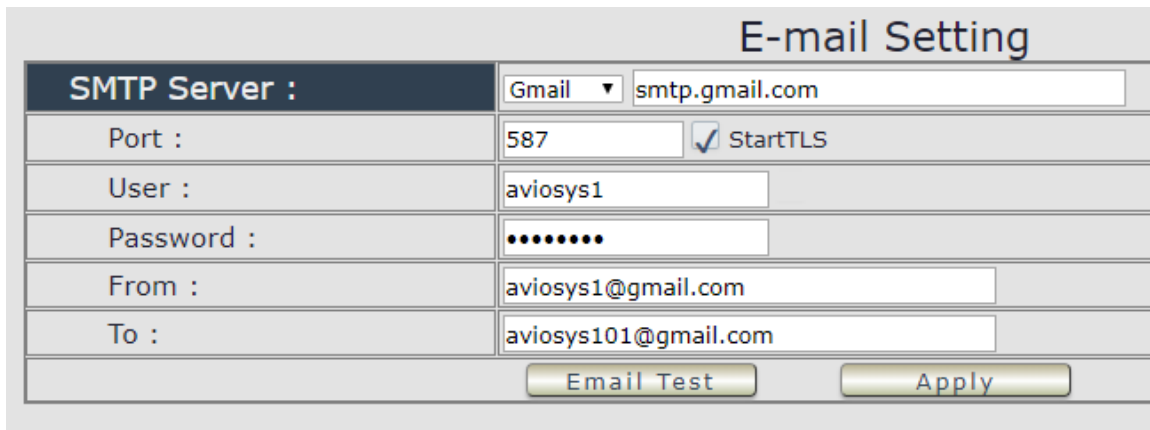
Please do fill up the correct DNS server for sending / receiving email (alarm) .

Application Settings :



A. Email

There are 2 sections in this part -- E-mail setting and POP3 Control :

A screenshot of the "E-mail Setting" form. The title "E-mail Setting" is at the top right. The form contains several fields: "SMTP Server :" with a dropdown menu set to "Gmail" and a text field containing "smtp.gmail.com"; "Port :" with a text field containing "587" and a checkbox labeled "StartTLS" which is checked; "User :" with a text field containing "aviosys1"; "Password :" with a text field containing ten dots; "From :" with a text field containing "aviosys1@gmail.com"; and "To :" with a text field containing "aviosys101@gmail.com". At the bottom right, there are two buttons: "Email Test" and "Apply".

● Email Setting :

User can get e-mail advice as one of the following situation happen :

- Receive E-mail with IP information & MAC Address as 9858MT device boot up.
- Receive E-mail as ON/OFF status change in each output .

Notice : To send out the e-mail successfully , please double check the setting of user DNS . (Network → DNS setting)

The 9858MT allows user to send from public e-mail account , such as @gmail or @hotmail or @yahoo.com

- **SMTP Server:** This is the mail server of sender .

If user select @gmail or @hotmail account as SMTP Server , 9858MT will fill the SSL & Port automatically

- **Port** : This is the port of SMTP Server. Most common port to send out e-mail is port 25
- **Start TLS** : It depends on the inquire of the email server to enable or disable this inquire .
As use Gmail account , please enable this function .
- **User** : Login for the e-mail address . Ex: 9858MT@gmail.com
- **Password**: Password for the e-mail address. EX : 12345678
- **From** : Mail sender address to send the E-Mail out . Ex.: 9858MT@gmail.com
- **To** : Mail receiver address to get the E-Mail in Ex.: 9223@hotmail.com
- E-mail test : Can help to check if the e-mail setting works.
- Apply : To store the setting in this section .

For example :

1. Get Email alarm as outlet changed :

Outlet1	Outlet2	Outlet3	Outlet4
Jason	tony	power3	power4

Name	Jason	tony	power3	power4
Forbidden off manually	<input type="checkbox"/>	<input type="checkbox"/>	<input type="checkbox"/>	<input type="checkbox"/>
Forbidden Power cycle	<input type="checkbox"/>	<input type="checkbox"/>	<input type="checkbox"/>	<input type="checkbox"/>
Email Alerts	<input checked="" type="checkbox"/>	<input checked="" type="checkbox"/>	<input checked="" type="checkbox"/>	<input checked="" type="checkbox"/>
Beep Alert	<input checked="" type="checkbox"/>	<input checked="" type="checkbox"/>	<input checked="" type="checkbox"/>	<input checked="" type="checkbox"/>
Default Power Status	ON	ON	OFF	OFF

● POP3 Control

User can control each port turn ON or turn OFF by e-mail. The command format is limited .

Please enable the function first .

POP3 Control <input checked="" type="checkbox"/> Enable	
POP3 Server :	Gmail ▼ pop.gmail.com
From :	aviosys@gmail.com
Port :	110
User :	aviosys1
Password :	*****
Tag :	Test
Interval(Minute) :	2
Mail Number :	100
CTRL Format :	<input checked="" type="radio"/> Subject <input type="radio"/> Body
Apply	
<p>Example:</p> <p>E-Mail Test: yourmail</p> <p>Subject: IPPOWERCTRL:TAG=Test;POWER1=OFF;POWER2=OFF;POWER3=OFF;POWER4=OFF</p> <p>Body: </p>	
Submit	

Settings Section :

To set up 9858MT be controlled by e-mail , user need to know the both **sender`s e-mail address and receiver`s e-mail account Name and Password.**

- **POP3 Server:** This is receiver`s mail server
- **From :** Sender`s email address . Ex.: aviosys@gmail.com
- **Port :** This is the port of POP3 Server.

If user select @gmail or @hotmail account as SMTP Server , 9858MT will fill the SSL & Port automatically.

- **User :** Username to login the receiver`s e-mail Ex.: aviosys1 or aviosys1@gmail.com
- **Password:** Password for the e-mail address. EX. : 12345678
- **Tag :** User can use any message for 9858MT to recognize this mail as 9858MT command mail .

EX.:

As type " Test " in TAG area, the command contents is as following:

IPPOWERCTRL:TAG=Test;POWER1=OFF;POWER2=OFF;POWER3=OFF;POWER4=OFF

- **Interval (minutes) :** The period of time between Send and Receive the command e-mail.
- **Mail Number :** For 9858MT to search as command mail in the number of your email receiver latest . EX. : setup 20 that 9858MT will check the latest 20pcs email in receivers mail box for the 9858MT command mail

- **CTRL format** : Control format by subject or by body (e-mail contents)

For example : Use Gmail as sender and receiver

- Sender's e-mail : 123@gmail.com
- Username to log in sender's @gmail : 123@gmail.com or abc@def.com
- Password to log in sender's @gmail : 12345678

Command format & Example :

User can get the e-mail command contents in the section . And execute an e-mail as press "Submit " if user has e-mail setting in the PC as following :



Command format :

IPPOWERCTRL:TAG=Test;POWER1=OFF;POWER2=OFF;POWER3=OFF;POWER4=OFF

There are 2 section of the command

1. IPPOWERCTRL:TAG=Test

This is command part. Beside the tag message part (like Test on above example) user can change in setting section , the other command must be **CAPITAL** and are fixed content .

2. ;POWER1=OFF;POWER2=OFF;POWER3=OFF;POWER4=OFF

This is to set the outlet number (POWER1=) and action (ON/OFF) , user can only control 1~4 port ON/OFF by e-mail. Do each outlet command

EX.: Put " 14ON" in tag section and place the command as following : (at subject or body depends one user's setting) :

IPPOWERCTRL:TAG=14ON;POWER1=OFF;POWER4=ON

E-mail example :

- Execute e-mail command by " Subject "

CTRL Format :

☒ Subject ☐ Body

Apply

Example:

E-Mail Test:

yourmail

Subject:

IPPOWERCTRL:TAG=Test;POWER1=OFF;POWER2=OFF;POWER3=OFF;POWER4=OFF

Body:

- Execute e-mail command by " Body "

CTRL Format :

☐ Subject ☒ Body

Apply

Example:

E-Mail Test:

yourmail

Subject:

Body:

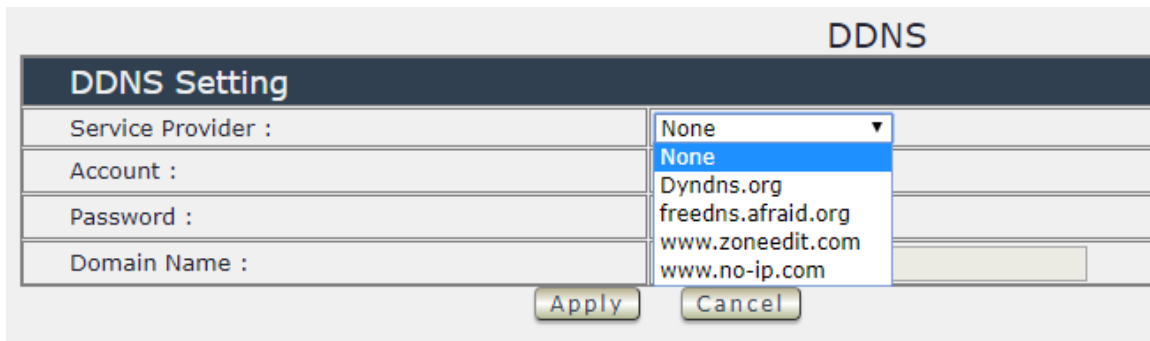
IPPOWERCTRL:TAG=Test;POWER1=OFF;POWER2=OFF;POWER3=OFF;POWER4=OFF

Submit

B. DDNS

The DDNS section allows user to setup the 9858MT with a DDNS server (i.e. www.dyndns.com). After the server has been setup correctly, enter the necessary information into the 9858MT DDNS settings.

Note : The DNS server will have extra change as apply new account.



The screenshot shows a web interface titled "DDNS" with a sub-header "DDNS Setting". Below this is a form with four input fields: "Service Provider :", "Account :", "Password :", and "Domain Name :". The "Service Provider" dropdown menu is open, showing a list of options: "None", "None", "DynDNS.org", "freedns.afraid.org", "www.zoneedit.com", and "www.no-ip.com". The "None" option is currently selected. Below the form are two buttons: "Apply" and "Cancel".

Account : the Username / account name of DDNS account

Password : the Password of DDNS account

Domain name : The DDNS name user apply . Ex.: abc.dyndns.org

C. Communication

9858MT supports SNMP, SSH/Telnet, Modbus TCP and BACnet TCP

Communication Setting:	
SNMP:	
Enable	<input type="checkbox"/>
Community Authority :	N/A ▼
Community Name :	private
Trap type :	N/A ▼
Host(192.168.1.1:162) :	192.168.1.1:162
Trap Community :	private
MIB file	IPPOWER-MIB.txt
Apply	
TELNET:	
Enable	<input checked="" type="checkbox"/>
Apply	
TCP Modbus	
Modbus Enable	<input type="checkbox"/>
Port	502
Apply	
BACnet <small>-Beta</small>	
Enable	<input type="checkbox"/>
Port	47808
Apply	

1. SNMP

This section is for development of system integrator who is familiar with SNMP knowledge. In community Authority , user can select “ Read only ” or “Read / Write”

SNMP:	
Enable	<input type="checkbox"/>
Community Authority :	N/A ▼
Community Name :	N/A
Trap type :	Read Only
	Read/Write
	N/A ▼
Host(192.168.1.1:162) :	192.168.1.1:162
Trap Community :	private
MIB file	IPPOWER-MIB.txt
Apply	

In “ Trap ” type ,user can select “ v1 trap “ , “ v2c trap “ or “ v2c inform”

SNMP:	
Enable	<input type="checkbox"/>
Community Authority :	N/A
Community Name :	private
Trap type :	N/A
Host(192.168.1.1:162) :	1:162
Trap Community :	
MIB file	IPPOWER-MIB.txt
<input type="button" value="Apply"/>	

In MIB file section , user can get MIB information.

2. SSH/Telnet

In This section is for development of system integrator who is familiar with SSH/Telnet to enable /disable the


TELNET:	
Enable	<input checked="" type="checkbox"/>
<input type="button" value="Apply"/>	

Please refer page 50 for SSH/Telnet contents .

3. Modbus TCP

A. **Modbus** : We supply 3 models of ModBus control

C-1 ModBUS TCP : Just Enable or disable this function

TCP Modbus	
Modbus Enable	<input checked="" type="checkbox"/> 
Server IP	1.34.50.123
Port	502
Baud Rate	38400
SlaveID	1
Parity	None
Modbus ID	<div>1. <input type="text"/> 2. <input type="text"/> 3. <input type="text"/> 4. <input type="text"/></div> <div>5. <input type="text"/> 6. <input type="text"/> 7. <input type="text"/> 8. <input type="text"/></div>
RTU Enable	<input type="checkbox"/>
<input type="button" value="Apply"/>	

C-2 Modbus Gate way model : Need to Enable Modbus , Enable RTU & fill Modbus ID .

C-3 Modbus RTU : Need to Enable Modbus , Enable RTU & fill Modbus ID .

TCP Modbus	
Modbus Enable	<input checked="" type="checkbox"/>
Server IP	1.34.50.123
Port	502
Baud Rate	38400 ▼
SlaveID	1
Parity	None ▼
Modbus ID	1. <input type="text"/> 2. <input type="text"/> 3. <input type="text"/> 4. <input type="text"/> 5. <input type="text"/> 6. <input type="text"/> 7. <input type="text"/> 8. <input type="text"/>
RTU Enable	<input checked="" type="checkbox"/>
<input type="button" value="Apply"/>	

4. BACnet TCP

In this section is for development of system integrator who is familiar with SSH/Telnet to enable / disable the function and to setup it's port .

BACnet -Beta	
Enable	<input type="checkbox"/>
Port	47808
<input type="button" value="Apply"/>	

D. IP SERVICE

In this section , user can setup

- IP Server & CNT (Cross Network Technology) ,
- CNT2 (MQTT)

IP Service & CNT Setting	
Enable	<input type="checkbox"/>
IP Service Server :	Server1 ▼
CNT Server List:	Server1 ▼
Device Name :	IP_POWER
Country :	Country
City :	City
Find IP_POWER device on http://www.mypedit.com	
Apply	

CNT2(MQTT)	
Enable	<input type="checkbox"/>
Server :	www.mypedit.com
Port :	1883
User :	ipuser
Password :
Apply	

5. IP Service & CNT Setting :

The IP SERVICE allow 9858MT to be accessed easily on the internet by our IP Power Center or IP EDIT. With this feature anyone can find its device with no problems.

IP Service Server: Allows user can find user of 9858MT on the internet without having to remember long IP Addresses. Instead user can just remember the name of user device.

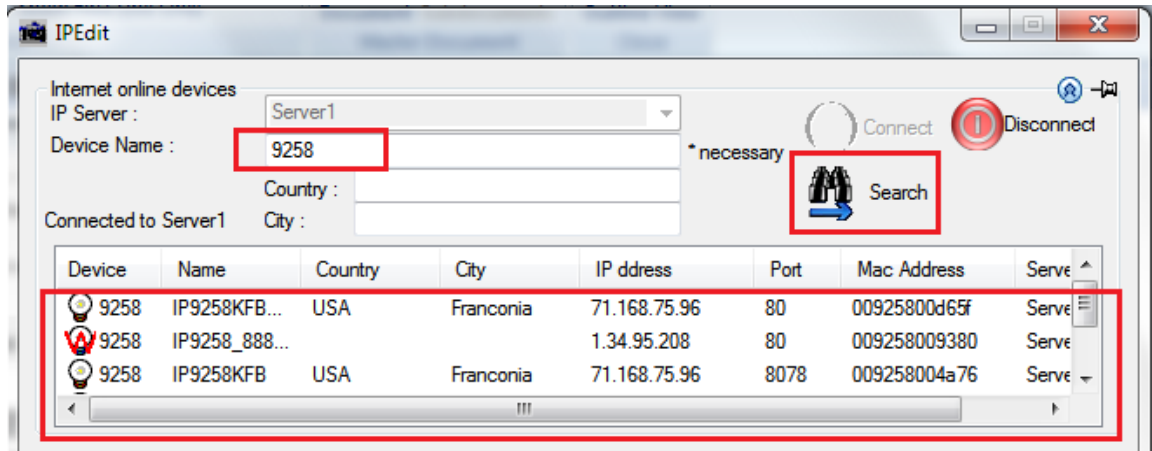
IP Service & CNT Setting	
Enable	<input type="checkbox"/>
IP Service Server :	Server1 ▼
CNT Server List:	Server1 ▼
Device Name :	IP_POWER
Country :	Country
City :	City
Find IP_POWER device on http://www.mypedit.com	
Apply	

- Enable : Enable or Disable this function by clicking the small box .
- IP Service Server & CNT Server List : For easily setting , please select same server number for the 2 servers.
- Device name , Country & City :

User can search the 9858MT by Device name , Country or City.

This allows the device to be accessed easily on the Internet, user no longer have to Port Forwarding , user device to be able to use it. Only some devices are CNT compatible.

Please refer page #14 for the function of IP Server

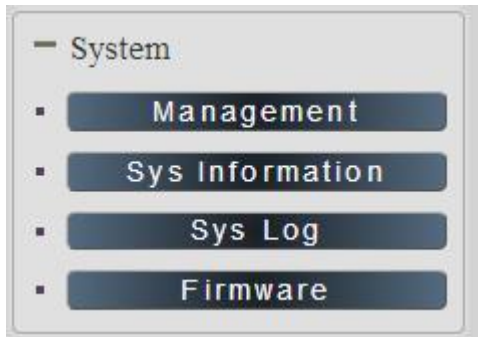


6. CNT2 (MQTT) –

For developing only. 9858MT supports MQTT fucniton. Please contact with your distributor for the details if you would like to develop own system.

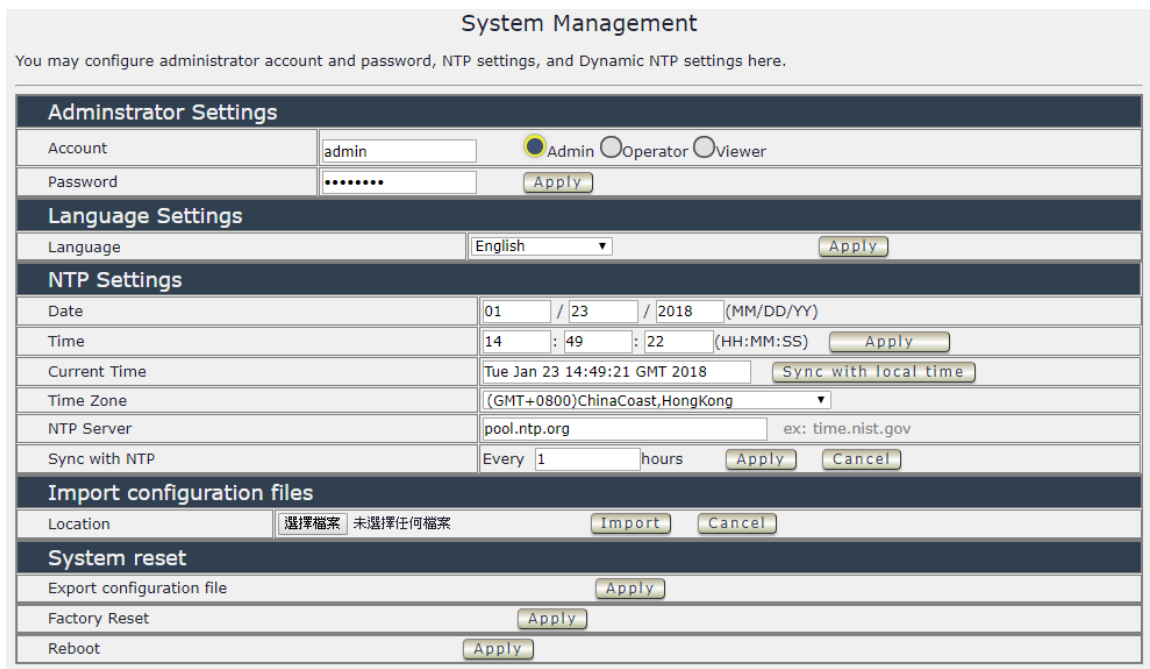
CNT2(MQTT)	
Enable	<input type="checkbox"/>
Server :	www.mypedit.com
Port :	1883
User :	ipuser
Password :
<button>Apply</button>	

System Setting :



1. Management

In this section there are 5 settings: Administrator setting, Language Settings , NTP settings , Import Configuration files and System Reset .

A screenshot of the 'System Management' configuration page. The page has a light gray header with the title 'System Management' and a subtitle 'You may configure administrator account and password, NTP settings, and Dynamic NTP settings here.' The main content area is divided into several sections, each with a dark blue header and a light gray body. The sections are: 'Administrator Settings' with fields for 'Account' (admin), 'Password' (masked), and radio buttons for 'Admin', 'Operator', and 'Viewer'; 'Language Settings' with a 'Language' dropdown set to 'English'; 'NTP Settings' with fields for 'Date' (01/23/2018), 'Time' (14:49:22), 'Current Time' (Tue Jan 23 14:49:21 GMT 2018), 'Time Zone' ((GMT+0800)ChinaCoast,HongKong), 'NTP Server' (pool.ntp.org), and 'Sync with NTP' (Every 1 hours); 'Import configuration files' with a 'Location' field and 'Import'/'Cancel' buttons; and 'System reset' with 'Export configuration file', 'Factory Reset', and 'Reboot' buttons, each with an 'Apply' button.

1-1 Administrator setting

In this section allows user to change password for 3 different authorization level . The account name and password can be changed , but each Authorities only support one Account name & one password.

Administrator: The *Administrator* has the authority to create other users, remove users, and control the device. 9858MT will ask to log in again if change the Default Setting here.

Operator : The operator can only control the setting of “ IO Control “ section but can not see other page of 9858MT .

Viewer: The viewer can only see the “ IO Control “ section , but can not see other page of 9858MT.

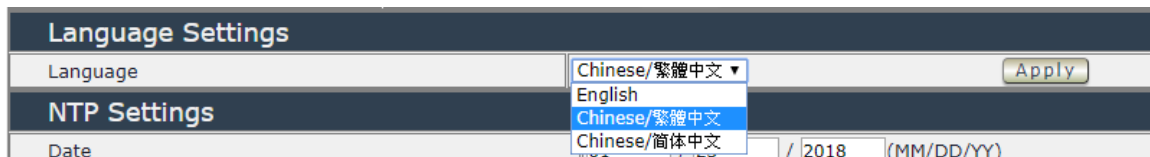
Default Setting of the Authorities :

Authority	Account name	Password
Admin	Admin	12345678
Operator	user	user
Viewer	guest	guest
Note	Please amend the password as number or English character from 1 to 8 characters. Do not use special symbol like “ ” ; : ~ ! @ # \$ % ^ & * ()	

Please click “Apply “ button after change the account name / password

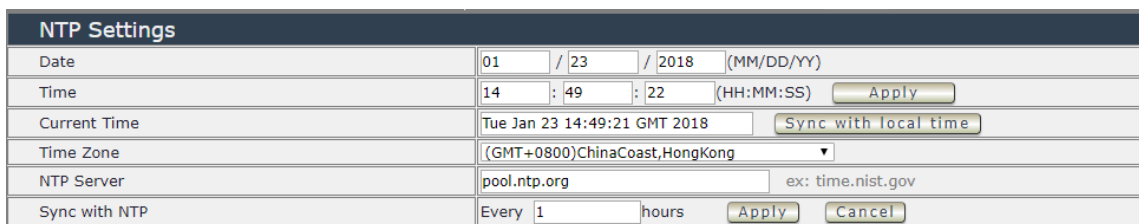
1- 2 Langrage Settings

There are 3 language option of 9858MT .The default language is English.
The other two languages are “Traditional Chinese “ and “ Simple Chinese “ .



1-3 NTP setting

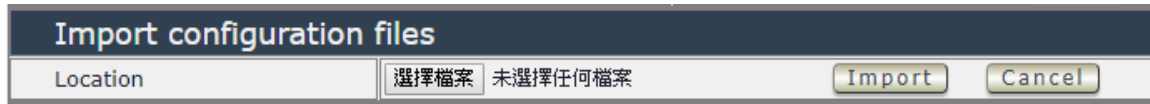
In this section , user can setup the date , time , current time , time zone , NTP server and sync with NTP to get the time synchronization .



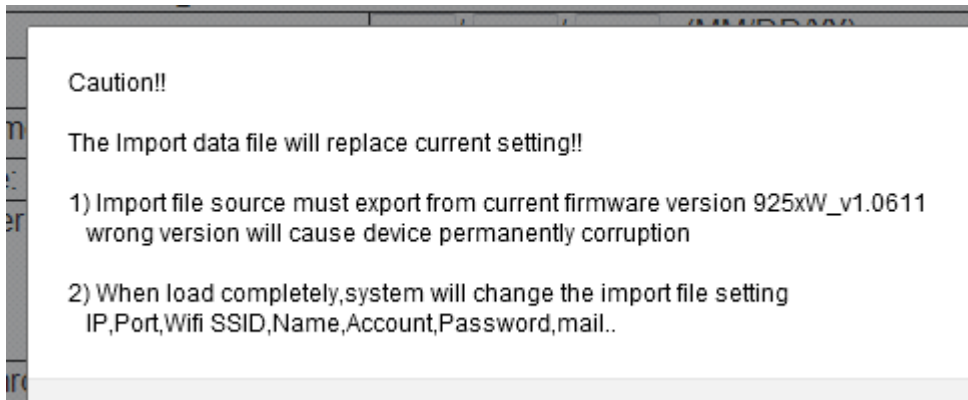
SYNC with NTP : User can setup the time gap (1~300 hours) for 9858MT to check the time with the NET server .

1-4 Import configuration files

To setup multiple with same setting , user can import the settings of other 9858MT from a “ DAT “ file which is exported form another 9858MT . By import this file to other 9858MT device and shorten the setup time .



As press “ Import “, there is caution message show as following :



Before click “ Ok “ to import , please do read following notice :

- Do NOT import DAT file which is not export form 9858MT. The warranty will be invalidated if any wrongdoing from “ Import “ .
- Please do Import the file in LAN / Ethernet . To avoid Import fail , please do not Import file via Internet

1-5 System reset

User can click one button to set back the setting to default or restart the 9858MT without device nearby user side.

Note : The factory default setting of 9858MT IP is assigned by DHCP. It will change the IP if load factory defaults .



- Export configuration file : Export the settings into DAT file for import to other 98520

- Factory Reset : set back to factory default .
- Reboot : 9858MT device power reboot

2.System Information

User can get the system information here .

System Information

System			
System Up Time	16 hours, 7 mins, 58 secs	MAC Address	00:76:50:00:00:FC
Firmware Version	v1.00_291	Hardware Version	(Jan 10 2018)
WAN			
WAN IP Address	0.0.0.0	Ethernet Port	80
Default Gateway	192.168.100.1	Internet Port	80
Primary DNS	127.0.0.1	Secondary DNS	168.95.1.1
LAN			
Connected Type		DHCP	
Local IP Address		192.168.100.137	
Local Netmask		255.255.255.0	
Other Information			
SNMP		Disable	
ModBusTCP		Disable	
BacnetIP		Disable	
Telnet		Enable	
UPNP		Disable	
IPSERVICE & CNT		Disable	
CNT2		Disable	

3.System Log

In this section , user can get the 9858MT system operation information and send the information to assign Server IP address (not support name) . **The system information will be deleted after 9858MT device power reboot.**

System Log

Syslog:

Syslog Server IP Address

Apply

Refresh

Clear

System Log:

```

Jan 23 18:16:04 IP_POWER syslog.info syslogd started: BusyBox v1.12.1
Jan 23 18:16:04 IP_POWER kern.notice kernel: klogd started: BusyBox v1.12.1 (2017-12-07 01:17:44
Jan 23 18:16:04 IP_POWER kern.alert kernel: [ 9.016000] PROC INIT OK!
Jan 23 18:16:04 IP_POWER kern.err kernel: [ 9.780000] gre: can't add protocol
Jan 23 18:16:04 IP_POWER kern.err kernel: [ 19.024000] ### raeth: can not open udhcpc_eth.pid

```

Please click the IP and save by click “Apply”

4.Firmware

The firmware update function only support in LAN connection .
Before update , please DO [READ](#) THE HI-LITE MESSAGE BLOW :

It takes about 1 minute to upload upgrade flash and be patient please. Caution! A corrupted image will hang up the system.

To update the 9858MT , please follow the instruction below to prevent anything happens like **update incomplete** or **hardware disable** which may be caused by wrongdoing of updating :

- 1) Turn off all chat programs including (Skype, FB, QQ, AIM, Yahoo messengeretc.)
- 2) Check to make sure that all devices are turned on safely and powered
- 3) While updating do not turn off the power
- 4) Make sure that the cable is connected firmly
- 5) Do not interrupt the update process, the update must be completely finished .
- 6) Turn off, any Spyware or antivirus software which may conflict with the update.
- 7) Update firmware in the Local Area Network (LAN)
- 8) Support update under 32bit Web Browser (32 bit version only) like IE, Google Chrome, .
Do not use browser at 64 bit version
- 9) Please change the PORT as 80
- 10) **Reboot and Do the Hardware Reset** (keep pressing RESET button for 10secs) after update successfully.
- 11) **Clear the Cookies from the temporary file of PC** to avoid get the old webpage .

Please also update the notice in webpage before update :

Upgrade Firmware

bbb Upgrade selected firmware to obtain new functionality.ccc **Caution! A corrupted image will hang up the system.**
ddd It takes about 1 minute to upload & upgrade flash and be patient please.

Firmware	
Location	<input type="button" value="選擇檔案"/> 未選擇任何檔案

Other ways to control

Besides webpage control ,there are several ways to control the outlets : by HTTPS/CGI command or by SSH/Telnet . 9858MT also support SNMP (MIB) , Modbus TCP/IP and BACnet /TCP .

Please check page #41 to check and enable the function .

1. CGI HTTP Commands

CGI Commands allow you to easily integrate the 9858MT with other systems and programs. Please read the instructions carefully on how to use the Http:// Commands

To use http:// Commands open up a web browser and type in the command that you would like to use.

1. User authorization .There are 3 formats :

For example : IP address 192.168.1.18 , Username : admin. Password : 12345678

1.1 <http://admin:12345678@192.168.1.18/set.cmd?cmd=getpower>

1.2 <http://192.168.1.18/set.cmd?user=admin+pass=12345678+cmd=getpower>

The above 2 way also for HTTPS

2. Command

set.cmd?cmd=

All command do not separate capital / lower case , the connect symbol between commands can be “+” , “&” and “?”.

2.1 To get firmware version : getversion

<http://192.168.1.18/set.cmd?cmd=getversion>

System return : CGI Command : Data follows
Version=9258W_N_v1.0.0.1

2.2 To get MACaddress: getmac

<http://192.168.1.18/set.cmd?cmd=getmac>

System return: CGI Command : Data follows
mac=00929000008F

2.3 To get the status of power on/ off: getpower

<http://192.168.1.18/set.cmd?cmd=getpower>

System return:

CGI Command : Data follows

p61=0, p62=0, p63=0, p64=0

P61 to P64 means : POWER1 to POWER4

2.4 To set the power on / off : setpower&p6x=0 or 1

p6x=0 means off, p6x=1means ON, x can be 1 to 4 (power1 to power 4)

Example : Turn on POWER1 and POWER2 and turn off POWER3:

<http://192.168.1.18/set.cmd?cmd=setpower&p61=1&p62=1&p63=0>

System return: CGI Command : Data follows
p61=1,p62=1,p63=0

2.5 Setup power to reboot as RESET: setpowercycle& p6x=delayTime
X can be 1 to 4 (power 1 to power 4) , ; dealyTime mean the time (second) waiting for reset

For example :

<http://192.168.1.18/set.cmd?cmd=setpowercycle> &p61=5&p62=2&p63=4

System return: CGI Command : Data follows
p61 cycle ok,p62 cycle ok,p63 cycle ok

2. SSH/Telnet Control

Please enable the SSH/Telnet function in “Application “ → “ Communication “

Or Check page #41 to check and enable the function .

TELNET:	
Enable	<input checked="" type="checkbox"/>
<input type="button" value="Apply"/>	

```
C:\ Telnet 192.168.1.18

IP login: admin
Password:
```

```
C:\ Telnet 192.168.1.18

#
# ioctl1 -h
**-----**
Usage: ioctl1
[-h ! --help 1.....: display this help
[-s ! --setpower p6=0011 or p6x=1(x=1,2,3,4)1.....: turn on/off ports on the d
evice
[-p ! --getpower 1...: get the on/off status of the device
[-c ! --current 1.....: get the current value of the device
[-t ! --temp 1.....: get the temperature value of the device
[-v ! --version 1.....: display version information
-----
# ioctl1 -s p6=1111
p61 ok,p62 ok,p63 ok,p64 ok.
# ioctl1 -c
Current value: 0.000000, 0.000000, 0.000000, 0.000000
# ioctl1 -t
Temperature value: 32.299999
# ioctl1 -v
IO CONTROL Version: 1.0
Compilation Date.....: May 14 2013
Compilation Time.....: 10:44:47
# ioctl1 -p
Power Status: 1, 1, 1, 1
#
```

Notice: The command “ -C “ & “ -T “ are for models 9858MT only .

FAQ :

Q1: Why can't I see the 9850XX IP address in IPEDIT.exe ?

Ans.:

Please check if your 9850XX had boot up successfully . There is a short beep sound to show 9828 boot up successfully after device power up for 45 second.

There are several possibilities for this issue as 9828 boot up successfully :

1. IP Segment of your PC :

Please check the PC you use is under same LAN/ network / segment as 9825 .

2. Firewall / Antivirus protection :

Please turn off some Anti-Virus / online chatting software .

3. Network card :

IPEDIT can only work for the PC with one network card . If there are more than 1 network card , include dynamic network card , please disable one and make sure the one you selected is Under the same segment with IP9825.

4. Connection sequence

9828 will stay DHCP mode – keep waiting for your router to assign the IP (DHCP) - if you connect the 9828 to PC directly and connect to network cable before the power of 9828 device turn on .

If connect to PC directly , please wait for the boot up beep first and THEN connect the network cable to your PC . And the IP should be fixed at 192.168.100.169

Notice : This is very important for this procedure . Please do not plug the network cable to 9850first under this connection . (without Router assigned the IP to 9850)

Q2 : Why can't I receive e-mail ?

Ans.: Please check the DNS and GATEWAY setting first (Check user router or ask user ISP company) .There is a test button for checking the setting success or fail to send e-mail.

Q3: How can I reset to default:

Ans : Keep pressing the button of "RESET for 5 seconds at least

To reset to original manufacture settings : press the reset button with a sharpen pin for 5- 6 seconds then RELEASE. There will be 3 beeps sound which means reset start and

9825 will be rebooted itself -there is one beep after reboot) and most information go back to default setting (LAN IP).