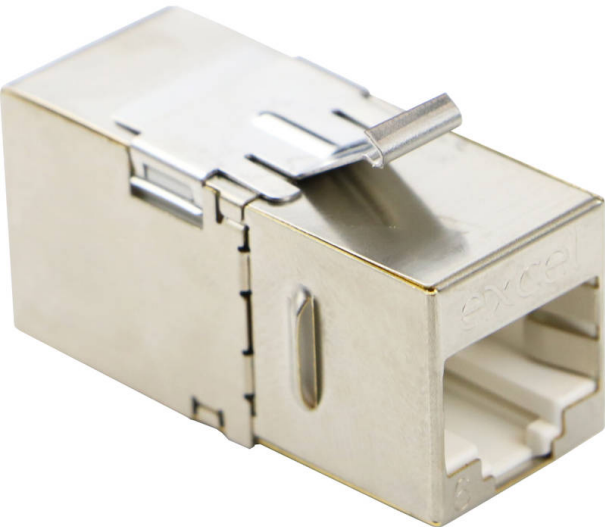


Excel Cat6 (FTP) 180 Degree Keystone Through Coupler

Item Code: 100-106



- Standard Keystone fitting
- Category 6 FTP
- 180 degree configuration
- Suitable for both screened and unscreened systems
- Standard RJ45 connection both ends
- Maintains channel performance

Product Overview

Excel range of Category 6 Through Couplers provides RJ45 in/out connections, allowing channels to be extended where required. Standard Keystone Jack profile, so fits all Keystone panels and outlets.

Product Specifications

Feature	Values
Construction type	Straight
Type of connector	2x RJ45
Shielded	yes
Category	6
Model	Jack/Jack
Type of fastening	Engage (snap)

Excel Cat6 (FTP) 180 Degree Keystone Through Coupler

Item Code: 100-106



Standards

Applicable standard	Detail
ISO/IEC 11801-1:2017	Information technology - Generic cabling for customer premises: Part 1 General Requirements
EN 50173-1:2018	Information technology. Generic cabling systems - General requirements
RoHS-II/-III (2011/65/EU & 2015/863): 2023	Our products, demonstrate full adherence to the regulatory stipulations of the EU Directive 2011/65/EU (RoHS-II) and its corresponding delegated directive 2015/863 (RoHS-III).
WFD: 2023	Compliant to Waste Framework Directive
SCIP: 2023	Compliant - Does Not Contain Substances of Concern In articles as such or in complex objects (Products)
POPs (EU) No 2019/1021	EU Regulation for the restriction of Persistent Organic Pollutants.

Part Number Table

Part Number	Description
100-106	Excel Cat6 (FTP) 180 Degree Keystone Through Coupler
100-107	Excel Cat6A (FTP) 180 Degree Keystone Through Coupler
100-108	Excel Cat6 (FTP) 90 Degree Keystone Through Coupler
100-109	Excel Cat6A (FTP) 90 Degree Keystone Through Coupler

Excel is a world class premium performing end to end infrastructure solution designed, Manufactured, supported and delivered without compromise.

Contact us at sales@excel-networking.com



E&OE. Excel is a registered trade name of Mayflex Holdings Ltd.